

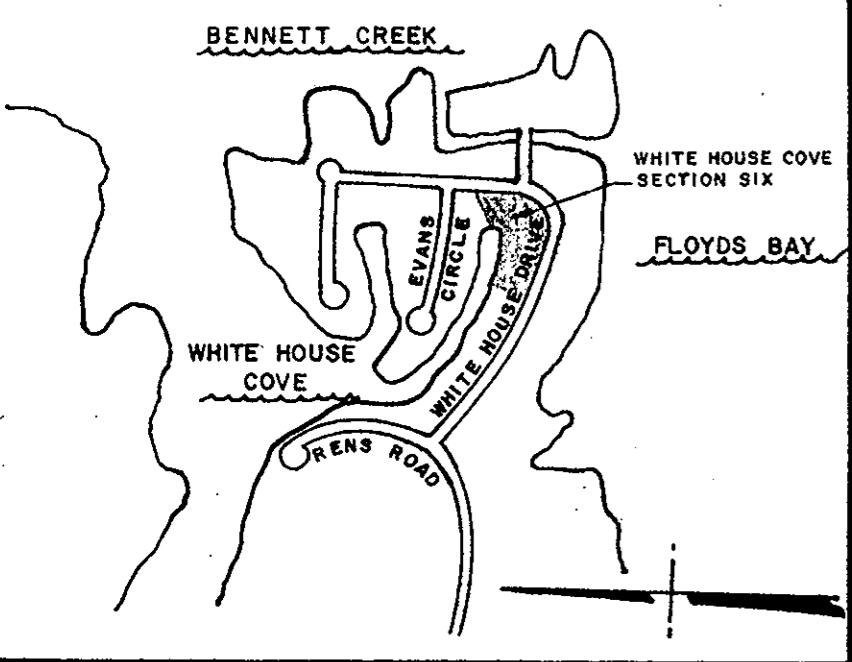
SUBDIVISION PLAT
WHITE HOUSE COVE SECTION SIX
 PENINSULA LAND CORPORATION, OWNERS AND DEVELOPERS
 BEING LOCATED NEAR RENS ROAD
 TOWN OF POQUOSON
 YORK COUNTY, VIRGINIA

SCALE: 1" = 100' DECEMBER 3, 1976

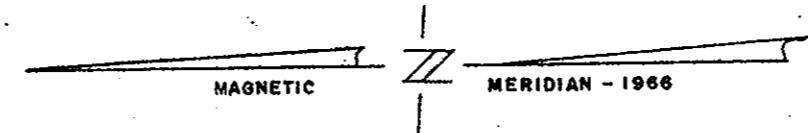
S.J. GLASS & ASSOCIATES
 ENGINEERING SERVICES - HAMPTON, VIRGINIA

APPROVED FOR THE TOWN OF POQUOSON:

George W. ...
 TOWN MANAGER DATE



VICINITY MAP
 SCALE: 1" = 1000'



TITLE TO THE LAND BEING SUBDIVIDED AS SHOWN HEREON IS VESTED IN PENINSULA LAND CORPORATION BY DEED FROM MARLIN AND LEAH W. MURPHY, DATED APRIL 18, 1966, D.B. 195, PG. 57; AND FROM W.G. AND IVA W. EVANS ET ALS, DATED APRIL 18, 1966, D.B. 203, PG. 383; RECORDED IN THE CLERK'S OFFICE OF THE CIRCUIT COURT OF YORK COUNTY, VIRGINIA.

THIS PLAT OF SUBDIVISION, INCLUDING DEDICATION OF STREETS AND EASEMENTS AS SHOWN ON THIS PLAT, IS WITH THE FREE CONSENT AND IN ACCORDANCE WITH THE DESIRES AND WISHES OF THE UNDERSIGNED OWNERS.

PENINSULA LAND CORPORATION

BY: *S.K. Graham*
 PRESIDENT

ATTEST: *John B. Graham*
 SECRETARY

STATE OF VIRGINIA
 City of Hampton
 I, Mattie J. Ford A NOTARY PUBLIC IN
 AND FOR THE City AND STATE AFORESAID, DO HEREBY
 CERTIFY THAT S.K. Graham and John B. Graham
B. Graham

WHOSE NAMES ARE SIGNED TO THE FOREGOING WRITING, HAVE ACKNOWLEDGED THE SAME BEFORE ME IN MY City AND STATE AFORESAID.

GIVEN UNDER MY HAND THIS 17th DAY OF December, 1976.
Mattie J. Ford
 NOTARY PUBLIC

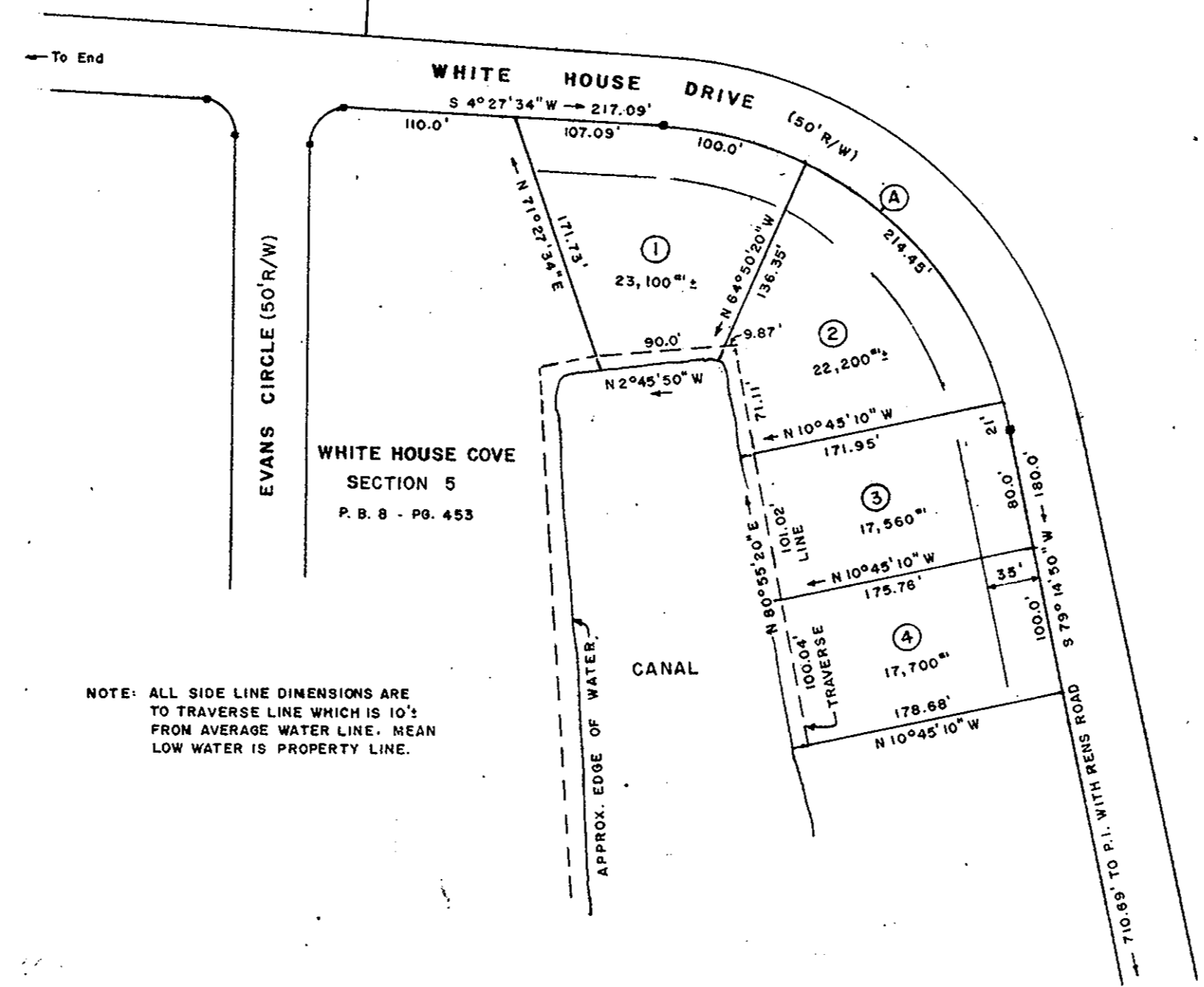
MY COMMISSION EXPIRES ON THE 5th DAY OF May, 1980.

Plat Book No. 9 Page 131

STATE OF VIRGINIA
 COUNTY OF YORK, TO WIT:
 IN THE CLERK'S OFFICE OF THE CIRCUIT COURT FOR THE COUNTY OF YORK THIS 17th DAY OF February, 1977.
 THIS MAP WAS PRESENTED AND ADMITTED TO RECORD AS THE LAW DIRECTS IN PLAT BOOK 9 PAGE 131.

TESTE: *Edith M. Elliott*
 CLERK

BY: *Catherine ...*
 DEPUTY CLERK



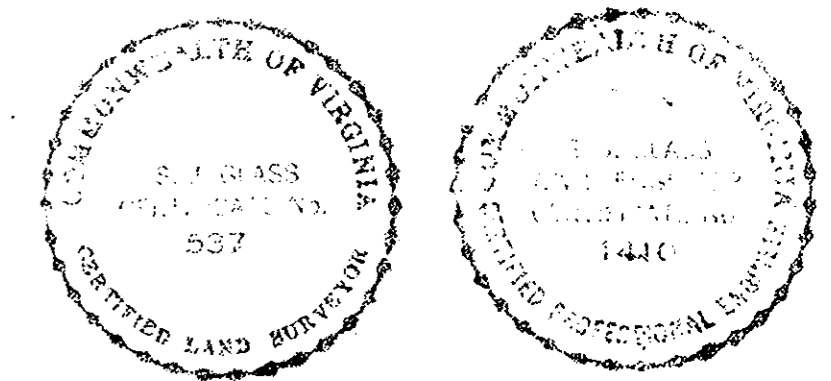
NOTE: ALL SIDE LINE DIMENSIONS ARE TO TRAVERSE LINE WHICH IS 10' FROM AVERAGE WATER LINE. MEAN LOW WATER IS PROPERTY LINE.

CURVE DATA: (A)

DELTA	74°47'16"
RADIUS	257.0'
TANGENT	196.44'
ARC	335.45'
CHORD	312.15'
CHORD BEARING	S 41°51'12" W

REMAINING PROPERTY OF PENINSULA LAND CORPORATION

AREA DEVELOPED IN SUBDIVISION LOTS 1.85 ACRES



TO THE BEST OF MY KNOWLEDGE AND BELIEF ALL OF THE REQUIREMENTS OF THE ORDINANCE FOR APPROVAL OF PLATS OF SUBDIVISION FOR RECORDATION IN THE TOWN OF POQUOSON, VIRGINIA HAVE BEEN COMPLIED WITH.

HAMPTON, VIRGINIA *S. Johnston Glass*
 CIVIL ENGINEER & SURVEYOR

DATE: DECEMBER 3, 1976.