

Plat Book No. 9 Page 163

Filed in the Clerk's Office, Circuit Court, York Co., Va.
the 15th day of July 1977

Teste:
Edith M. Elliott, Clerk
Nancy B. Kane D. C.

REFERENCES: D.B. 200, PG. 525
D.B. 200, PG. 522
D.B. 74, PG. 553
D.B. 93, PG. 96

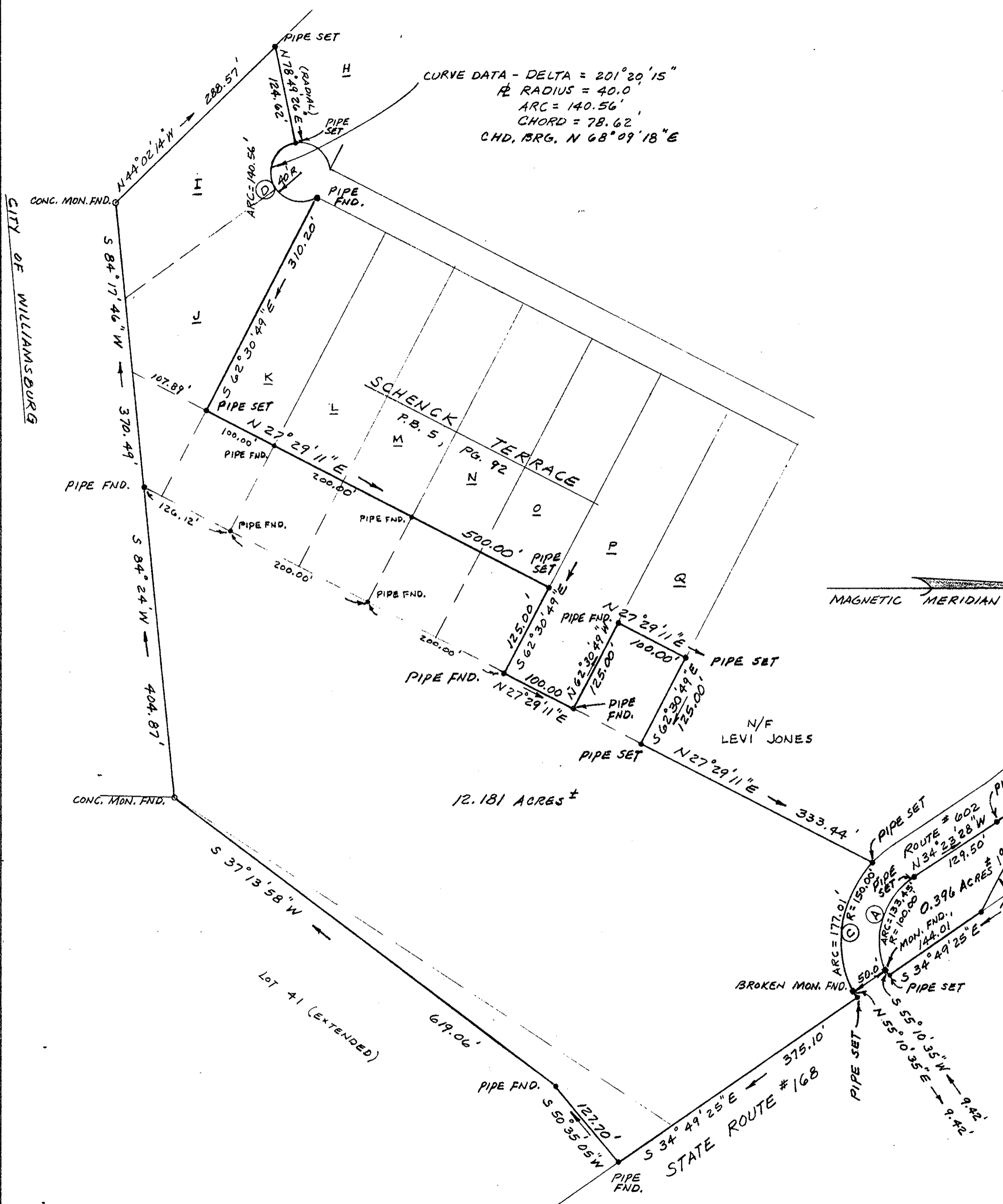
CURVE DATA - DELTA = 201°20'15"
R RADIUS = 40.0
ARC = 140.56'
CHORD = 78.62'
CHD. BRG. N 68°09'18" E

MAGNETIC MERIDIAN - 1977

(B) CURVE DATA - DELTA = 07°05'48"
R RADIUS = 706.87'
ARC = 87.55'
CHORD = 87.50'
CHD. BRG. N 37°56'21" W

(A) CURVE DATA - DELTA = 76°27'43"
R RADIUS = 100.00'
ARC = 133.45'
CHORD = 123.77'
CHD. BRG. N 72°37'25" W

(C) CURVE DATA - DELTA = 67°36'47"
R RADIUS = 150.00'
ARC = 177.01'
CHORD = 166.92'
CHD. BRG. S 81°45'15" E



SUBJECT TO EASEMENTS, RIGHT OF WAYS
AND COVENANTS OF RECORD.

ANDREW BECOUVARAKIS
Cert. No. 998
CERTIFIED LAND SURVEYOR

PLAT OF THE PROPERTY OF
ROBERT J. & BLANCHE CROWELL
LOCATED ON STATE ROUTE #168
YORK COUNTY, VA.

ANDREW BECOUVARAKIS - CERTIFIED LAND SURVEYOR
HAMPTON, VIRGINIA

SCALE: 1" = 100' JUNE 22, 1977