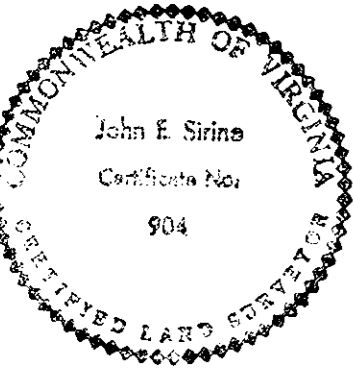


R=2894.75'
 Δ=00°47'-50"
 T=20.14'
 C=40.28'
 A=40.28'

10' Restrictive easement for the purpose of prohibiting access hereby granted to York County.

LAKESIDE DRIVE
 (STATE ROUTE 620)



Signed: John E. Sirine
 John E. Sirine

I, John E. Sirine, a Certified Land Surveyor, do hereby certify that this plat was prepared by me, the undersigned, at direction of the owner and that this subdivision is in accordance with the boundaries of land covered by deed dated August 9, 1974, and duly recorded in the Clerk's Office of the Circuit Court of York County, Virginia, in Deed Book 2, Page 334, and that concrete monuments as specified by the subdivision regulations of York County, Virginia, are actually in place at points marked thus "o", and that their locations are correctly shown.

This Subdivision of Property for HERBERT V. KELLY, TRUSTEE UNDER THE LAND TRUST, located in York County, Virginia, as appears on this plat, is with the consent and in accordance with the desires of the undersigned owner.

Signed and sealed this 20th day of July, 1978.

Signed: Herbert V. Kelly
 Herbert V. Kelly, Trustee

Notary Public for the State of Virginia; I, Margaret W. Bridges, to wit: Margaret W. Bridges, a Notary Public, in and for the City and County of York County, do hereby certify that Herbert V. Kelly, Trustee, whose name is signed on the foregoing writing bearing date the 20th day of July, 1978, acknowledged the same before me in my City and State aforesaid.

Given under my hand this 20th day of July, 1978.

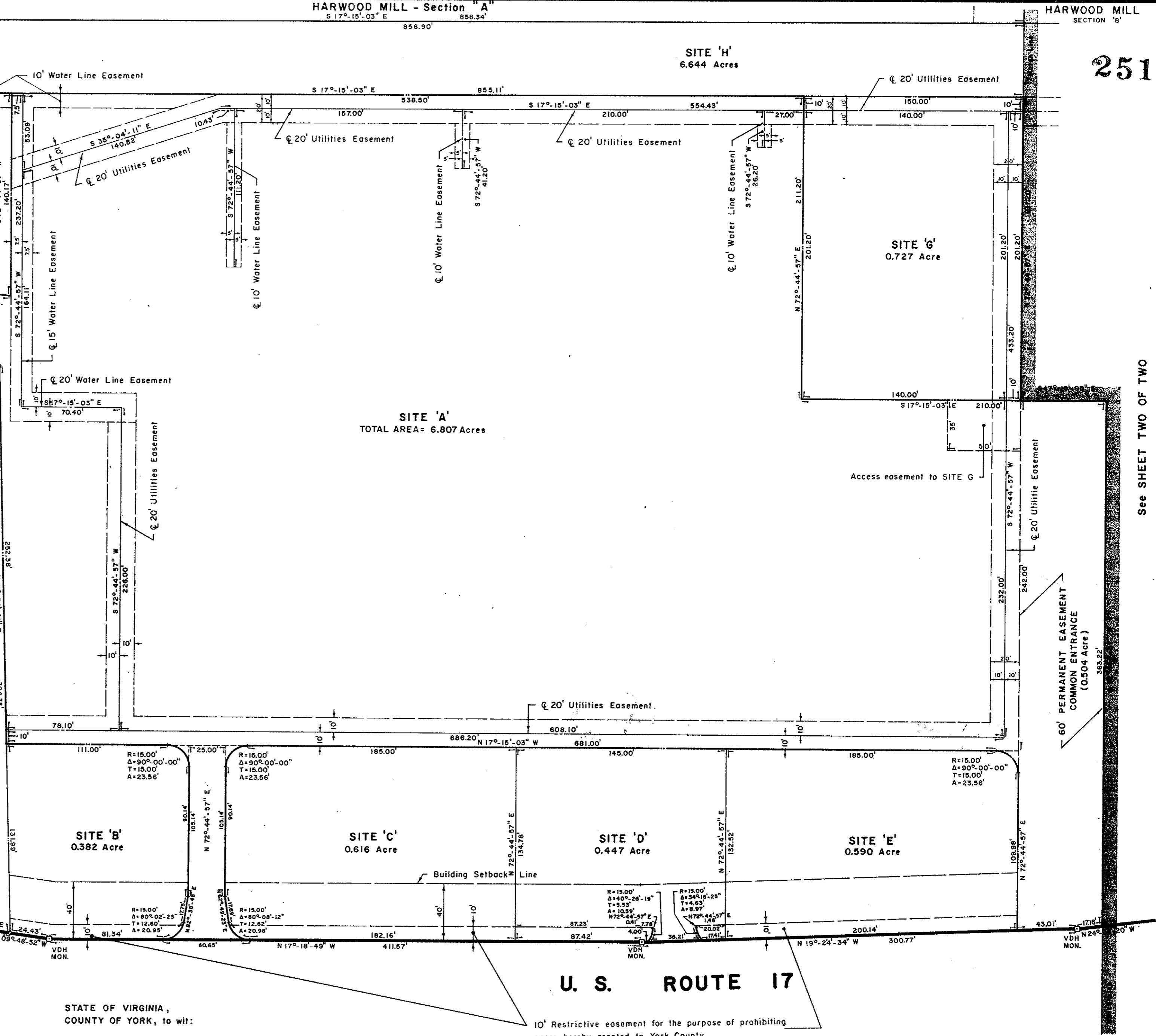
Margaret W. Bridges
 Notary Public

Commission expires: Jan 4, 1982

The undersigned certify that the subdivision as it appears on this plat conforms to the applicable regulations relating to the subdivision of land and is accordingly approved. By such approval, the undersigned do not certify as to the correctness of the plat, dary, street, or other lines shown on this plat.

Approved: R. E. Sirine Date: Aug. 3, 1978
 PLAT APPROVING AGENT, BOARD OF SUPERVISORS, YORK COUNTY, VIRGINIA.

Now or formerly GEORGE L. SMITH



STATE OF VIRGINIA,
 COUNTY OF YORK, to wit:

In the Clerk's Office of the Circuit Court of York County, Virginia, this plat was presented and admitted to record this 4th day of August, 1978, in Plat Book 9, Page 251, as the law directs.

Teste: EDITH M. ELLIOTT, CLERK
Barbara Benge
 Plat Book No. 9 Page 251

NOTE: Utility easements shown hereon are hereby dedicated to York County, Virginia for the installation and/or maintenance of utilities and drainage facilities, but reserving to the owner the rights of paving, parking, and transportation over, upon and across the same. The Total Area Encompassed With This Subdivision of Property = 17.194 Acres.

10' Restrictive easement for the purpose of prohibiting access hereby granted to York County.

SHEET ONE OF TWO

SUBDIVISION OF PROPERTY

FOR HERBERT V. KELLY, TRUSTEE UNDER THE LAND TRUST

YORK COUNTY - VIRGINIA
 Scale: 1" = 50' December, 1977
 JOHN E. SIRINE AND ASSOCIATES, LTD.
 SURVEYORS AND ENGINEERS
 VIRGINIA BEACH, VIRGINIA

Revised: July 18, 1978.
 Revised: June 2, 1978.
 Revised: April 4, 1978.
 Revised: January 20, 1978.
 Revised: December 5, 1977.
 Revised: November 11, 1977.
 Revised: November 9, 1977.
 Revised: October 28, 1977.

