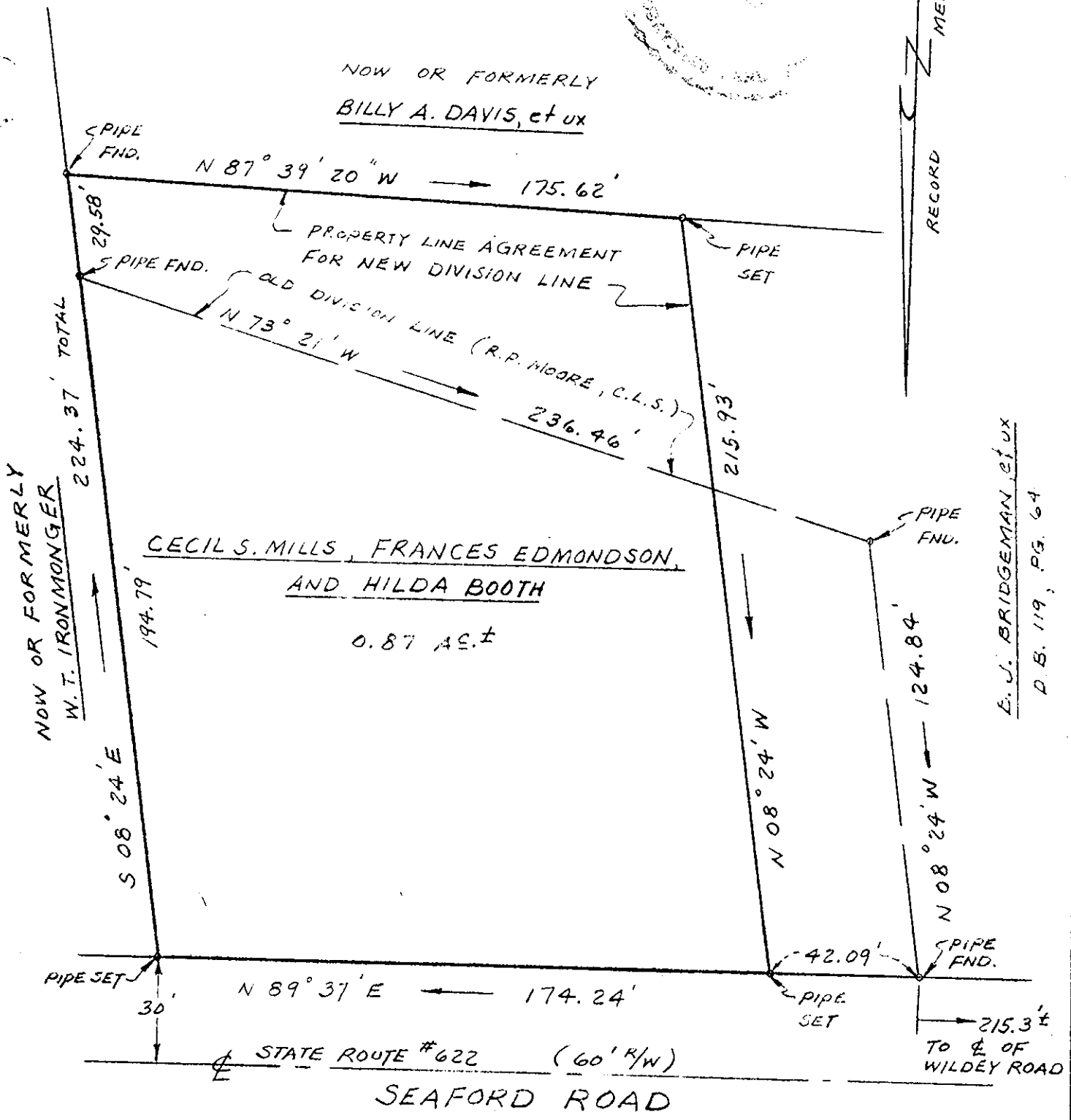
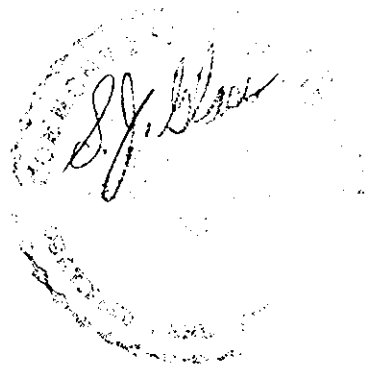


Filed in the Clerk's Office, Circuit Court, York Co., Va.
the 16th day of May 1979

Teste:

Edith M. Elliott, Clerk

T. H. Borden D.C.



WE, THE UNDERSIGNED LANDOWNERS, IN AGREEMENT, DO HEREBY CERTIFY THAT WE HAVE EXAMINED THIS PLAT AND ARE SATISFIED THAT THE SAME IS TRUE AND CORRECT, AND DO HEREBY ADOPT AND ACCEPT ALL OF THE BOUNDARY LINES SHOWN HEREON

Billy Joe Bridgeman
Glen Jr. Bridgeman
Frances Edmondson
Hilda Booth
Cecil S. Mills

REFERENCES: D.B. 91, PG. 252
P.B. 7, PG. 197

PLAT SHOWING PROPERTY OF CECIL S. MILLS, FRANCES EDMONDSON, AND HILDA BOOTH	
BEING LOCATED ON STATE ROUTE #622 (SEAFORD ROAD) SEAFORD, YORK COUNTY, VIRGINIA SCALE: 1" = 40' DECEMBER 19, 1972	
S. J. GLASS & ASSOCIATES ENGINEERING SERVICES - - HAMPTON, VIRGINIA	
P. F. NO. A-B-279	FIELD WORK BY: W. U. J. W.