

RECORD MERIDIAN - D.B. 39A, Pg. 180  
 N  
 RECORD MERIDIAN - D.B. 39A, Pg. 180

N/F  
 EMANUEL, INC.  
 D.B. 317, Pg. 689

N/F  
 TWO J'S, INC.

N/F  
 RICHARD C. WHITE

N/F  
 HARRIS

N/F  
 BOARD OF AMERICAN  
 MISSIONS  
 D.B. 228, Pg. 625

N/F  
 JOHN C. MOORE  
 ESTATE

N/F  
 C.S. MOORE

N/F  
 JOHN C. MOORE  
 ESTATE

N/F  
 GRAY  
 D.B. 124/555

N/F  
 AMERICAN OIL CO.  
 P.B. 8, Pg. 434

N/F  
 CARTER HARRISON  
 D.B. 54, Pg. 250

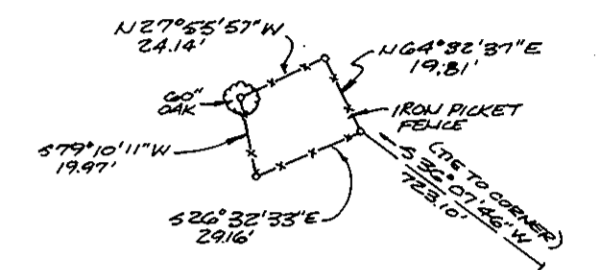
N/F  
 ORPAH COOPER

VDHT PROJECT NO.  
 0173-099-006, R/W (RT 173)  
 REVISED 8/25/58

VDHT PROJECT # 1399.03,  
 SHEET 3 (RT. 622)  
 REVISED 5/18/54

PIPE SET AT  
 INTERSECTION OF  
 OLD FENCES

NOTE: LINES ARE AS DESCRIBED AND  
 OCCUPIED BY MRS. F.W. GRAY



CEMETERY DETAIL  
 1"=50'

**AREA = 103.81 ACRES ±**  
 AREA TO BE ACQUIRED BY COUNTY  
 OF YORK = 94.42 AC. ±  
 (PART OF TOTAL 103.81 AC. ±)

**9.39 AC. ±**  
 (PART OF TOTAL 103.81 AC. ±)

$\Delta = 19^{\circ}18'38''$   
 $R = 994.93'$   
 $L = 335.33'$   
 $T = 169.27'$   
 $C = 333.74'$   
 $CB = 550^{\circ}44'18''W$

**TOTAL**  
 $\Delta = 14^{\circ}37'48''$   
 $R = 1392.39'$   
 $L = 355.54'$   
 $T = 178.74'$   
 $C = 354.57'$   
 $CB = 553^{\circ}04'43''W$

$\Delta = 07^{\circ}25'44''$   
 $R = 1392.39'$   
 $L = 180.53'$   
 $T = 90.39'$   
 $C = 180.41'$   
 $CB = 556^{\circ}40'50''W$

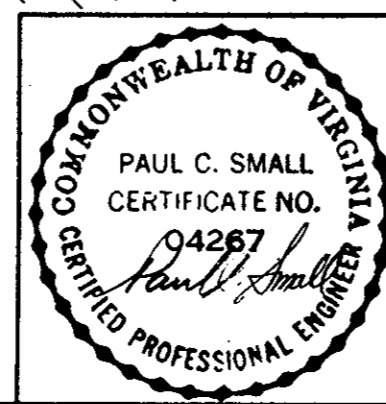
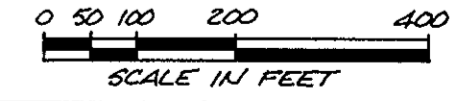
$\Delta = 07^{\circ}12'04''$   
 $R = 1392.39'$   
 $L = 175.00'$   
 $T = 87.62'$   
 $C = 174.89'$   
 $CB = 549^{\circ}21'57''W$

**REFERENCES**

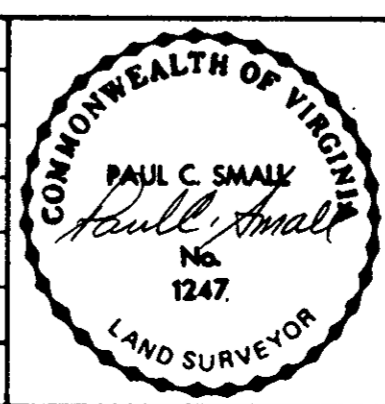
- 3 PLATS IN POSSESSION OF JOHN S. GRAY:
1. "A MAP OF A TRACT OF LAND COMMONLY KNOWN AS BELL'S ADJOINING, SURVEYED 19 JULY, 1825, AND DIVIDED BETWEEN JAMES H. CHAPMAN AND MARY ELIZABETH GRAY, BY C. HUBBARD, SURVEYOR FOR ELIZABETH CITY COUNTY" WITH FIELD NOTES ATTACHED.
  2. COPY OF NO. 1, ABOVE DATED OCTOBER 30, 1953, SIGNED BY "C. A. S."
  3. SURVEY OF LINE AGREEMENT ON WEST BOUNDARY BY JOSEPH M. HATCHETT, C.E., AND GIRARD CHAMBERS, C.E., DATED SEPTEMBER 28, 1929.
- ALSO  
 W. B. 33, Pg. 81

Filed in the Clerk's Office, Circuit Court, York Co., Va.  
 the 25th day of Feb. 1981

Teste:  
 Edith M. Elliott, Clerk  
*Edith M. Elliott*



No.	DATE	REVISION/COMMENT/NOTE	BY
3	9/11/80	REVISED NORTH LINE 9.39 AC. PARCEL	E.E.Z.
2	8/13/80	REVISED FOR PARTIAL TAKING	E.E.Z.
1	4/17/80	ADDED CEMETERY	R.C.S.



**SURVEY OF 103.81 ACRES  
 OF THE PROPERTY OF  
 MRS. FRANKIE WOODY GRAY, ET ALS**

NELSON DISTRICT, YORK COUNTY, VIRGINIA

**Small Engineering, Inc.**  
 Engineers, Planners, Surveyors  
 625 Ironbound Road 804 253-0040  
 WILLIAMSBURG, VA 23185

Scale: 1" = 200'  
 Date: NOVEMBER, 1979  
 Job: Y07