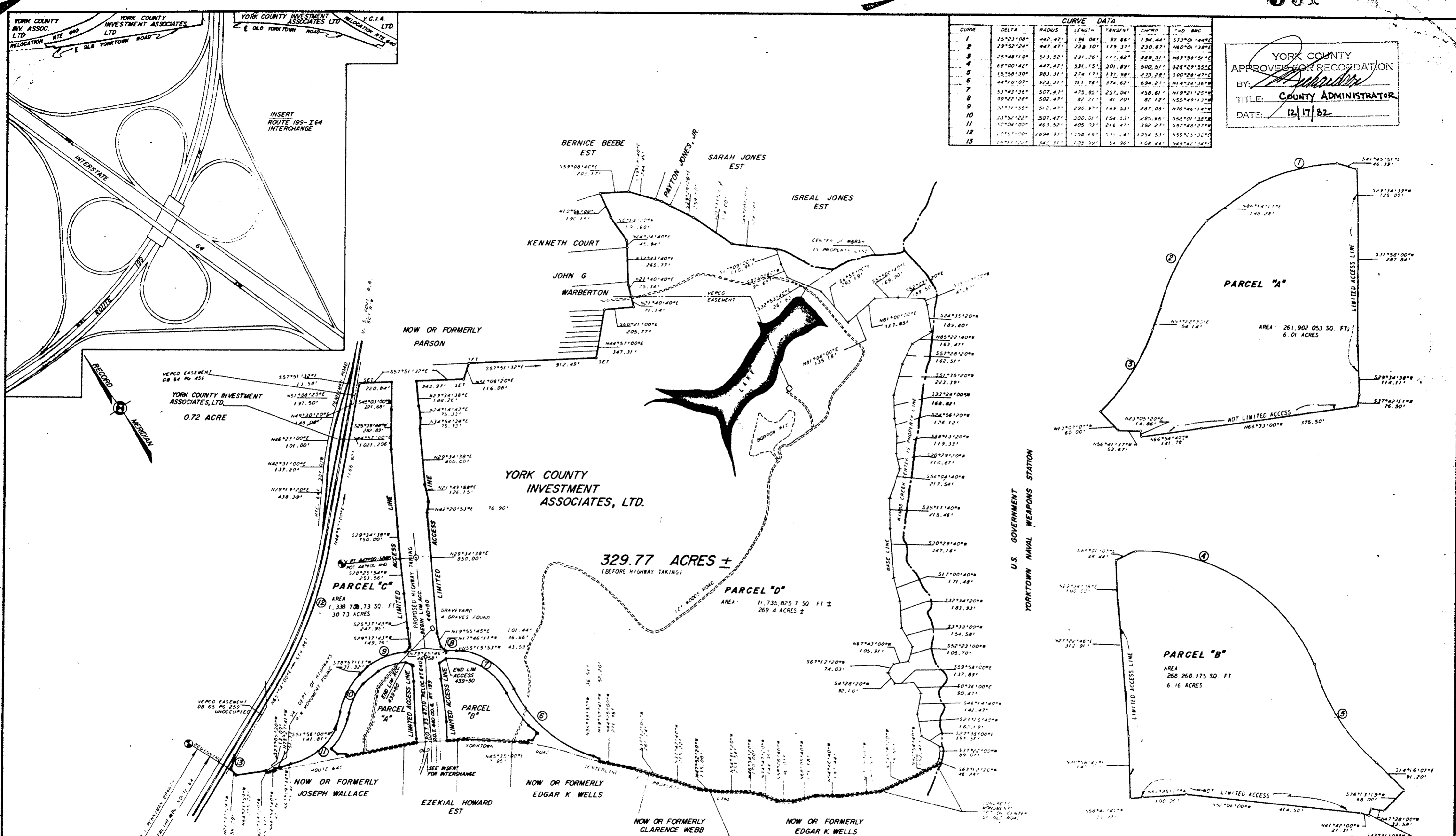


CURVE	DELTA	RADIUS	LENGTH	TANGENT	CHORD	CHD BNG
1	25°22'08"	196.04'	99.86'	194.44'	573°01'44"	573°01'44"
2	29°52'24"	447.47'	238.50'	119.37'	230.67'	260°01'38"
3	25°48'10"	513.52'	231.26'	117.62'	228.31'	263°58'50"
4	68°00'42"	447.47'	531.15'	301.89'	502.51'	326°29'55"
5	15°58'30"	983.31'	274.17'	132.98'	233.28'	500°28'47"
6	44°10'07"	923.31'	711.76'	374.62'	694.27'	214°34'36"
7	52°42'36"	507.47'	475.85'	257.04'	458.61'	219°21'25"
8	09°22'28"	502.47'	82.21'	41.20'	82.12'	255°49'13"
9	32°31'55"	512.47'	290.97'	149.53'	287.08'	276°46'14"
10	33°52'22"	507.47'	300.01'	154.32'	295.86'	292°01'38"
11	10°04'00"	463.52'	405.03'	216.47'	392.27'	287°48'27"
12	10°15'10"	2894.91'	1058.69'	515.44'	1054.53'	255°25'30"
13	12°11'22"	345.31'	105.39'	54.96'	108.44'	242°42'14"

YORK COUNTY
APPROVED FOR RECORDATION
BY: *[Signature]*
TITLE: COUNTY ADMINISTRATOR
DATE: 12/17/82



Filed in the Clerk's Office, Circuit Court, York Co., Va.
the 17th day of December 1982

Teste:
Edith M. Elliott, Clerk
[Signature] D. C.

Plat Book No. 9 Page 531

IRON PIPES SHOWN AS —
CONCRETE MONUMENTS NOTED

L. V. WOODSON & ASSOCIATES INC.
ENGINEERS, SURVEYORS & PLANNERS
P. O. BOX 633 WILLIAMSBURG, VIRGINIA 23185

PROPERTY OF YORK COUNTY INVESTMENT ASSOCIATES, LTD., LYING IN BRUTON DIST., YORK COUNTY, VIRGINIA

SCALE: 1" = 300'
DATE: AUG 17, 1970
REV. JULY 26, 1978
REV. JAN. 25, 1979

