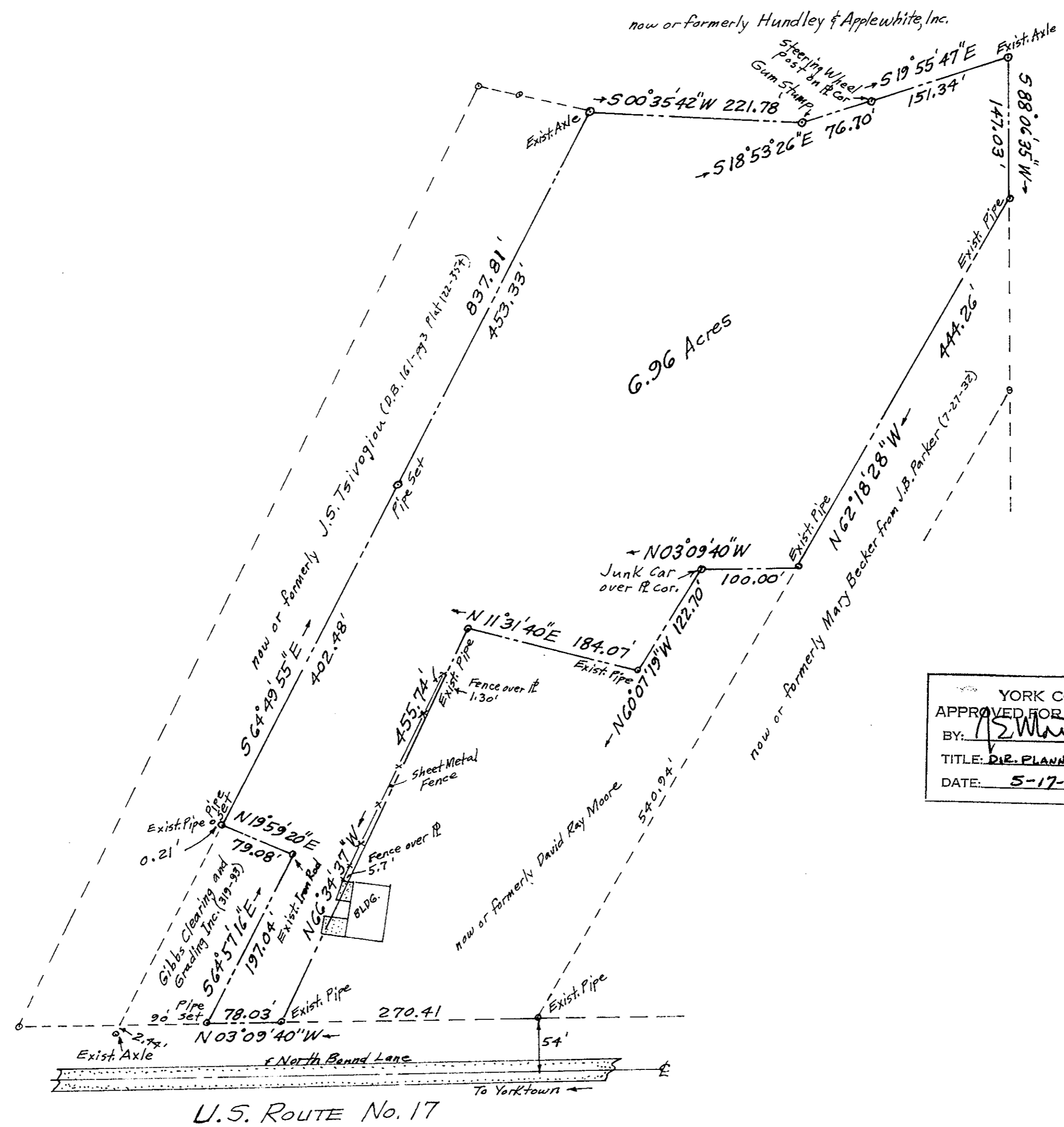
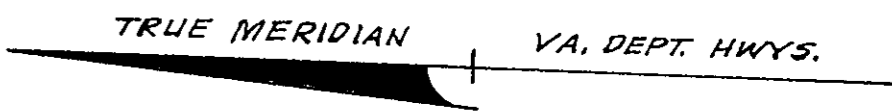


Vicinity Sketch
1" = 2,000'



now or formerly Hundley & Applewhite, Inc.



NOTE:
The Bearings shown on this map are from STATE HWY. PLAT Book #1-Pg 5, not the many Magnetic Bearings shown on recorded plats before the highway widening.

YORK COUNTY
APPROVED FOR RECORDATION
BY: *[Signature]*
TITLE: D.R. PLANNING & COMMUNITY DEVELOPMENT
DATE: 5-17-83



Plat Of
YVONNE S. KELLY ESTATE
York County, Virginia

John W. Lawson
John W. Lawson: Cert. Land Surveyor
scale: 1"=100'
April 22, 1982

Filed in the Clerk's Office, Circuit Court, York Co., Va.
the 23rd day of May 1983
Teste:
Edith M. Elliott, Clerk