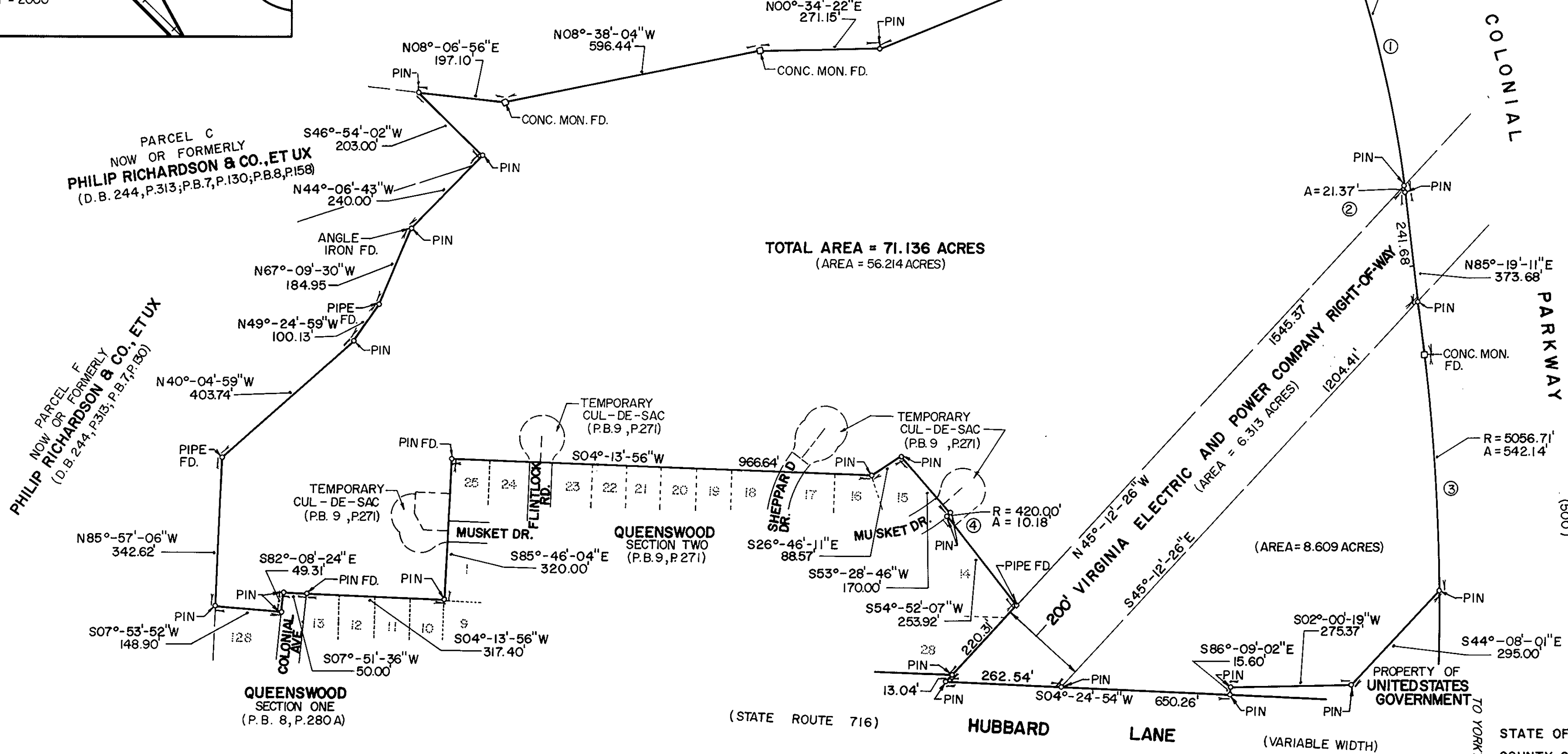
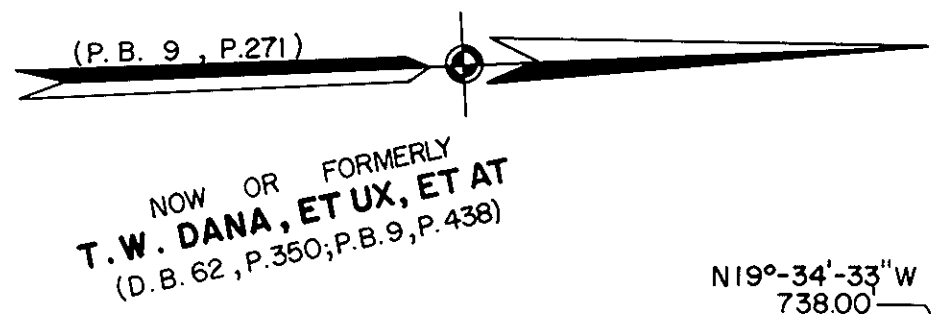
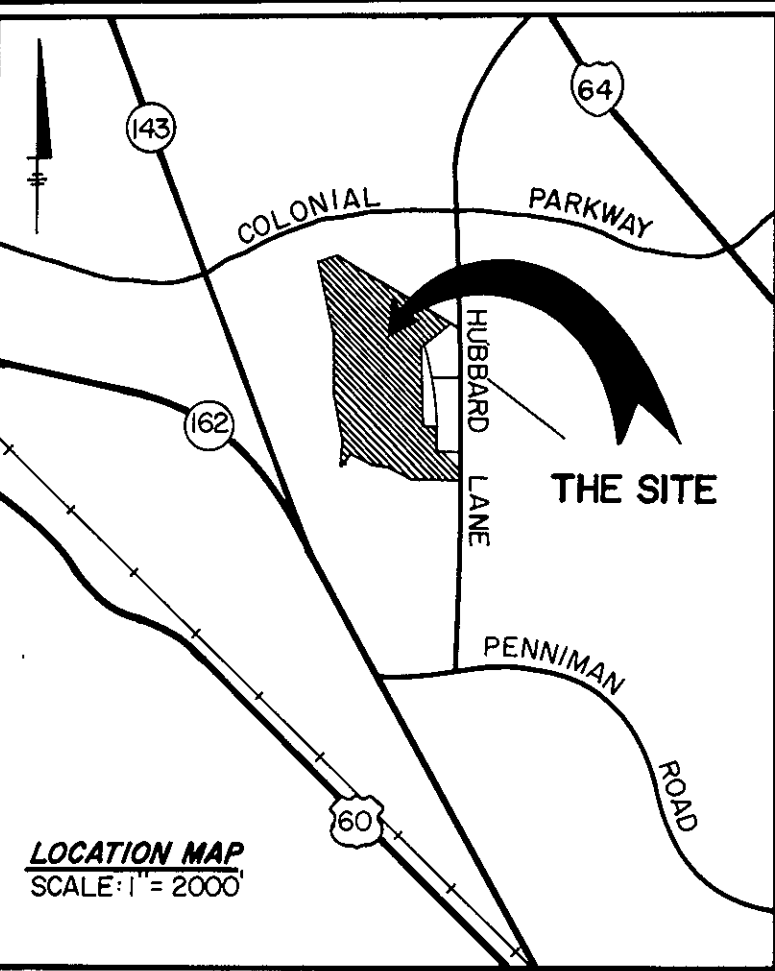
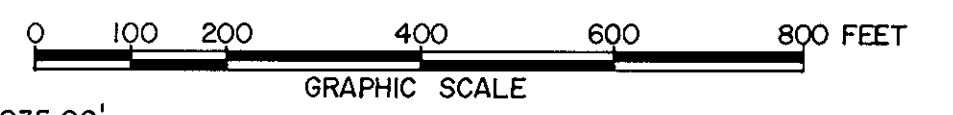


BOUNDARY LINE PLAT
OF
71.136 ACRES, BEING A PORTION OF THE
HOLCOMB TRACT
FOR (P.B. 5, P. 12)
KAR-SAN DEVELOPMENT, LTD.
BRUTON DISTRICT COUNTY OF YORK, VIRGINIA

THE SIRINE GROUP, LTD.
SURVEYORS • ENGINEERS • PLANNERS
BOX 450
WHITE MARSH, VIRGINIA
23183

SCALE: 1" = 200' MAY, 1986



I HEREBY CERTIFY THAT THIS SURVEY TO THE BEST OF MY KNOWLEDGE AND BELIEF, IS CORRECT AND COMPLIES WITH THE MINIMUM PROCEDURES AND STANDARDS ESTABLISHED BY THE VIRGINIA BOARD OF ARCHITECTS, PROFESSIONAL ENGINEERS, LAND SURVEYORS AND CERTIFIED LANDSCAPE ARCHITECTS.

SIGNED: C.E. Newbaker III
C.E. NEWBAKER III, L.S.

CURVE DATA				
NO.	RADIUS	DELTA	TANGENT	ARC
1	2835.00'	13°-17'-25"	330.29'	657.61'
2	2835.00'	0°-25'-55"	10.69'	21.37'
3	5056.71'	6°-08'-34"	271.33'	542.14'
4	420.00'	1°-23'-21"	5.09'	10.18'

THE PROPERTY EMBRACED WITHIN THE LIMITS OF THIS BOUNDARY SURVEY WAS CONVEYED TO BERNARD L. LIPMAN FROM THE CHESAPEAKE CORPORATION OF VIRGINIA BY DEED DATED JULY 8, 1964 AND RECORDED IN DEED BOOK 177, PAGE 709 IN THE CLERK'S OFFICE OF THE CIRCUIT COURT OF THE COUNTY OF YORK, VIRGINIA.

THIS BOUNDARY SURVEY IS BASED ON A CURRENT FIELD SURVEY.

STATE OF VIRGINIA
COUNTY OF YORK

IN THE CLERK'S OFFICE OF THE CIRCUIT COURT FOR THE COUNTY OF YORK THE 18TH DAY OF June, 1986
THIS MAP WAS PRESENTED AND ADMITTED TO RECORD AS THE LAW DIRECTS IN PLAT BOOK 10, PAGE 247

TESTE: EDITH M. ELLIOTT, CLERK
CLERK

BY: [Signature]

PROPERTY IS TAX MAP PARCEL 9, SECTION 10