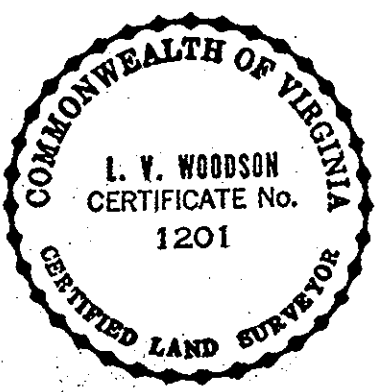
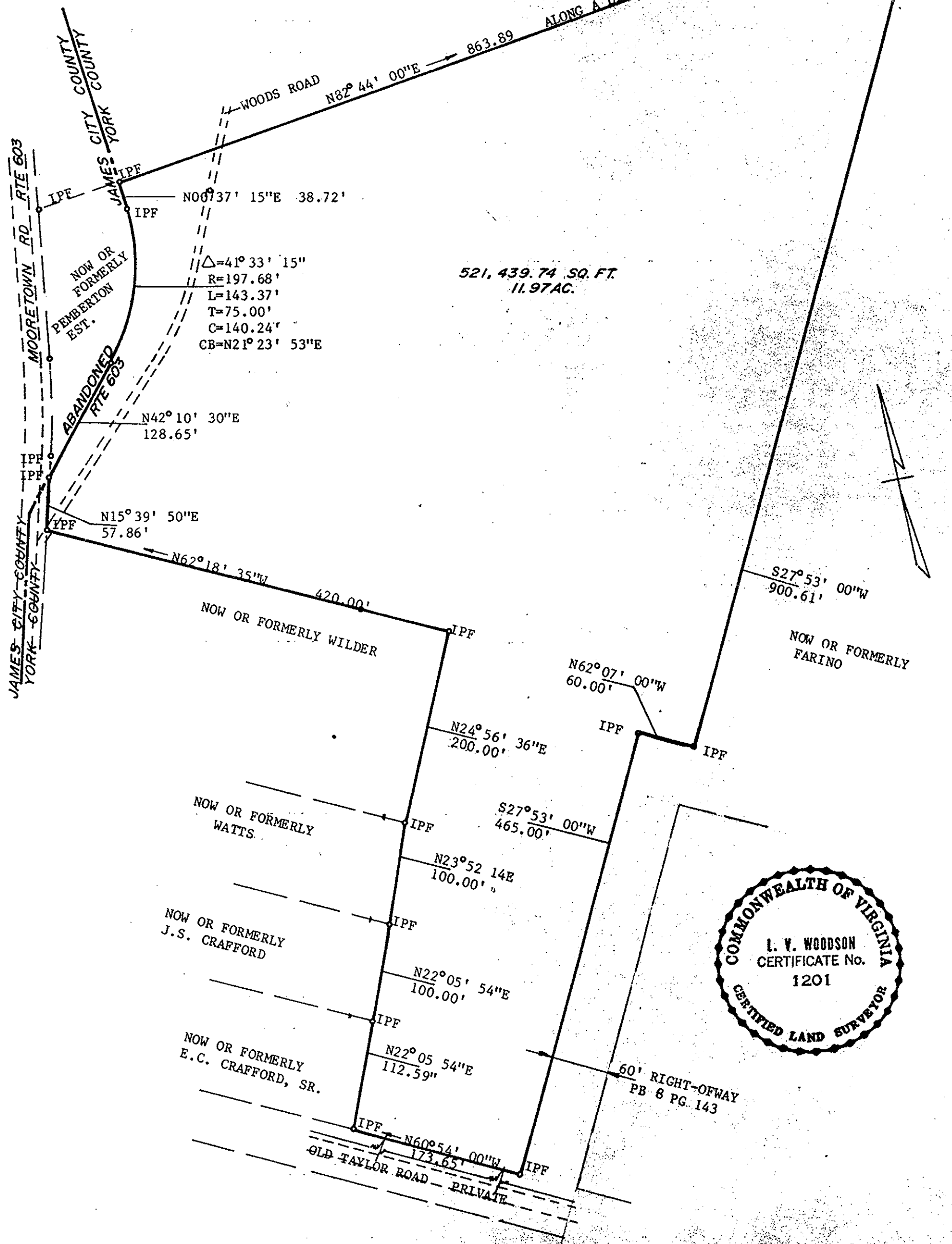


NOW OR FORMERLY WILKERSON

ALONG A LINE OF MARKED TREES



L. V. WOODSON & ASSOCIATES ENGINEERS & SURVEYORS, P. O. BOX 633 WILLIAMSBURG, VIRGINIA 23185

LEGEND ○ = IP = IRON PIN, □ = MON = MONUMENT, — = PROPERTY LINE, - - - = CENTERLINE, - - - - = EASEMENT LINE

A SURVEY FOR CONVEYANCE TO: YONG HO LIM
11.97 ACRES OF LAND
LYING IN BRUTON DISTRICT, YORK COUNTY, VA.

SCALE: 1"=100' REF: DB403/286 CLOSURE J. O. A3496 DATE 7-03-1986 AREA 11.97 AC.