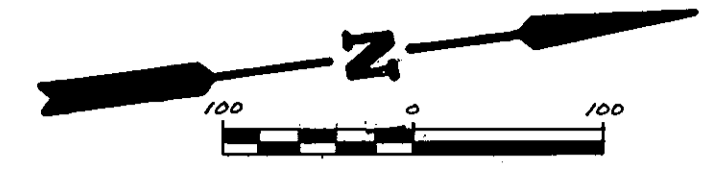


LOT CURVE TABLE

LOT CURVE	DELTA	RADIUS	LENGTH	TANGENT	CHORD	CHORD BEARING
19	6°06'32"	725.00'	77.30'	38.69'	77.26'	N15°15'44"E
20	12°23'28"	725.00'	156.79'	78.70'	156.49'	N24°30'44"E
22	2°53'35"	275.00'	13.89'	6.94'	13.88'	N29°15'41"E
23	30°14'49"	275.00'	145.18'	74.32'	143.50'	N12°41'29"E
24	27°52'36"	275.00'	133.80'	68.25'	132.48'	N16°22'14"W
25	26°00'00"	275.00'	124.79'	63.49'	123.72'	N43°18'32"W
26	28°59'00"	275.00'	139.11'	71.08'	137.63'	N70°48'02"W
27a	96°22'46"	25.00'	42.05'	27.95'	37.27'	N37°06'09"W
27b	28°05'36"	475.00'	232.90'	118.84'	230.58'	N25°08'02"E
28a	6°54'40"	475.00'	57.29'	28.68'	57.26'	N42°38'10"E
28b	57°29'16"	60.00'	60.20'	32.91'	57.71'	N74°50'07"E
28c	155°33'25"	60.00'	162.90'	277.01'	117.28'	N25°48'03"E
29	36°32'29"	60.00'	38.27'	19.81'	37.62'	N70°14'54"W
30a	75°50'38"	60.00'	79.42'	46.75'	73.75'	S53°33'33"W
30b	36°51'03"	60.00'	38.59'	19.99'	37.93'	S34°03'45"W
30c	5°29'17"	265.43'	25.42'	12.72'	25.41'	S49°44'38"W
30d	2°30'46"	525.00'	23.03'	11.52'	23.02'	S45°44'37"W
31	16°43'56"	525.00'	153.32'	77.21'	152.77'	S36°07'16"W
32a	17°49'52"	525.00'	163.39'	82.36'	162.73'	S18°50'21"W
32b	84°47'03"	25.00'	36.99'	22.82'	33.71'	S52°18'57"W
32c	10°54'49"	525.00'	100.00'	50.15'	99.85'	S89°15'04"W



PLAT OF  
**BANBURY CROSS**

SECTION 4

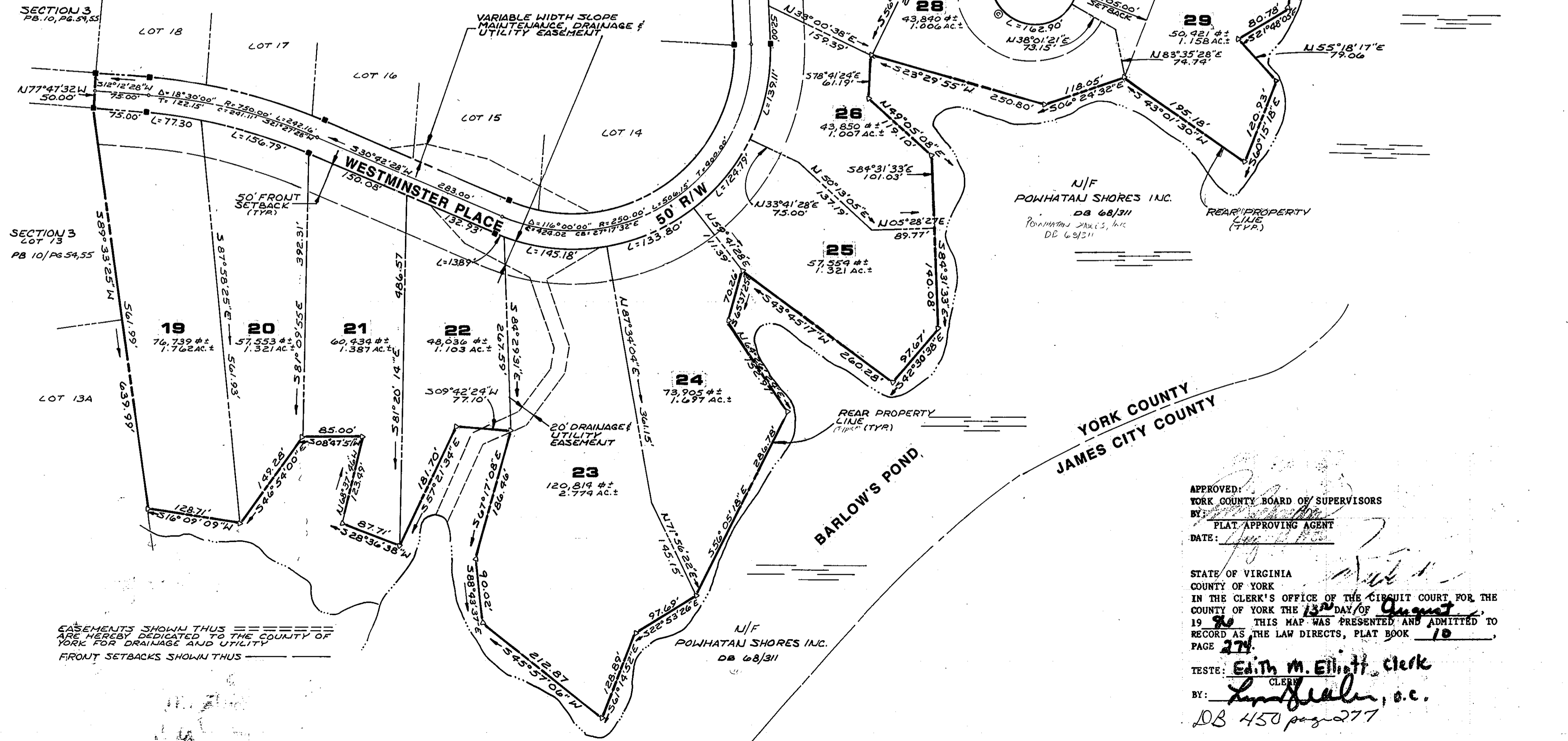
COUNTY OF YORK, VIRGINIA  
OWNER/DEVELOPER: POWHATAN SHORES, INC.  
**AES, a professional corporation**  
1761 Jamestown Road, Williamsburg, Va. 23185  
804-253-0040  
Architecture, Engineering, Surveying, Planning

SHEET 2 OF 2

SCALE: 1"=100' JOB NO. 3829 DATE: JULY 15, 1988

Δ = 22°54'21"  
R = 290.43'  
L = 96.12'  
T = 48.71'  
C = 95.98'  
CB = N58°27'10"E

SEE SHEET 1 FOR CONTINUATION OF SECTION 4



EASEMENTS SHOWN THUS ARE HEREBY DEDICATED TO THE COUNTY OF YORK FOR DRAINAGE AND UTILITY FRONT SETBACKS SHOWN THUS

APPROVED:  
YORK COUNTY BOARD OF SUPERVISORS  
BY: [Signature]  
PLAT APPROVING AGENT  
DATE: [Date]

STATE OF VIRGINIA  
COUNTY OF YORK  
IN THE CLERK'S OFFICE OF THE CIRCUIT COURT FOR THE COUNTY OF YORK THE 13<sup>th</sup> DAY OF August 1988 THIS MAP WAS PRESENTED AND ADMITTED TO RECORD AS THE LAW DIRECTS, PLAT BOOK 10 PAGE 274.

TESTE: Edith M. Elliott, Clerk  
BY: [Signature], o.c.  
DB 450 page 277