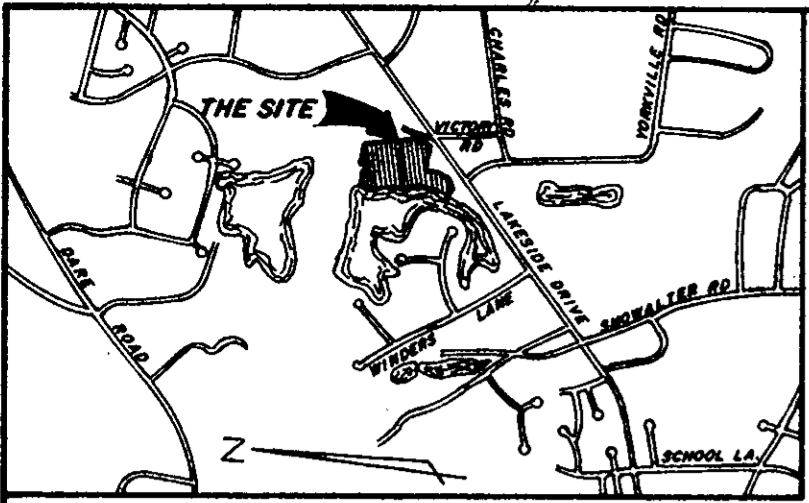


# WINDER'S POND SECTION THREE GRAFTON DISTRICT COUNTY OF YORK, VIRGINIA

C.K. TUDOR ENGINEERS, INC.  
11524 JEFFERSON AVENUE  
NEWPORT NEWS, VIRGINIA 23601

SCALE: 1" = 100'  
FEBRUARY 28, 1986  
SHEET 1 OF 1



VICINITY MAP SCALE 1" = 2000'

THE PLATTING OF THE LAND HEREON SHOWN IS WITH THE FREE CONSENT AND IN ACCORDANCE WITH THE DESIRE OF THE UNDERSIGNED OWNERS AND PROPRIETORS.

ATLANTIC HOMES DEVELOPMENT CORPORATION

*Kenneth L. Allen*  
KENNETH L. ALLEN PRESIDENT  
*Svein J. Lassen*  
SVEIN J. LASSEN SECRETARY

DATE: August 26, 1986

*Frances K. Barber*  
A NOTARY PUBLIC IN AND FOR THE CITY OF NEWPORT NEWS, VIRGINIA, DO HEREBY CERTIFY THAT THE ABOVE NAMED PERSONS WHOSE NAMES ARE SIGNED TO THE FOREGOING WRITING HAVE ACKNOWLEDGED THE SAME BEFORE ME IN MY CITY AND STATE AFORESAID.

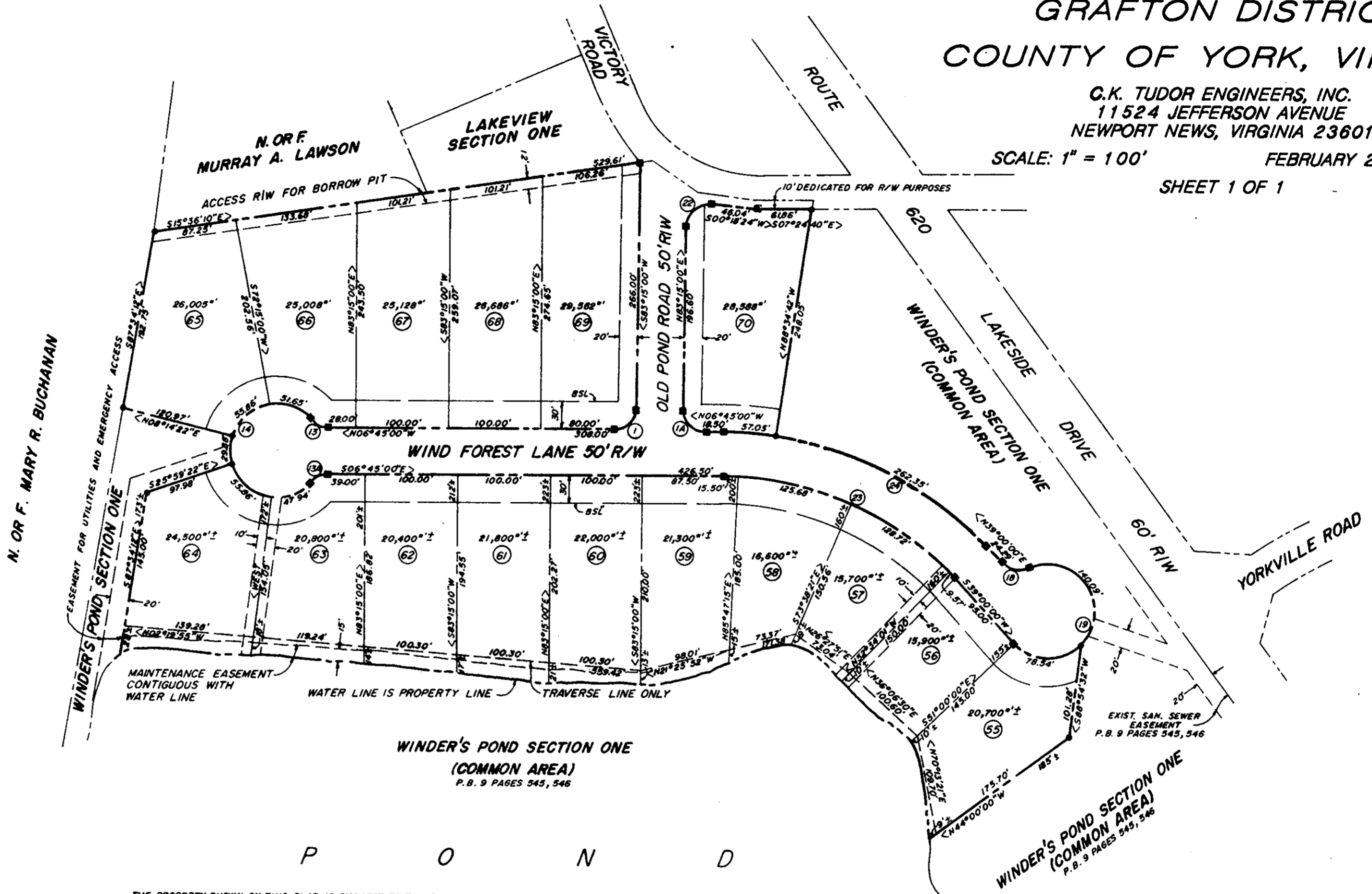
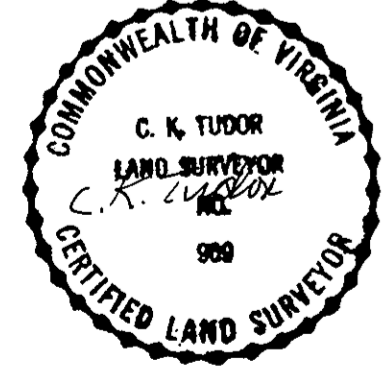
GIVEN UNDER MY HAND THIS 26th DAY OF August, 1986

*Frances K. Barber*  
NOTARY PUBLIC  
MY COMMISSION EXPIRES July 1, 1990

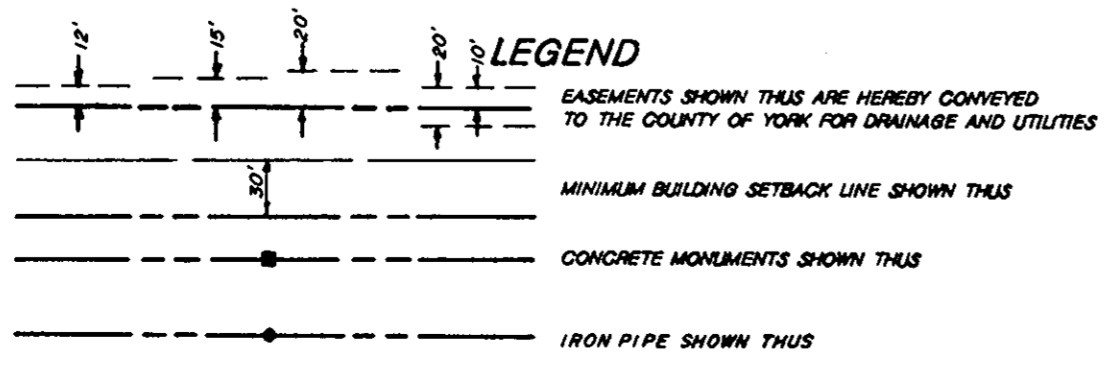
TO THE BEST OF MY KNOWLEDGE AND BELIEF, ALL THE REQUIREMENTS AS SET FORTH IN THE ORDINANCE FOR APPROVING PLATS OF SUBDIVISIONS IN THE COUNTY OF YORK, VIRGINIA HAVE BEEN COMPLIED WITH, INCLUDING A CLOSURE OF NOT LESS THAN 1/10,000'.

THIS IS TO CERTIFY THAT THE LAND EMBRACED IN THIS SUBDIVISION IS IN THE NAME OF ATLANTIC HOMES DEVELOPMENT CORPORATION, A VIRGINIA CORPORATION AND WAS ACQUIRED FROM ATLANTIC HOMES CORPORATION, A VIRGINIA CORPORATION BY DEED DATED OCTOBER 29, 1982 AND DULY RECORDED IN THE CLERK'S OFFICE OF THE CIRCUIT COURT OF THE COUNTY OF YORK, VIRGINIA IN DEED BOOK 370, PAGE 456 I CERTIFY THAT MONUMENTS AS SHOWN ON THIS PLAT WILL BE SET ON OR BEFORE DECEMBER 31, 1988

*C.K. Tudor*  
C.K. TUDOR P.E. & C.L.S.



AREA WITHIN LOTS..... 8.280± AC.  
AREA WITHIN RIGHT OF WAY..... 1.637 AC.  
TOTAL SUBDIVIDED AREA..... 9.917± AC.



THE PROPERTY SHOWN ON THIS PLAT IS SUBJECT TO THE PROVISIONS OF THAT CERTAIN DECLARATION OF COVENANTS, CONDITIONS AND RESTRICTIONS DATED DEC. 7, 1982 TO BE RECORDED IN THE CLERK'S OFFICE OF THE CIRCUIT COURT FOR THE COUNTY OF YORK, VIRGINIA CONTEMPORANEOUSLY HERewith. ATLANTIC HOMES DEVELOPMENT CORPORATION IN RECORDING THE PLAT OF SUBDIVISION OF WINDER'S POND SECTION ONE HAS DESIGNATED CERTAIN AREAS IN SAID DECLARATION AS "COMMONS" INTENDED FOR USE BY OWNERS IN WINDER'S POND SECTIONS ONE, TWO, AND THREE FOR ACCESS, PARKING, RECREATION AND RELATED ACTIVITIES. THE SAID AREAS ARE NOT HEREBY DESIGNATED FOR USE TO THE GENERAL PUBLIC, BUT FOR THE COMMON USE AND ENJOYMENT OF SAID HOMEOWNERS, AS MORE FULLY PROVIDED IN ARTICLE II OF AFORESAID DECLARATION.

NO.	RADIUS	DELTA	TANGENT	ARC	CHORD	CHORD BEARING
1	25.00'	90°00'00"	25.00'	39.27'	35.36'	N51°45'00"W
1A	25.00'	90°00'00"	25.00'	39.27'	35.36'	N38°15'00"E
13	25.00'	48°11'23"	11.18'	21.03'	20.41'	N17°20'41"E
13A	25.00'	48°11'23"	11.18'	21.03'	20.41'	S30°50'41"E
14	50.00'	276°22'46"	-	241.19'	-	-
18	25.00'	70°31'44"	17.68'	30.77'	28.87'	N03°44'08"E
19	50.00'	250°31'44"	-	218.63'	-	-
22	25.00'	97°03'24"	28.29'	42.35'	37.46'	S48°13'18"E
23	350.00'	45°45'00"	147.67'	279.47'	272.11'	S16°07'30"W
24	400.00'	45°45'00"	168.76'	319.40'	310.98'	N16°07'30"E

APPROVED:  
YORK COUNTY BOARD OF SUPERVISORS  
BY: *[Signature]*  
PLAT APPROVING AGENT  
DATE: Sept 5, 1986

STATE OF VIRGINIA  
COUNTY OF YORK  
IN THE CLERK'S OFFICE OF THE CIRCUIT COURT FOR THE COUNTY OF YORK THE 8th DAY OF Sept, 1986  
THIS MAP WAS PRESENTED AND ADMITTED TO RECORD AS THE LAW DIRECTS IN PLAT BOOK 10, PAGE 289

TESTE: EDITH M. ELLIOTT, CLERK  
CLERK  
BY: *Carol K. Rossmiller, D.C.*