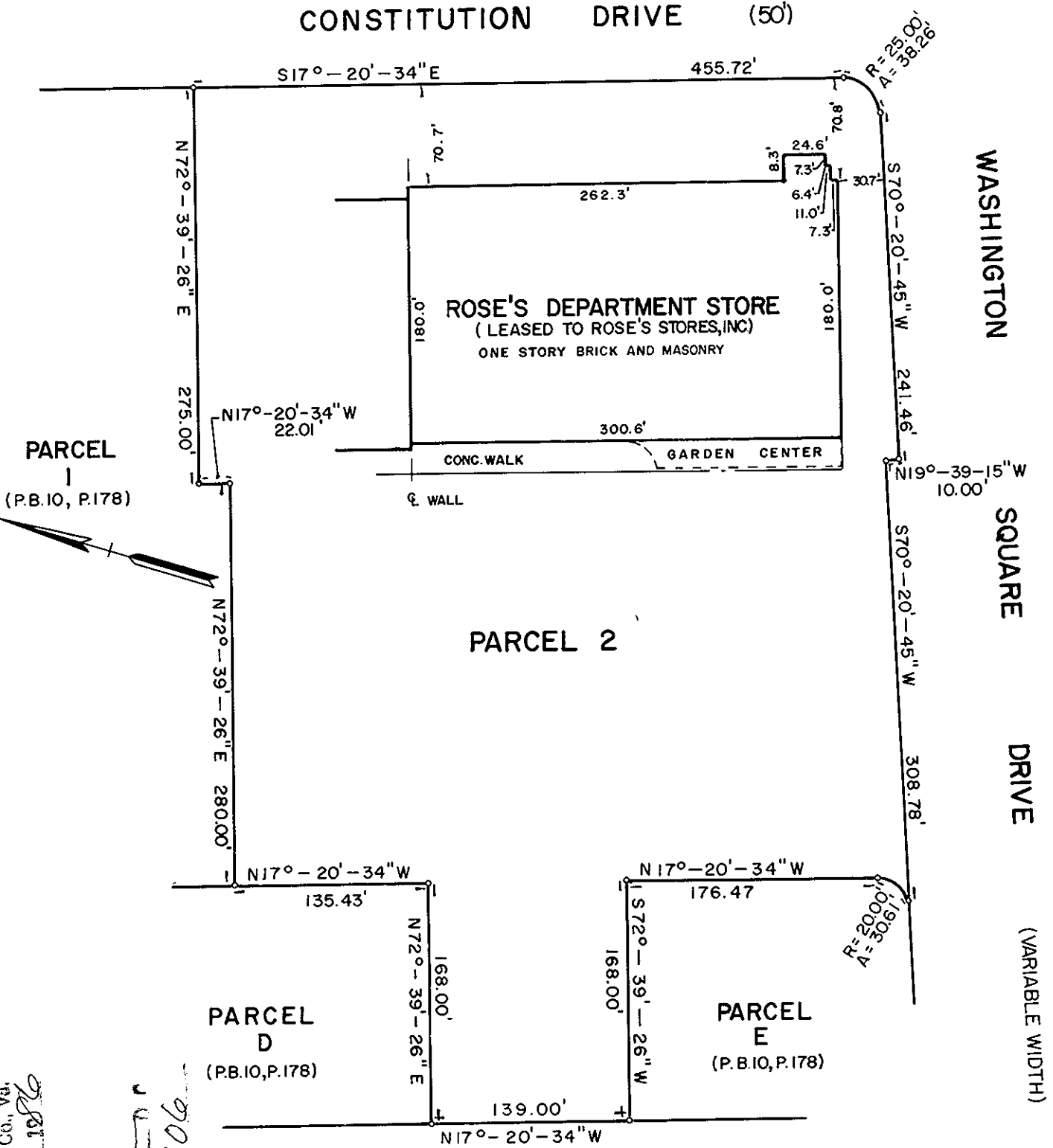


CONSTITUTION DRIVE (50')



Filed in the Clerk's Office, Circuit Court, York Co., Va.
 the 18 day of November 1986
 Edith M. Elliott, Clerk
Edith M. Elliott
 10 306

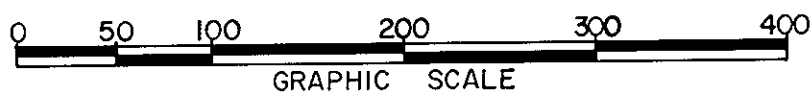
U. S. ROUTE 17 (VARIABLE WIDTH)

LEASE PLAT
 OF
 THE PROPERTY OF
 PLANTATION REALTY COMPANY
 FOR
 ROSE'S STORES, INC.

BEING A PORTION OF PARCEL 2 (P.B.10, P.178)

WASHINGTON SQUARE SHOPPING CENTER
 GRAFTON DISTRICT COUNTY OF YORK, VIRGINIA

SCALE: 1" = 100' OCTOBER 13, 1986



THE SIRINE GROUP, LTD.
 SURVEYORS • ENGINEERS • PLANNERS
 GLOUCESTER, VIRGINIA