

SUBDIVISION OF
WOODLAKE CROSSING
SECTION V
COUNTY OF YORK, VIRGINIA



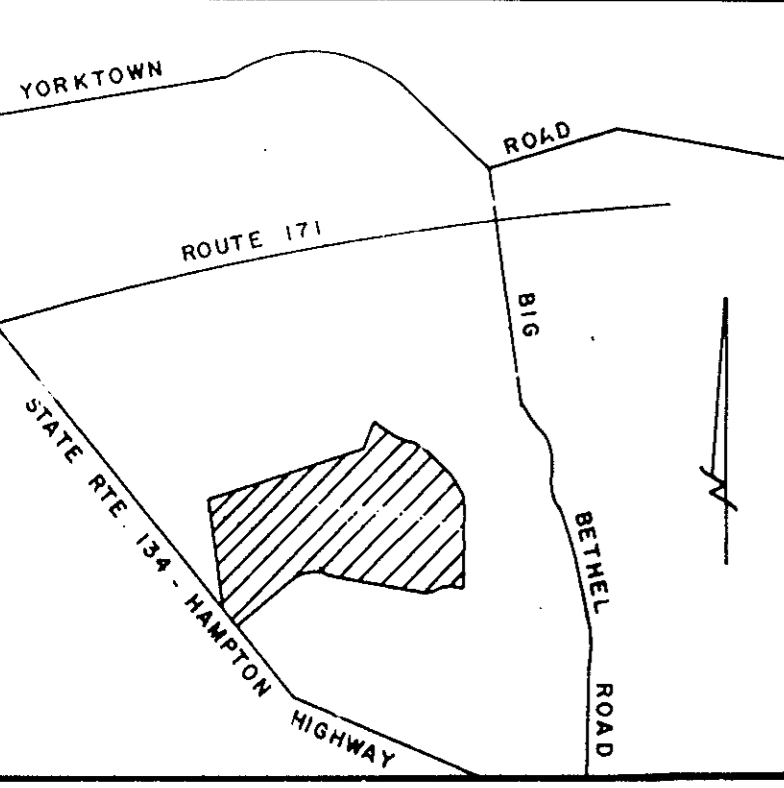
SCALE: 1" = 100' APRIL 24, 1987
SHEET 1 OF 1



AREA WITHIN LOTS 3.971 ACRES
AREA WITHIN RIGHT-OF-WAY..... 0.584 ACRES
TOTAL SUBDIVIDED AREA..... 4.555 ACRES

EASEMENTS SHOWN THUS ARE HEREBY CONVEYED TO THE COUNTY OF YORK FOR DRAINAGE AND UTILITIES:

MINIMUM BUILDING SETBACK LINE SHOWN THUS:



VICINITY MAP
SCALE: 1" = 2000'

THE PLATTING OF THE LAND HEREON SHOWN IS WITH THE FREE CONSENT AND IN ACCORDANCE WITH THE DESIRE OF THE UNDERSIGNED OWNER

"HOUSING ASSOCIATES, A VIRGINIA LIMITED PARTNERSHIP"

ATLANTIC HOMES DEVELOPMENT CORPORATION, GENERAL PARTNER BY KENNETH L. ALLEN, PRESIDENT.

I, Nancy K Krauss, A NOTARY PUBLIC IN AND FOR THE COUNTY OF YORK OF VIRGINIA DO HEREBY CERTIFY THAT THE ABOVE NAMED PERSON WHOSE NAME IS SIGNED TO THE FOREGOING WRITING HAS ACKNOWLEDGED THE SAME BEFORE ME IN MY COUNTY AND STATE AFORESAID.

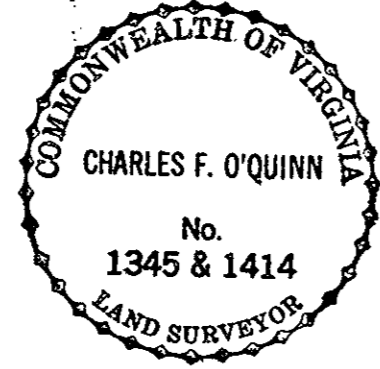
GIVEN UNDER MY HAND THIS 27th DAY OF April, 1987

Nancy K Krauss
NOTARY PUBLIC

MY COMMISSION EXPIRES 2/23/90

TO THE BEST OF MY KNOWLEDGE AND BELIEF, ALL THE REQUIREMENTS AS SET FORTH IN THE ORDINANCE FOR APPROVING PLATS OF SUBDIVISION IN THE COUNTY OF YORK, VIRGINIA HAVE BEEN COMPLIED WITH, INCLUDING A CLOSURE OF NOT LESS THAN 1'/10,000'. THIS IS TO CERTIFY THAT THE LAND EMBRACED IN THIS SUBDIVISION IS IN THE NAME OF HOUSING ASSOCIATES, A VIRGINIA LIMITED PARTNERSHIP AND WAS ACQUIRED FROM THOMAS R. HALL, VIRGINIA E. HALL, H.W. ROBERSON AND EMMA MAE ROBERSON BY DEED DATED MARCH 28, 1984, AND DULY RECORDED IN THE CLERK'S OFFICE OF THE CIRCUIT COURT OF THE COUNTY OF YORK, VIRGINIA, IN DEED BOOK 398 PAGE 57. I CERTIFY THAT MONUMENTS AS SHOWN ON THIS PLAT WILL BE SET ON OR BEFORE DEC. 31, 1987.

Charles F. O'Quinn
CHARLES F. O'QUINN, C.L.S.

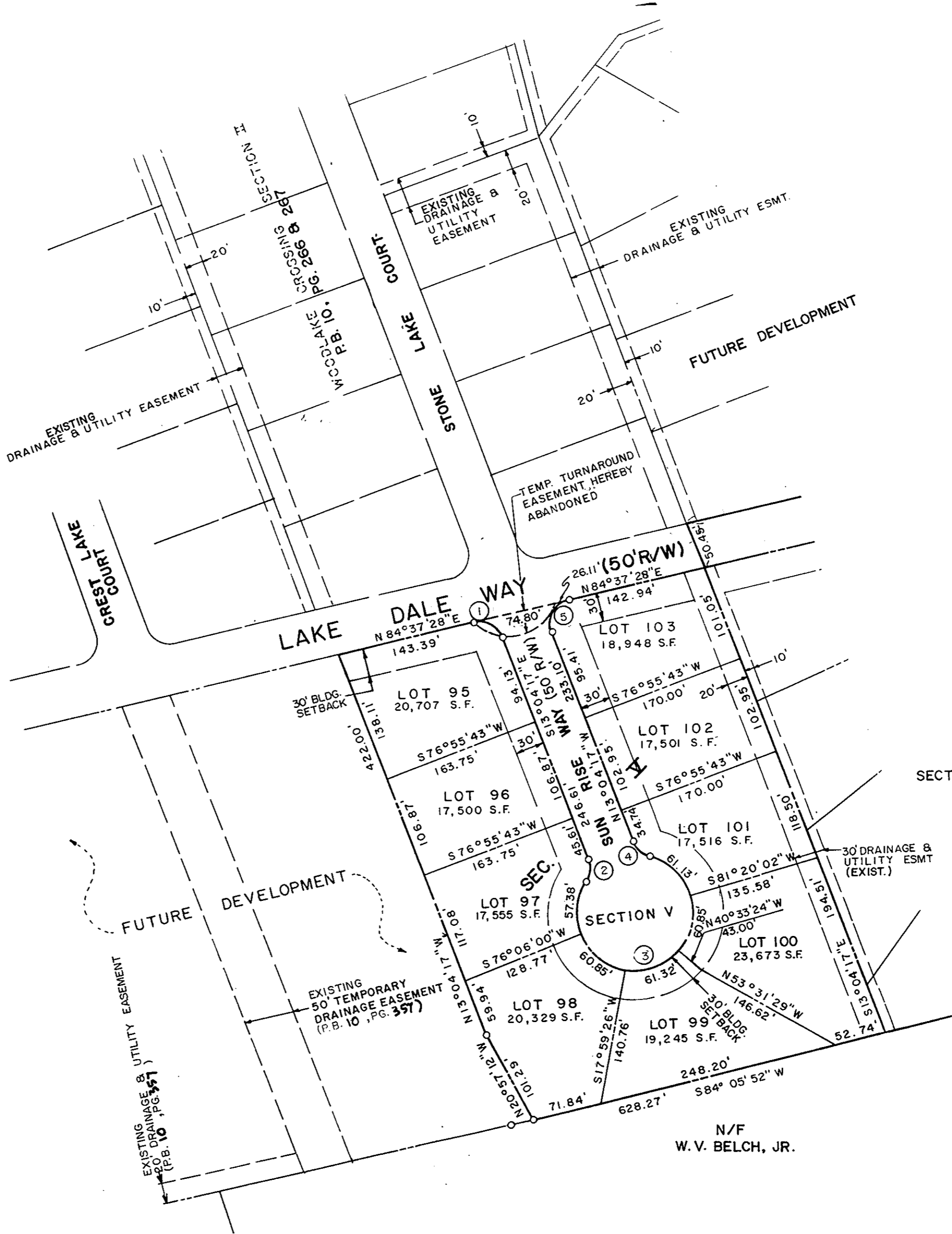


UTILITIES NOTES

EACH LOT WITHIN THIS SUBDIVISION IS SERVED BY PUBLIC WATER PROVIDED BY NEWPORT NEWS WATERWORKS

EACH LOT WITHIN THIS SUBDIVISION IS SERVED BY PUBLIC SEWER PROVIDED BY YORK COUNTY

SECTION I INCLUDES CROSSING SECTION 2-22-23-24 PG. 55-101 B.B. BOCCIA, M.W.



SECTION VI

N/F
W.V. BELCH, JR.

CURVE DATA TABLE						
NO.	Δ	RADIUS	ARC	TAN	CHORD	CH. BEARING
1	82°18'15"	25.00'	35.91'	21.85'	32.90'	S54°13'24"E
2	53°58'05"	25.00'	23.55'	12.73'	22.69'	S13°54'46"W
3	287°56'10"	60.00'	301.53'	43.64'	70.59'	N76°55'43"E
4	53°58'05"	25.00'	23.55'	12.73'	22.69'	N40°03'20"W
5	97°41'45"	25.00'	42.63'	28.61'	37.65'	N35°46'36"E

APPROVED:
YORK COUNTY BOARD OF SUPERVISORS
BY: [Signature]
DATE: May 13, 1987

STATE OF VIRGINIA
COUNTY OF YORK
IN THE CLERK'S OFFICE OF THE CIRCUIT COURT FOR THE COUNTY OF YORK THE 13 DAY OF May, 1987 THIS MAP WAS PRESENTED AND ADMITTED TO RECORD AS THE LAW DIRECTS IN PLAT BOOK 10, PAGE 358.
TESTE: Cheryl M. Elliott, Clerk
CLERK
BY: Nancy Stoney, DC