

VICINITY MAP  
SCALE: 1" = 2000'

| CURVE DATA TABLE |            |         |         |        |         | CURVE DATA TABLE |     |           |         |         |        |         |             |
|------------------|------------|---------|---------|--------|---------|------------------|-----|-----------|---------|---------|--------|---------|-------------|
| NO.              | Δ          | RADIUS  | ARC.    | TAN    | CHORD   | CH. BEARING      | NO. | Δ         | RADIUS  | ARC.    | TAN    | CHORD   | CH. BEARING |
| 1                | 82°18'15"  | 25.00'  | 35.91'  | 21.85' | 32.90'  | S54°13'24"E      | 13  | 26°17'13" | 25.00'  | 11.47'  | 5.84'  | 11.37'  | N64°19'31"E |
| 2                | 53°58'05"  | 25.00'  | 23.55'  | 12.73' | 22.69'  | N13°54'46"E      | 14  | 20°05'44" | 430.44' | 150.97' | 76.27' | 150.20' | N67°25'16"E |
| 3                | 287°56'10" | 60.00'  | 301.53' | 43.64' | 70.59'  | S76°55'43"W      | 15  | 27°15'04" | 380.44' | 180.95' | 92.22' | 179.25' | N70°59'56"E |
| 4                | 53°58'05"  | 25.00'  | 23.55'  | 12.73' | 22.69'  | S40°03'20"E      | 16  | 60°00'15" | 50.00'  | 52.36'  | 28.87' | 50.00'  | S05°22'40"E |
| 5                | 90°32'25"  | 25.00'  | 39.51'  | 25.24' | 35.52'  | S32°11'55"W      | 17  | 00°54'48" | 25.00'  | 10.40'  | 0.10'  | 0.40'   | S85°04'52"W |
| 6                | 20°05'44"  | 430.44' | 150.97' | 76.27' | 150.20' | S67°25'16"W      | 18  | 00°41'00" | 380.44' | 4.54'   | 2.27'  | 4.54'   | N77°57'45"E |
| 7                | 20°14'51"  | 380.44' | 134.44' | 67.93' | 133.74' | N67°29'50"E      | 19  | 63°53'46" | 50.00'  | 55.76'  | 31.18' | 52.92'  | S06°32'14"E |
| 8                | 89°18'28"  | 25.00'  | 38.97'  | 24.70' | 35.14'  | S57°43'31"E      | 20  | 06°19'13" | 380.44' | 41.97'  | 21.00' | 41.95'  | N81°27'51"E |
| 9                | 53°58'05"  | 25.00'  | 23.55'  | 12.73' | 22.69'  | N13°54'46"E      |     |           |         |         |        |         |             |
| 10               | 287°56'10" | 60.00'  | 301.53' | 43.64' | 70.59'  | S76°55'43"W      |     |           |         |         |        |         |             |
| 11               | 53°58'05"  | 25.00'  | 23.55'  | 12.73' | 22.69'  | S40°03'20"E      |     |           |         |         |        |         |             |
| 12               | 97°41'45"  | 25.00'  | 42.63'  | 28.61' | 37.65'  | S35°46'36"E      |     |           |         |         |        |         |             |

SUBDIVISION  
OF  
**WOODLAKE CROSSING**  
SECTIONS VII & VIII  
COUNTY OF YORK, VIRGINIA

**ta**  
Talbot & Associates, Ltd.  
Architects, Engineers, Planners, Surveyors, Landscape Architects

SCALE: 1" = 100' SHEET 1 OF 1

OCT. 7, 1986

THE PLATTING OF THE LAND HEREON SHOWN IS WITH THE FREE CONSENT AND IN ACCORDANCE WITH THE DESIRE OF THE UNDERSIGNED OWNER.

"HOUSING ASSOCIATES, A VIRGINIA LIMITED PARTNERSHIP"

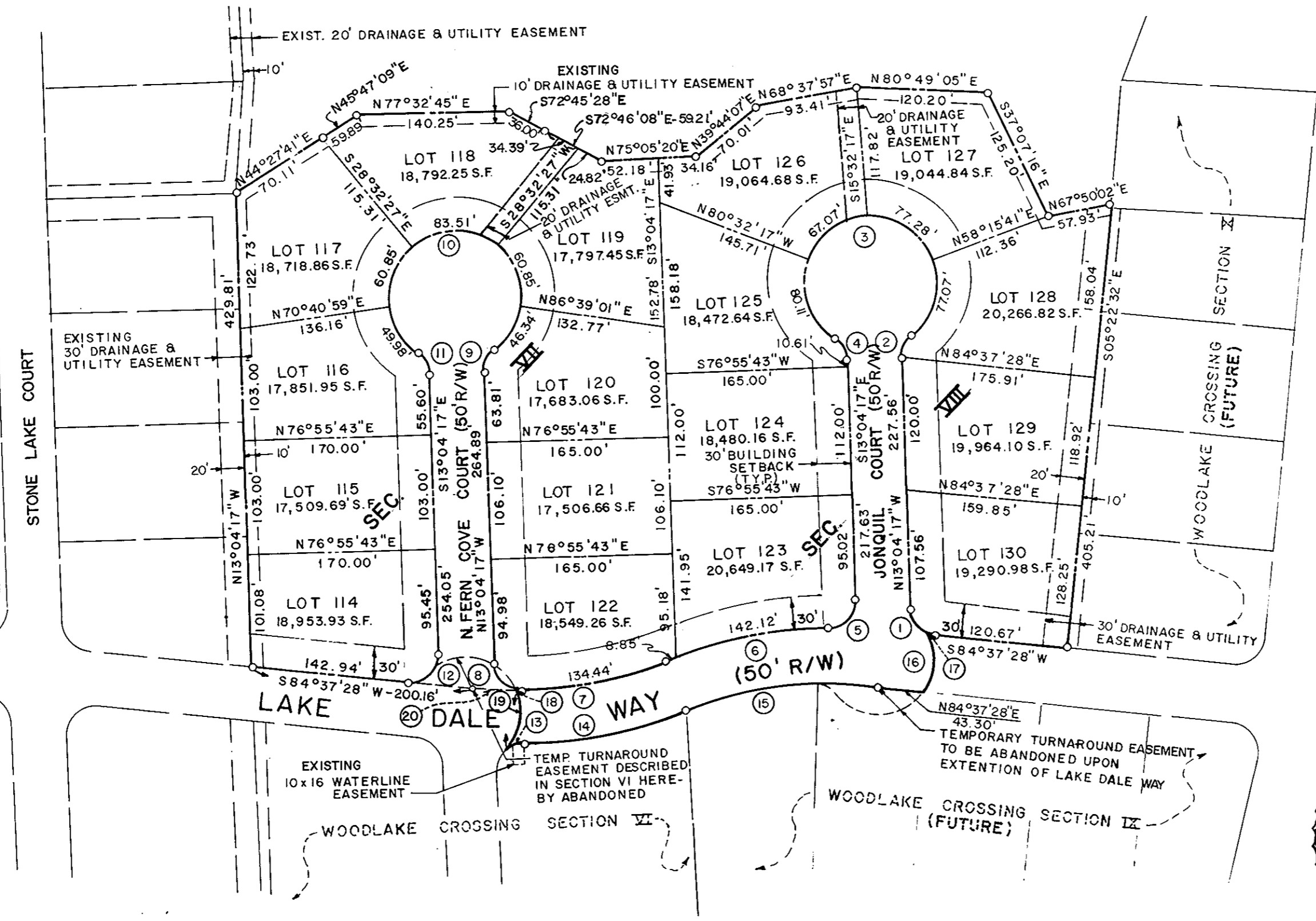
ATLANTIC HOMES DEVELOPMENT CORPORATION, GENERAL PARTNER BY KENNETH L. ALLEN, PRESIDENT.

I, Nancy K Krauss, A NOTARY PUBLIC IN AND FOR THE COUNTY OF YORK OF VIRGINIA DO HEREBY CERTIFY THAT THE ABOVE NAMED PERSON WHOSE NAME IS SIGNED TO THE FOREGOING WRITING HAS ACKNOWLEDGED THE SAME BEFORE ME IN MY COUNTY AND STATE AFORESAID.

GIVEN UNDER MY HAND THIS 29th DAY OF April, 1987

Nancy K Krauss  
NOTARY PUBLIC

MY COMMISSION EXPIRES 2/23/90



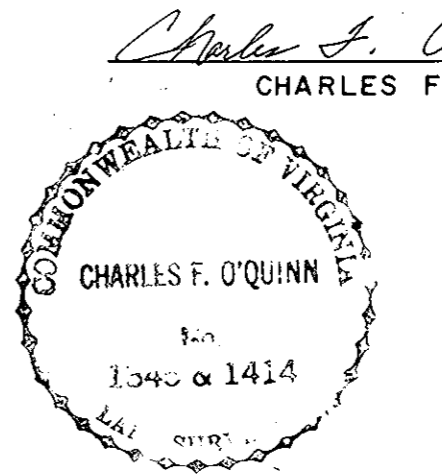
AREA WITHIN LOTS ..... 7.315 ACRES  
 AREA WITHIN RIGHT-OF-WAY... 1.612 ACRES  
 TOTAL SUBDIVIDED AREA ..... 8.927 ACRES

EASEMENTS SHOWN THUS ARE HEREBY CONVEYED TO THE COUNTY OF YORK FOR DRAINAGE AND UTILITIES:

MINIMUM BUILDING SETBACK LINE SHOWN THUS:

UTILITIES NOTES:  
 EACH LOT WITHIN THIS SUBDIVISION IS SERVED BY PUBLIC WATER PROVIDED BY NEWPORT NEWS WATERWORKS.  
 EACH LOT WITHIN THIS SUBDIVISION IS SERVED BY PUBLIC SEWER PROVIDED BY YORK COUNTY.

TO THE BEST OF MY KNOWLEDGE AND BELIEF, ALL THE REQUIREMENTS AS SET FORTH IN THE ORDINANCE FOR APPROVING PLATS OF SUBDIVISION IN THE COUNTY OF YORK, VIRGINIA HAVE BEEN COMPLIED WITH, INCLUDING A CLOSURE OF NOT LESS THAN 1/10,000. THIS IS TO CERTIFY THAT THE LAND EMBRACED IN THIS SUBDIVISION IS IN THE NAME OF HOUSING ASSOCIATES, A VIRGINIA LIMITED PARTNERSHIP AND WAS ACQUIRED FROM THOMAS R. HALL, VIRGINIA E. HALL, H.W. ROBERSON AND EMMA MAE ROBERSON BY DEED DATED MARCH 28, 1984, AND DULY RECORDED IN THE CLERK'S OFFICE OF THE CIRCUIT COURT OF THE COUNTY OF YORK, VIRGINIA, IN DEED BOOK 398 PAGE 57. I CERTIFY THAT MONUMENTS AS SHOWN ON THIS PLAT WILL BE SET ON OR BEFORE DEC. 31, 1987.



Charles F. O'Quinn  
CHARLES F. O'QUINN, C.L.S.

APPROVED:

YORK COUNTY BOARD OF SUPERVISORS

BY: [Signature]

DATE: MAY 22, 1987

STATE OF VIRGINIA  
 COUNTY OF YORK

IN THE CLERK'S OFFICE OF THE CIRCUIT COURT FOR THE COUNTY OF YORK THE 22nd DAY OF May, 1987 THIS MAP WAS PRESENTED AND ADMITTED TO RECORD AS THE LAW DIRECTS IN PLAT BOOK 10, PAGE 361.

TESTE: [Signature] CLERK

BY: [Signature]

