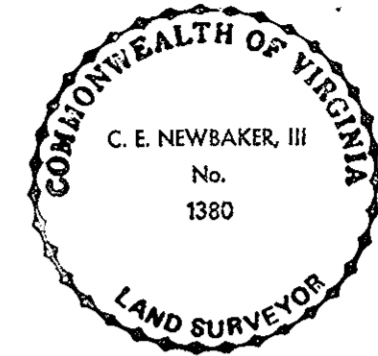
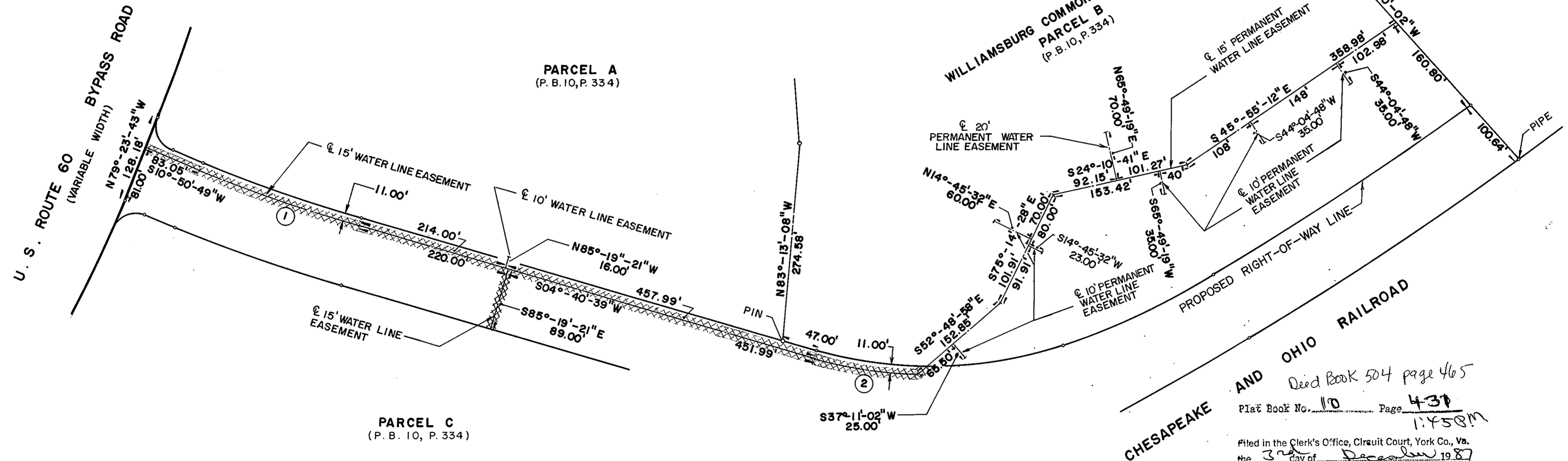
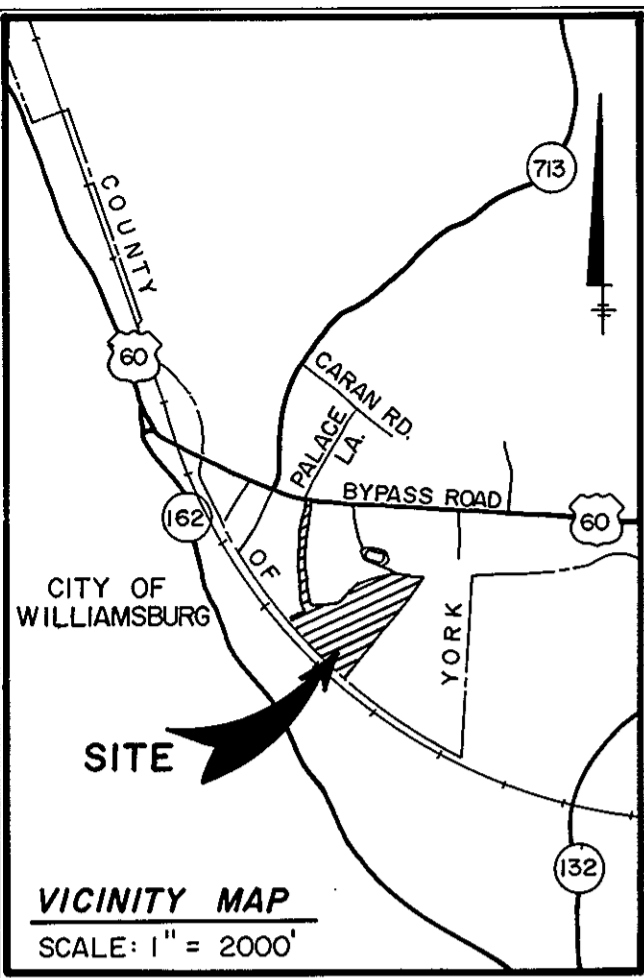
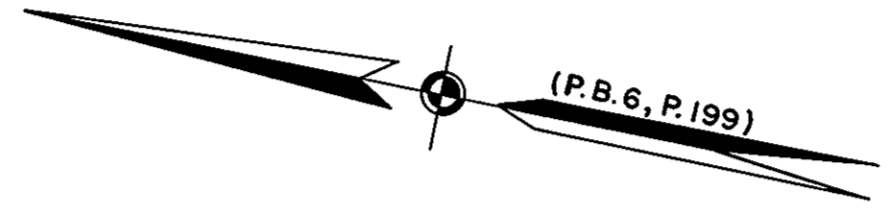


I HEREBY CERTIFY THAT THIS SURVEY TO THE BEST OF MY KNOWLEDGE AND BELIEF, IS CORRECT AND COMPLIES WITH THE MINIMUM PROCEDURES AND STANDARDS ESTABLISHED BY THE VIRGINIA BOARD OF ARCHITECTS, PROFESSIONAL ENGINEERS, LAND SURVEYORS AND CERTIFIED LANDSCAPE ARCHITECTS.

SIGNED: C. E. Newbaker III
C. E. NEWBAKER III L.S.

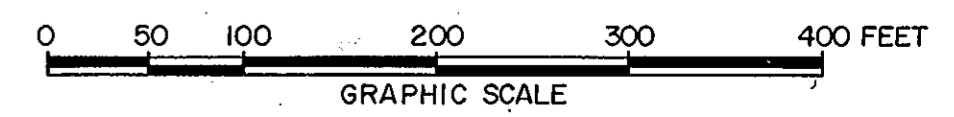


NOW OR FORMERLY
C. C. CASEY
(P.B. 9, P. 107)



Deed Book 504 page 465
Plat Book No. 110 Page 431
1:458M
Filed in the Clerk's Office, Circuit Court, York Co., Va.
the 3rd day of December 1987
Teste:
Edith M. Elliott, Clerk
[Signature] D.C.

PLAT OF
TEMPORARY AND PERMANENT
WATER LINE EASEMENTS
TO BE DEDICATED
TO THE CITY OF WILLIAMSBURG
BY
WILLIAMSBURG COMMONS, INC.,
A VIRGINIA CORPORATION
BRUTON DISTRICT COUNTY OF YORK, VIRGINIA
Scale: 1" = 100' November 25, 1987



THE SIRINE GROUP, LTD.
SURVEYORS • ENGINEERS • PLANNERS
BOX 450, ROUTE 17
WHITE MARSH, VIRGINIA 23183

NOTE:
CROSS HATCH AREA REPRESENTS AREA OF
TEMPORARY WATER LINE EASEMENTS.

CURVE TABLE					
NO.	RADIUS	DELTA	ARC	TANGENT	CHORD
1	2243.40'	06°-10'-10"	241.56'	120.90'	241.45'
2	594.76'	14°-22'-16"	149.18'	74.98'	148.79'