

COLBERT'S TRACE

COUNTY OF YORK, VIRGINIA

THE DeYOUNG - JOHNSON GROUP, INC.

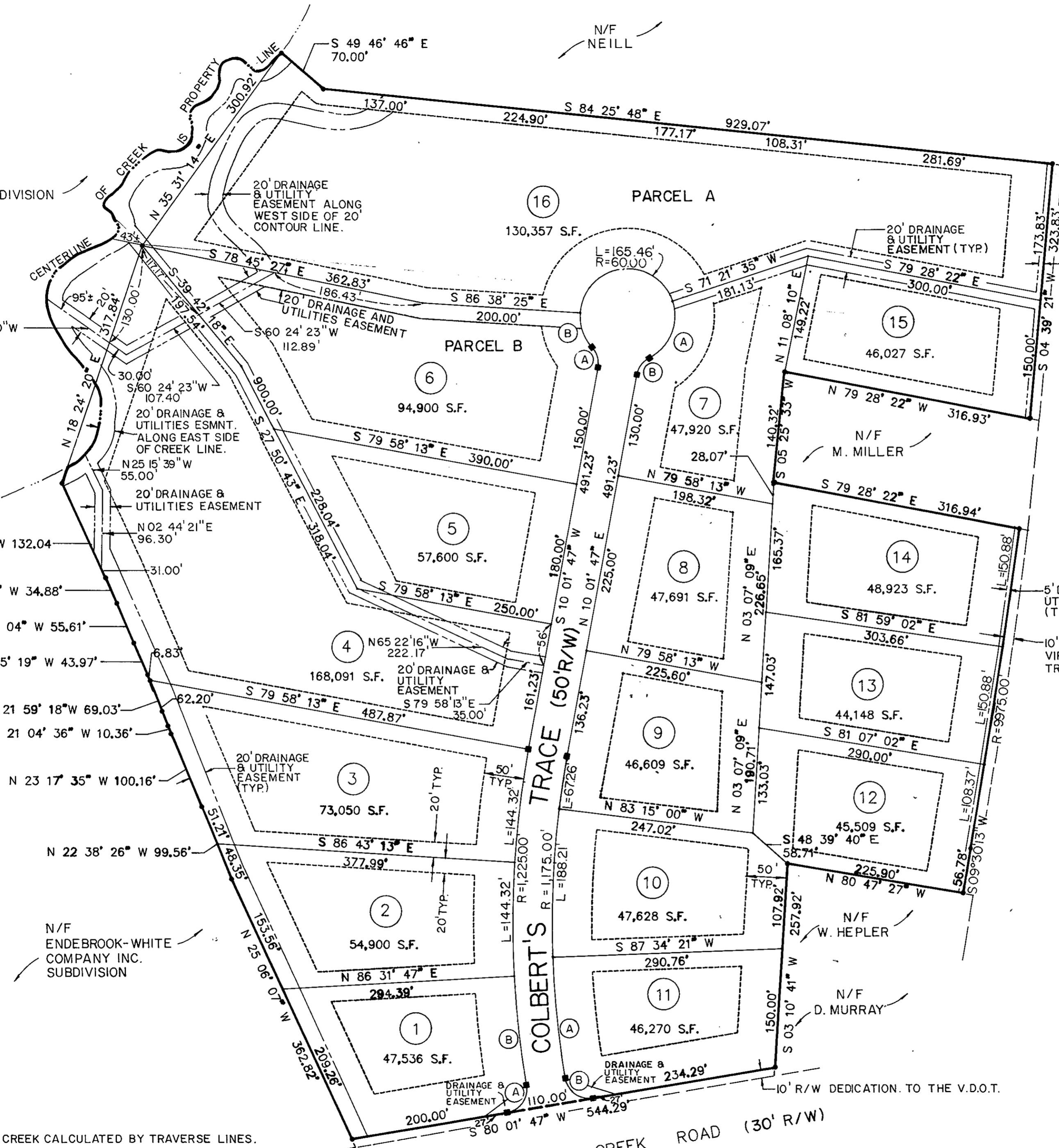
P.O. BOX 197

WILLIAMSBURG, VA. 23187

SCALE: 1" = 100' OCTOBER 15, 1987

SHEET 2 OF 2

MARLBANK COVE SUBDIVISION SECTION TWO



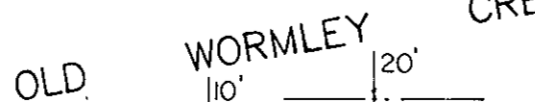
OLD WORMLEY CREEK ROAD (30' R/W)

COLBERT'S TRACE (50' R/W)

OLD WORMLEY CREEK ROAD (30' R/W)



NOTE: AREA ALONG CREEK CALCULATED BY TRAVERSE LINES.



LEGEND

- P.L. EASEMENTS SHOWN THUS ARE HEREBY CONVEYED TO THE COUNTY OF YORK FOR DRAINAGE & UTILITIES
- P.L. MINIMUM BUILDING SETBACK LINE SHOWN THUS
- P.L. CONCRETE MONUMENTS SHOWN THUS
- P.L. IRON PIPES

APPROVED
YORK COUNTY BOARD OF SUPERVISORS

BY: *[Signature]*
PLAT APPROVING AGENT
DATE: *Nov 24 1987*

STATE OF VIRGINIA
COUNTY OF YORK
IN THE CLERK'S OFFICE OF THE CIRCUIT COURT FOR THE COUNTY OF YORK THE 29th DAY OF December, 1987
THIS MAP WAS PRESENTED & ADMITTED TO RECORD AS THE LAW DIRECTS IN PLAT BOOK 10, PAGE 446

TESTE: EDITH M. ELLIOTT, CLERK
CLERK
BY: Lathaine Bender, P.C.