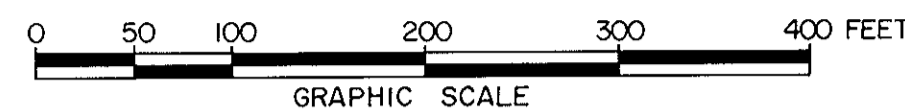


FAMILY
SUBDIVISION OF THE PROPERTY OF
DORIS LEE BARNES
A FAMILY TRANSACTION

GRAFTON DISTRICT COUNTY OF YORK, VIRGINIA
Scale: 1" = 100' August 28, 1987

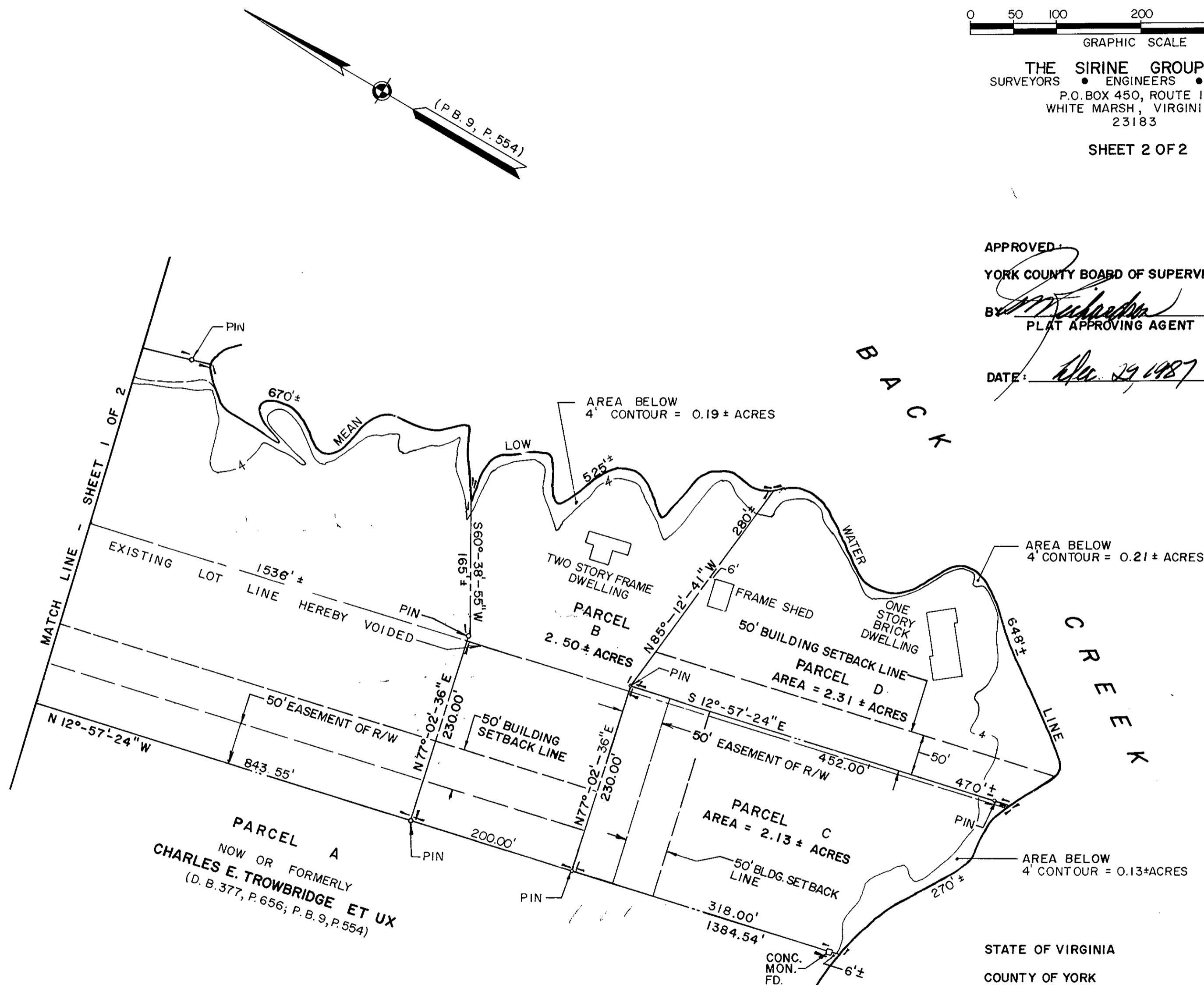


THE SIRINE GROUP, LTD.
SURVEYORS • ENGINEERS • PLANNERS
P.O. BOX 450, ROUTE 17
WHITE MARSH, VIRGINIA
23183

SHEET 2 OF 2

APPROVED:
YORK COUNTY BOARD OF SUPERVISORS
BY: *[Signature]*
PLAT APPROVING AGENT

DATE: *Dec 29 1987*



PARCEL A
NOW OR FORMERLY
CHARLES E. TROWBRIDGE ET UX
(D. B. 377, P. 656; P. B. 9, P. 554)

TOTAL AREA ENCOMPASSED WITHIN
THIS SUBDIVISION = 29.72 ± ACRES

STATE OF VIRGINIA
COUNTY OF YORK

IN THE CLERK'S OFFICE OF THE CIRCUIT COURT FOR THE
COUNTY OF YORK THE *29* DAY OF *December*, 1987
THIS MAP WAS PRESENTED AND ADMITTED TO RECORD AS THE
LAW DIRECTS IN PLAT BOOK *10*, PAGE *448*.

TESTE: *[Signature]*
CLERK

BY: *[Signature]*