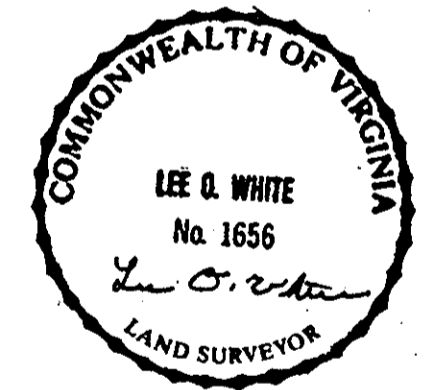
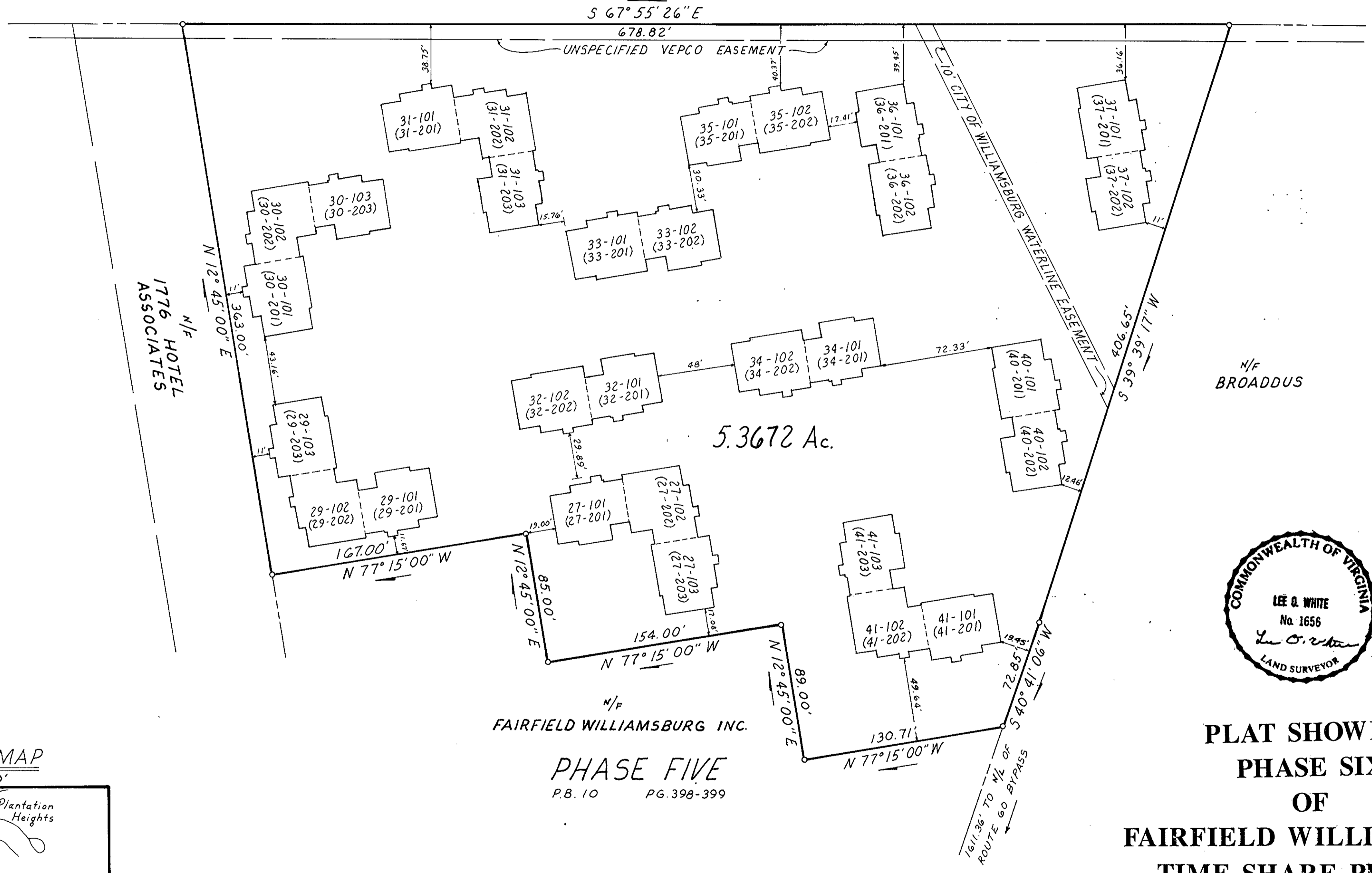


CARRS HILL ROAD

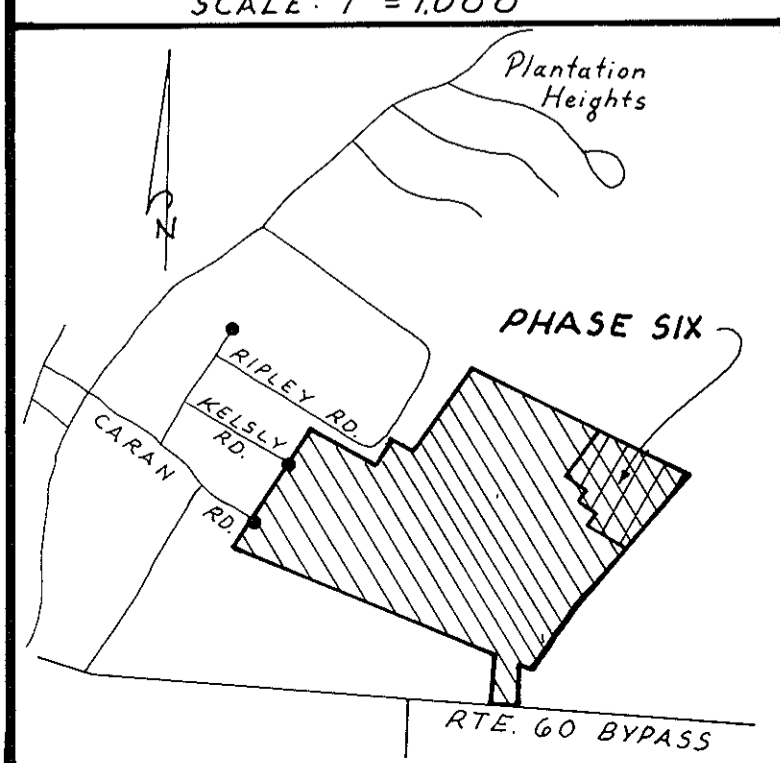


PLAT SHOWING PHASE SIX OF FAIRFIELD WILLIAMSBURG TIME SHARE PROJECT

BRUTON DISTRICT YORK COUNTY, VIRGINIA

SCALE: 1" = 50' AUGUST 12, 1988

VICINITY MAP
SCALE: 1" = 1,000'



Plat Book No. 10 Page 576

Filed in the Clerk's Office, Circuit Court, York Co., Va.
the 9th day of September 1988

Edith M. Elliott, Clerk
Catherine [Signature]

Dewberry & Davis
Architects
Engineers
Planners
Surveyors

Commerce Center
2701 Emerywood Parkway, Suite 106
Richmond, VA 23229
804 282-0462

Fairfax, VA Manassas, VA Baltimore, MD Gaithersburg, MD Richmond, VA
Annapolis, MD Raleigh, NC Manassas, VA Danville, VA Landover, MD Woodbridge, VA