

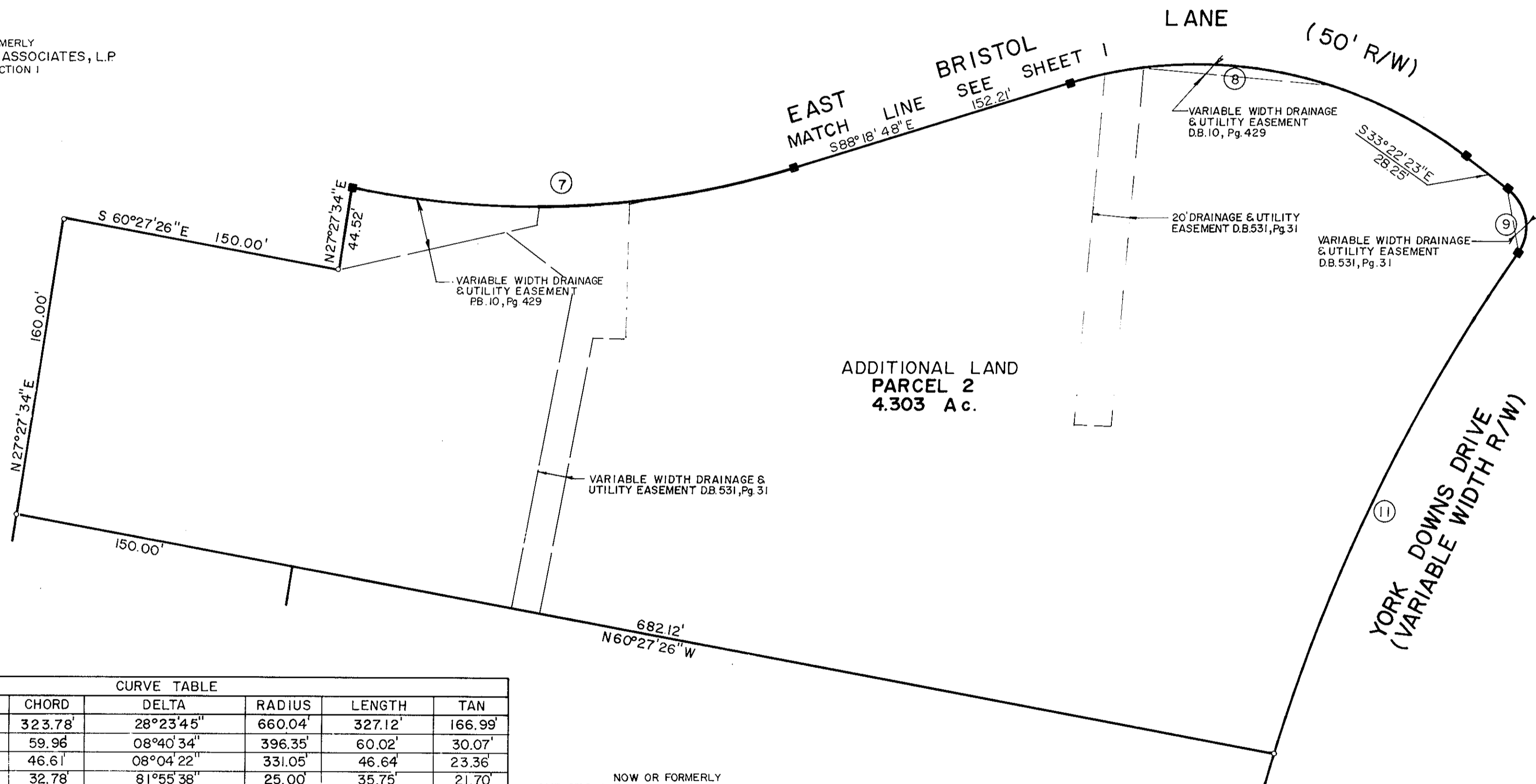
THIS PLAT IS AN EXHIBIT TO THE DECLARATION OF YORKSHIRE DOWNS CONDOMINIUM, DATED MARCH 1, 1988 AND RECORDED IN DEED BOOK _____, PAGE _____.

YORKSHIRE DOWNS
CONDOMINIUM
PHASE I
LOCATED IN
YORK COUNTY, VIRGINIA

TA
Talbot & Associates, Ltd.
Architects, Engineers, Planners, Surveyors, Landscape Architects
100 Landmark Square, Virginia Beach, Va. 23452
739 Thimble Shoals Blvd., Suite 1006, Newport News, Va. 23606

SCALE: 1" = 50' SHEET 2 OF 3 OCTOBER 20, 1988

NOW OR FORMERLY
CHRISTOPHER YORK ASSOCIATES, L.P.
PHASE I, SECTION 1

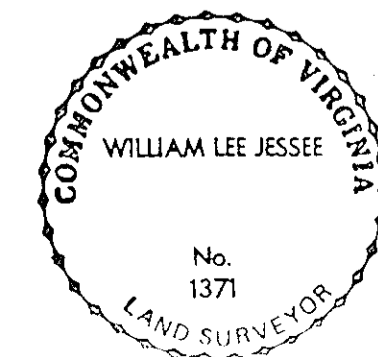


NOW OR FORMERLY
CHRISTOPHER YORK ASSOCIATES, L.P.
PARCEL 'C'

CURVE TABLE

NO.	CH. BEARING	CHORD	DELTA	RADIUS	LENGTH	TAN
C01	S21°22'45"W	323.78'	28°23'45"	660.04'	327.12'	166.99'
C02	S68°49'48"W	59.96'	08°40'34"	396.35'	60.02'	30.07'
C03	S60°39'48"W	46.61'	08°04'22"	331.05'	46.64'	23.36'
C04	S74°20'12"E	32.78'	81°55'38"	25.00'	35.75'	21.70'
C05	S60°50'35"E	262.37'	54°56'24"	284.39'	272.70'	147.86'
C06	S76°59'37"E	164.88'	22°38'22"	420.00'	165.96'	84.07'
C07	S73°45'06"E	236.33'	29°07'23"	470.00'	238.90'	122.09'
C08	S60°50'35"E	216.24'	54°56'24"	234.39'	224.76'	121.86'
C09	S10°09'49"W	34.44'	87°04'25"	25.00'	37.99'	23.75'
C10	S55°09'49"W	48.74'	02°55'35"	954.40'	48.75'	24.38'
C11	S44°46'08"W	296.36'	17°51'49"	954.40'	297.56'	150.00'
C12	S01°39'19"E	32.50'	15°14'07"	122.60'	32.60'	16.39'
C13	S68°56'02"W	48.89'	08°28'06"	331.05'	48.93'	24.51'

I WILLIAM LEE JESSEE, A DULY REGISTERED SURVEYOR DO HEREBY CERTIFY THAT THIS DRAWING IS ACCURATE (WITHIN NORMAL TOLERANCES) AND COMPLIES WITH SECTION 55-79.58(a) OF THE CONDOMINIUM ACT AND THAT THE UNITS SHOWN HEREON ARE SUBSTANTIALLY COMPLETED IN ACCORDANCE HEREWITH.



Plat Book No. 10 Page 596
Filed in the Clerk's Office, Circuit Court, York Co., Va.
the 20th day of October 1988
Teste:
Edith M. Elliott, Clerk
Karen D. Watkins, n.c.

DATE 10-20-88