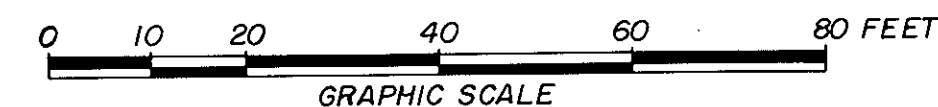
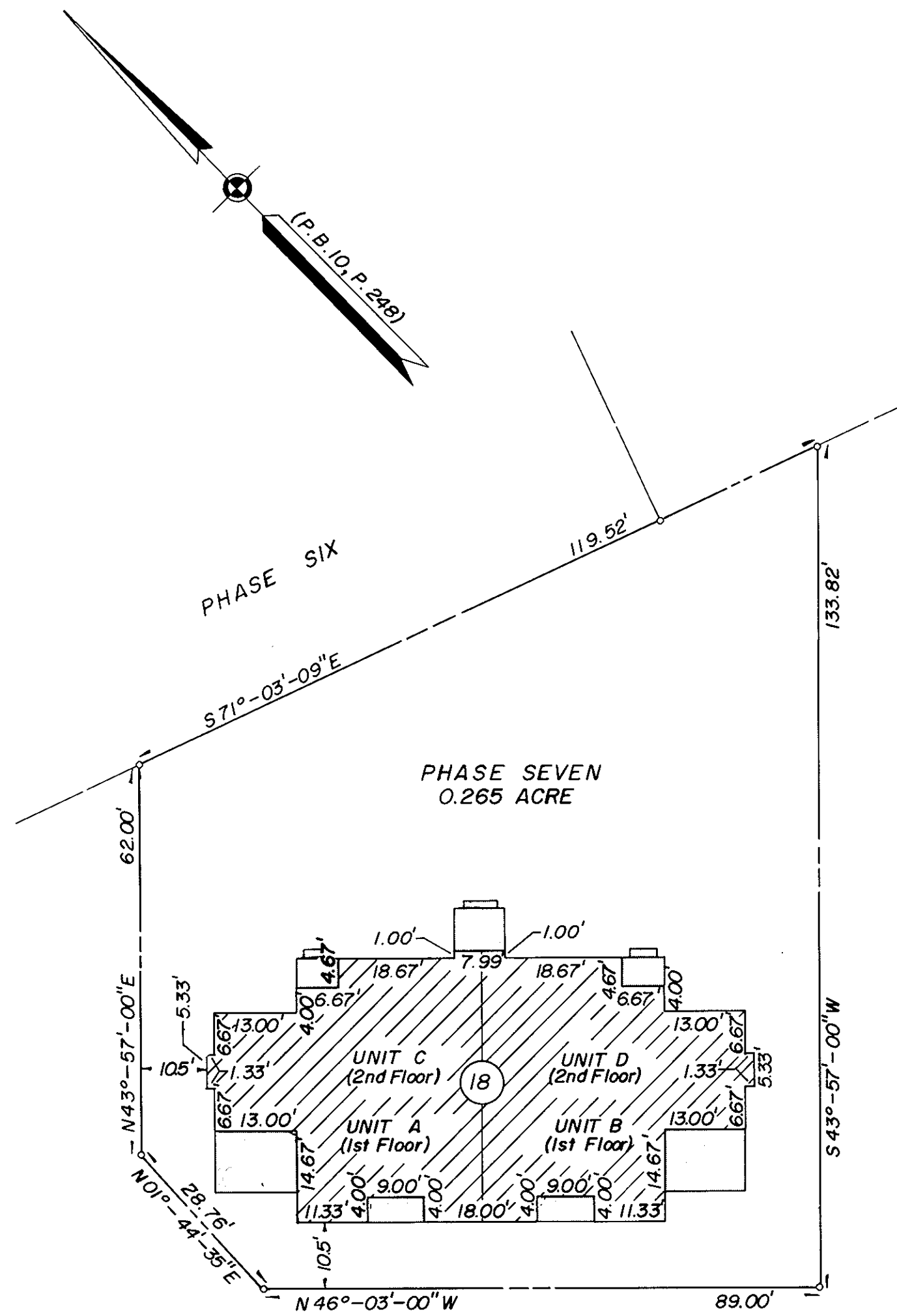


SHEET 2 OF 2
BURNT BRIDGE RUN CONDOMINIUM
 PHASE SEVEN
 GRAFTON DISTRICT COUNTY OF YORK, VIRGINIA
 SCALE 1" = 20' NOVEMBER 1, 1988



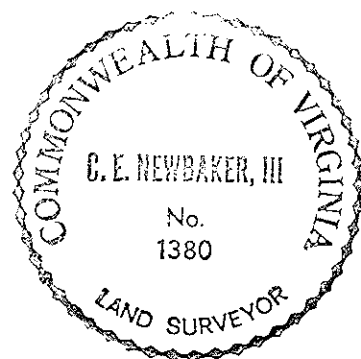
THE SIRINE GROUP, LTD.
 SURVEYORS • ENGINEERS • PLANNERS
 P. O. BOX 450, ROUTE 17
 WHITE MARSH, VIRGINIA
 23183



NOTES:

1. ALL BUILDING DIMENSIONS SHOWN HEREON ARE EXTERIOR DIMENSIONS AND ARE IN FEET
2. THE DESIGNATION OF FEE TITLE AREA IS SUPERSEDED BY THE DECLARATION AND IS NOT INTENDED TO IMPLY THAT EXTERIOR WALLS, BEARING WALLS AND OTHER COMMON ELEMENTS ARE FEE TITLE AREA.
3. I CERTIFY THAT THIS PLAT COMPLIES WITH THE PROVISIONS OF SUBSECTION (a) OF §55-79.58 OF THE CONDOMINIUM ACT AND THAT AND THAT ALL UNITS DEPICTED HEREON HAVE BEEN SUBSTANTIALLY COMPLETED.

SIGNED: C. E. Newbaker III
 C. E. NEWBAKER III



LEGEND

- FEE TITLE AREA
- COMMON ELEMENTS
- LIMITED COMMON ELEMENTS
- LIMIT OF AREA OR ELEMENTS

Plat Book No. 10 Page 623

Filed in the Clerk's Office, Circuit Court, York County, Virginia
 the 7th day of December 1988
 Teste:

Edith M. Elliott, Clerk
Carol D. Rosselmin D. C.