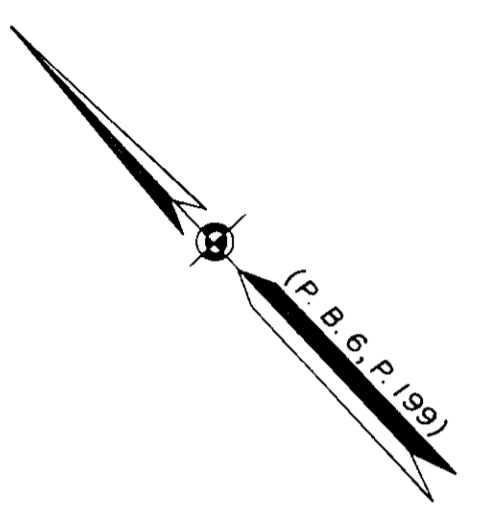


THE UNDERSIGNED CERTIFIES THAT THIS PLAT IS ACCURATE AND COMPLIES WITH THE PROVISIONS OF THE CODE OF VIRGINIA SECTION 55-79.58 (a) AND ALL UNITS DEPICTED HEREON HAVE BEEN SUBSTANTIALLY COMPLETED.

SIGNED: C. E. Newbaker III DATE: 11-21-88
 C. E. NEWBAKER III, L.S.



NOTES:
 1. ALL BUILDING DIMENSIONS SHOWN HEREON ARE EXTERIOR DIMENSIONS AND ARE IN FEET.
 PARCEL B = 17.630 ACRES



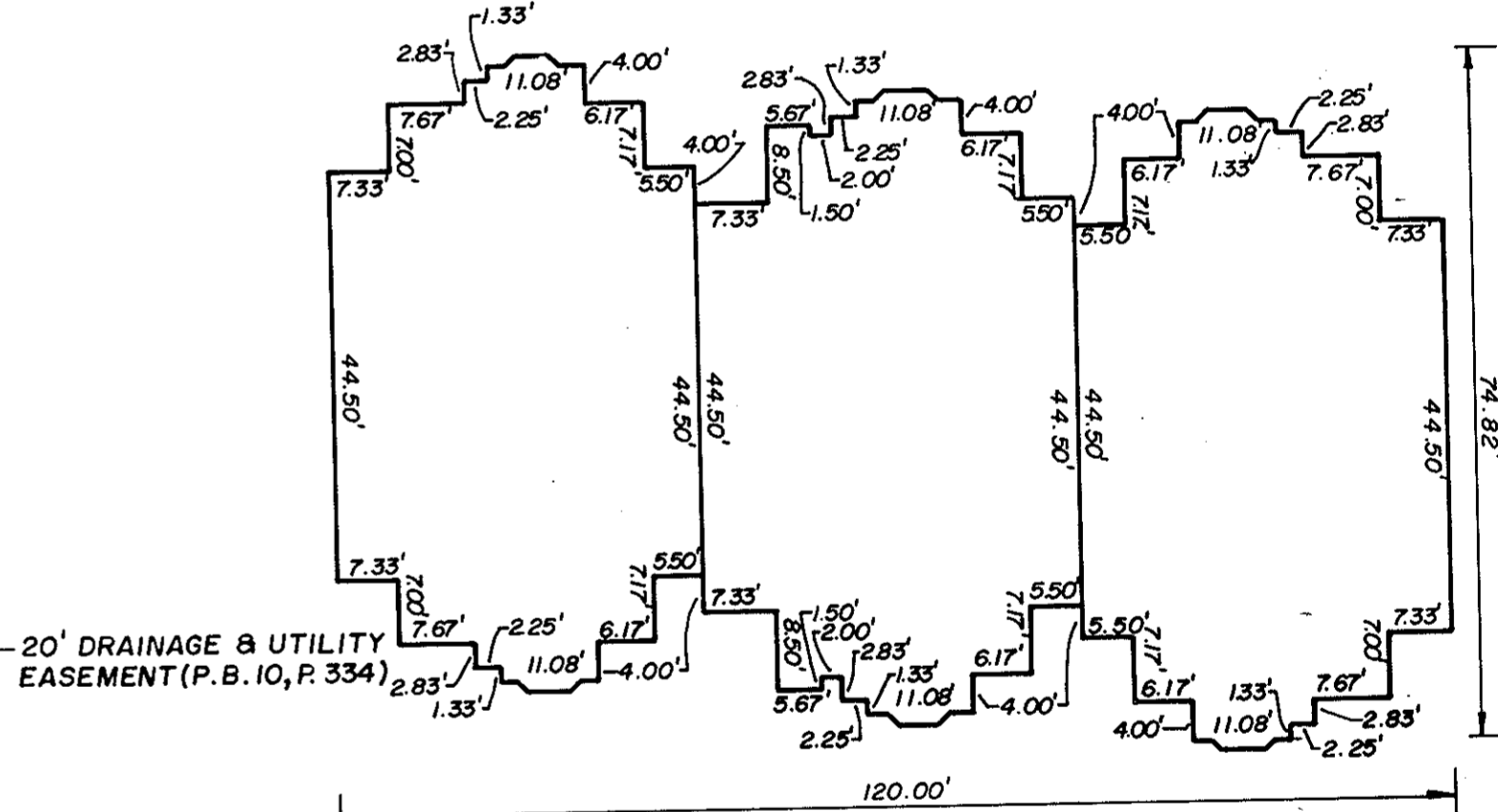
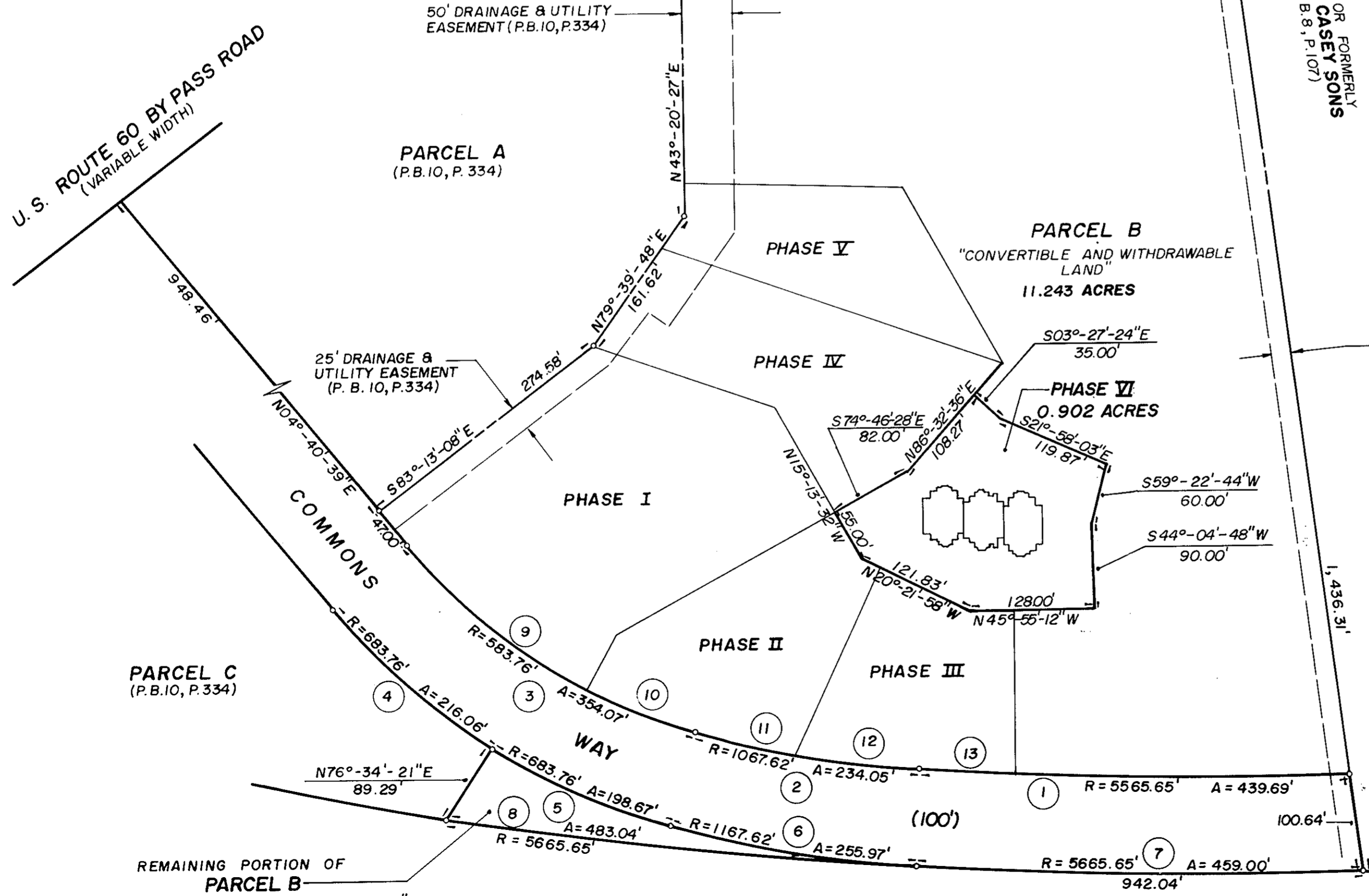
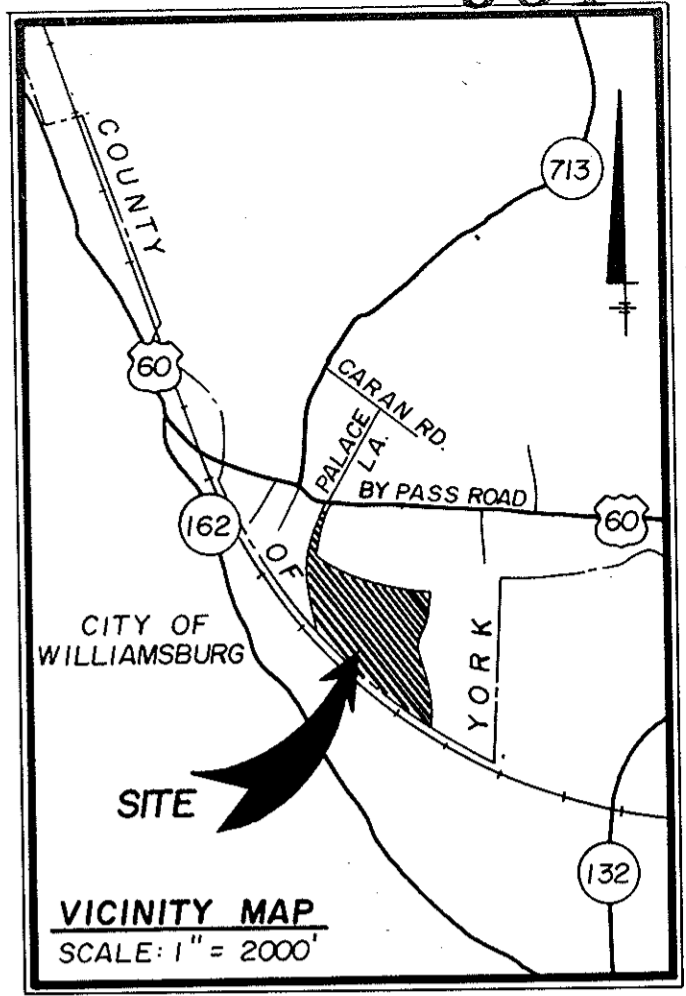
STATE OF VIRGINIA
 COUNTY OF YORK

IN THE CLERK'S OFFICE OF THE CIRCUIT COURT FOR THE COUNTY OF YORK THE 27th DAY OF Nov, 1988 THIS MAP WAS PRESENTED AND ADMITTED TO RECORD AS THE LAW DIRECTS IN PLAT BOOK 10, PAGE 631.

TESTE: EDITH M. ELLIOTT, CLERK
 CLERK

BY: Carol W. ... 4:24 P.M.

CURVE DATA TABLE				
NO.	RADIUS	DELTA	TANGENT	ARC
1	5565.65'	04°-31'-35"	219.96'	439.69'
2	1067.62'	12°-33'-39"	117.50'	234.05'
3	583.76'	34°-45'-06"	182.67'	354.07'
4	683.76'	18°-06'-16"	108.94'	216.06'
5	683.76'	16°-38'-48"	100.03'	198.67'
6	1167.62'	12°-33'-39"	128.50'	255.97'
7	5665.65'	04°-38'-30"	229.62'	459.00'
8	5665.65'	04°-53'-06"	241.67'	483.04'
9	583.76'	22°-51'-55"	118.05'	232.97'
10	583.76'	11°-53'-11"	60.77'	121.11'
11	1067.62'	05°-32'-25"	51.66'	103.23'
12	1067.62'	07°-01'-14"	65.49'	130.82'
13	5565.65'	00°-55'-36"	45.00'	90.00'



THIS PROPERTY AS DEPICTED ON THIS PLAT DOES NOT VIOLATE THE PROVISIONS OF THE YORK COUNTY SUBDIVISION ORDINANCE

SIGNED: S. Mark Carter
 TITLE: DIR. OF PLANNING & COM. DEV.
 DATE: NOVEMBER 23, 1988

EXHIBIT 6
 PHASE VI
 SHEET 1 OF 4
 PLAT OF

WILLIAMSBURG COMMONS CONDOMINIUMS

FOR
 WILLIAMSBURG COMMONS, INC.
 A VIRGINIA CORPORATION
 BRUTON DISTRICT COUNTY OF YORK, VIRGINIA
 SCALE: 1" = 100' NOVEMBER 16, 1988



THE SIRINE GROUP, LTD.
 SURVEYORS • ENGINEERS • PLANNERS
 P.O. BOX 450, ROUTE 17
 WHITE MARSH, VIRGINIA
 23183