

THE UNDERSIGNED CERTIFIES THAT THIS PLAN IS ACCURATE AND COMPLIES WITH THE PROVISIONS OF THE CODE OF VIRGINIA SECTION 55-79.58 (b) AND ALL UNITS DEPICTED HEREON HAVE BEEN SUBSTANTIALLY COMPLETED.

NOTES

I. ALL BUILDING DIMENSIONS SHOWN HEREON ARE EXTERIOR DIMENSIONS AND ARE IN FEET.

STATE OF VIRGINIA
COUNTY OF YORK

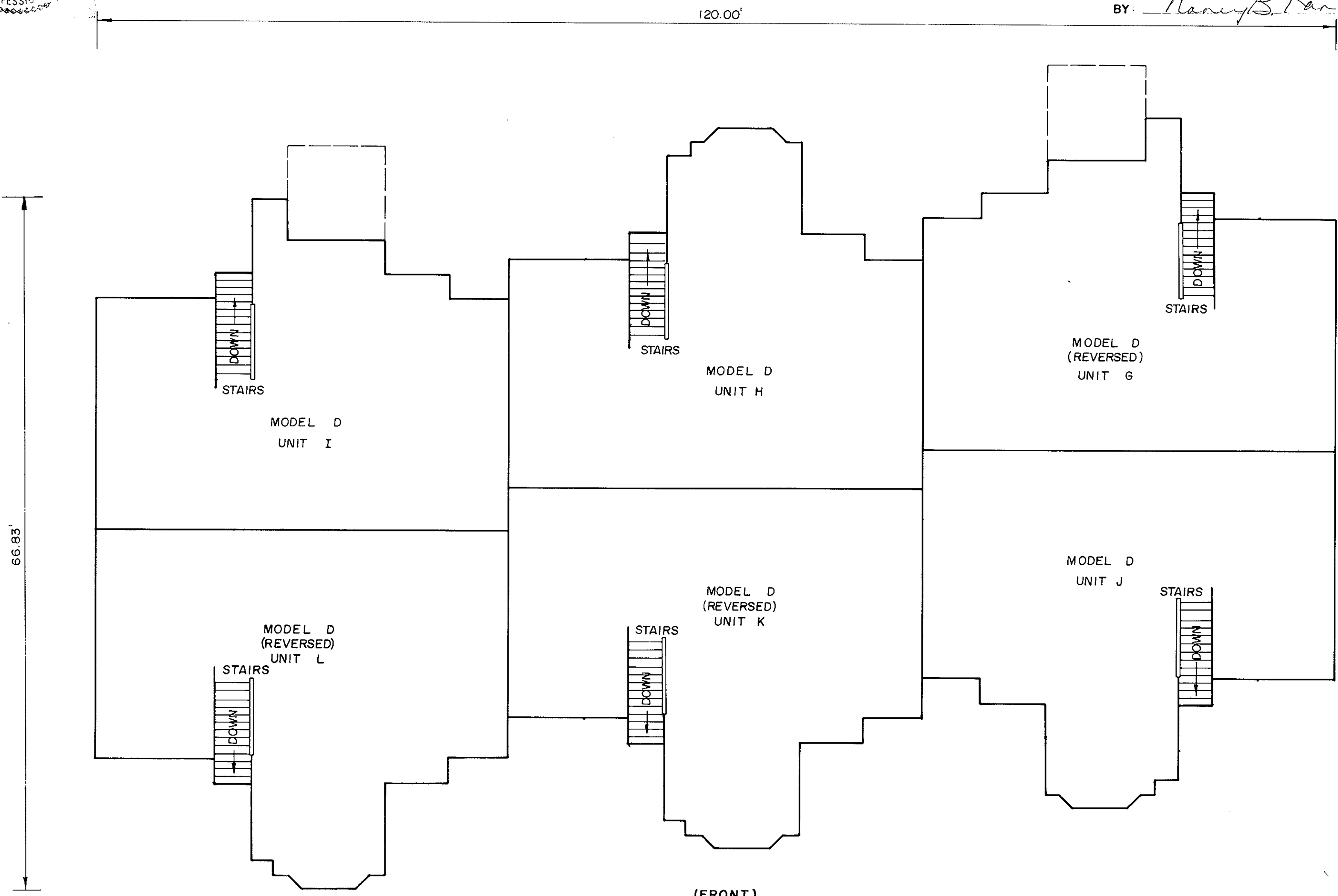
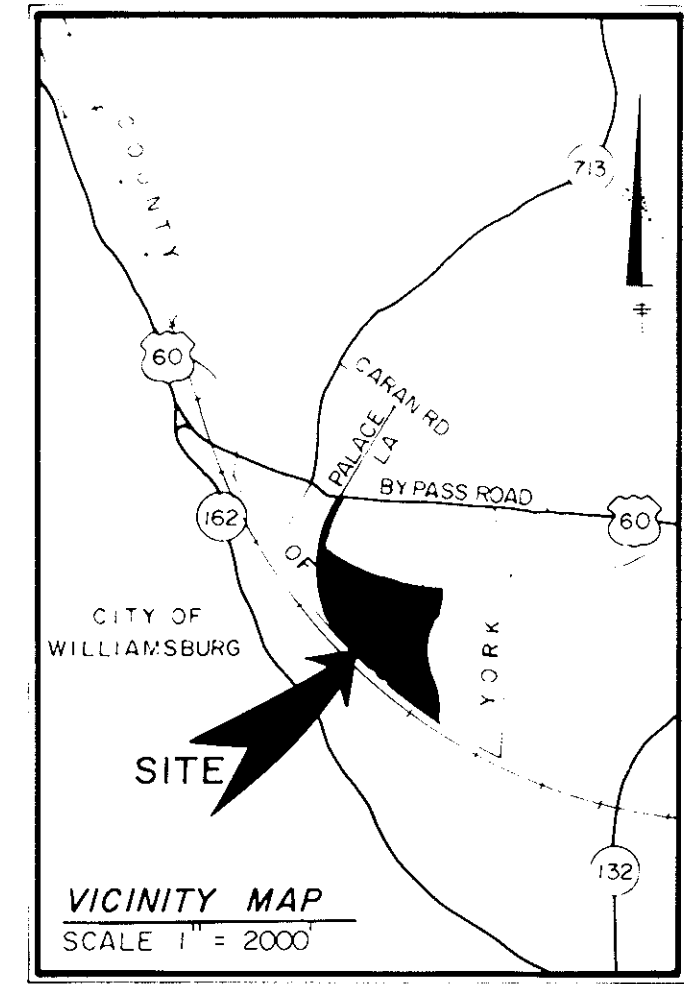
IN THE CLERK'S OFFICE OF THE CIRCUIT COURT FOR THE COUNTY OF YORK THE 21st DAY OF February, 1989 THIS MAP WAS PRESENTED AND ADMITTED TO RECORD AS THE LAW DIRECTS IN PLAT BOOK 11, PAGE 21.

TESTE: EDITH M. ELLIOTT, CLERK
CLERK 10:03A.M.

BY: Nancy Stone, L.C.

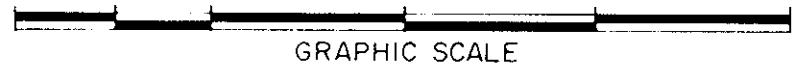


SIGNED: *Kenton B. Patrick* DATE: *1/22/88*
KENTON B. PATRICK, P. E.



(FRONT)
SECOND FLOOR
BUILDING 14

Exhibit A
PHASE VII
SHEET 4 OF 4
PLAT OF
WILLIAMSBURG COMMONS CONDOMINIUMS
FOR
WILLIAMSBURG COMMONS, INC.,
A VIRGINIA CORPORATION
BRUTON DISTRICT COUNTY OF YORK, VIRGINIA
SCALE 1/8" = 1'-0" NOVEMBER 16, 1988



THE SIRINE GROUP, LTD.
SURVEYORS • ENGINEERS • PLANNERS
P.O. BOX 450, ROUTE 17
WHITE MARSH, VIRGINIA 23183