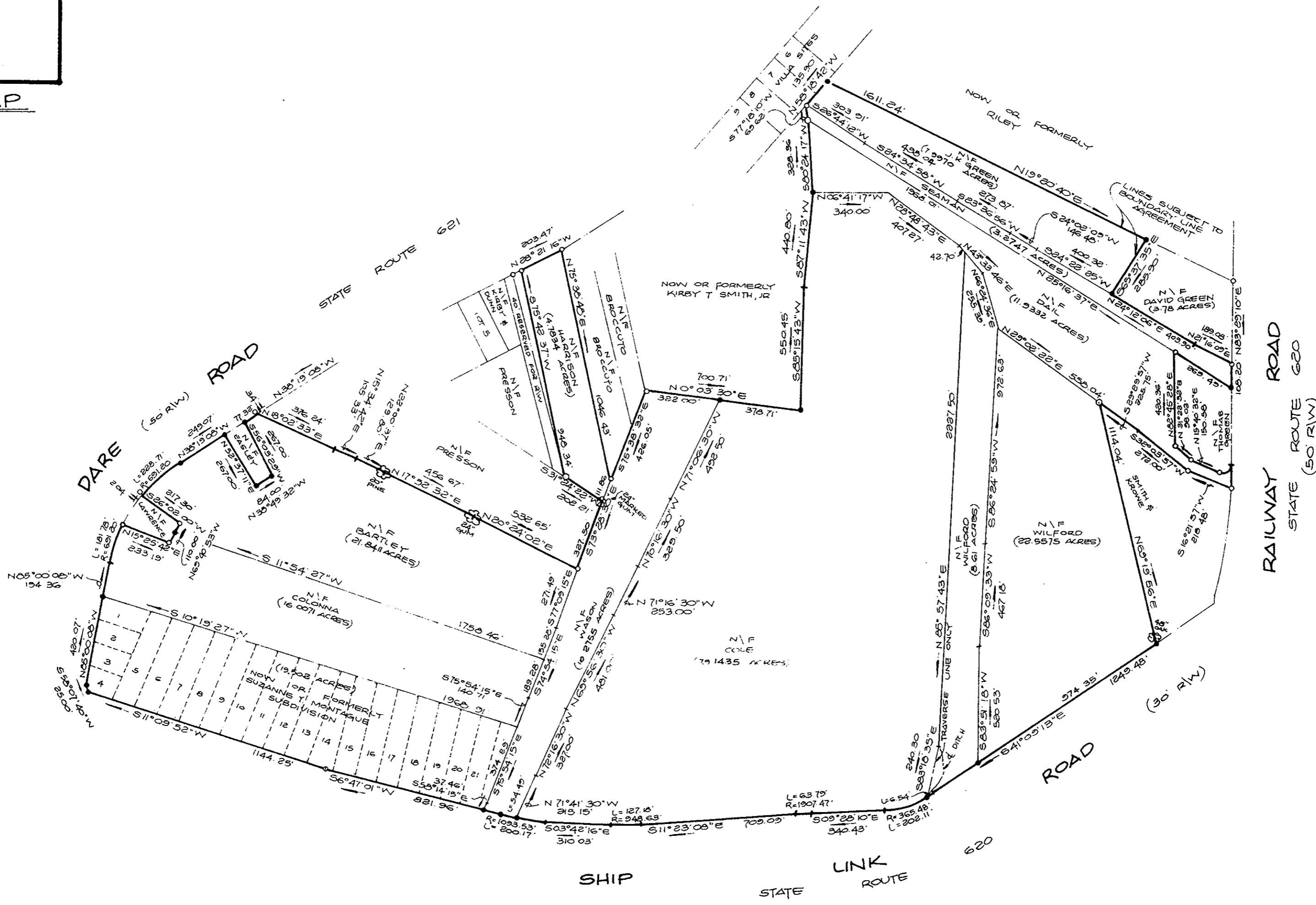


VICINITY MAP
SCALE: 1" = 2,000'



SYMBOLS

- DENOTES IRON PIPE FOUND
- DENOTES IRON PIPE SET
- DENOTES IRON ROD FOUND
- DENOTES AXLE FOUND

REFERENCES :

- PB 1, PG 458
- DB 373, PG 113
- PB 8, PG 95
- DB 498, PG 787
- PB 1, PG 320
- DB 260, PG 512
- DB 433, PG 31
- PB 8, PG 151
- DB 208, PG 137
- DB 65, PG 276
- DB 325, PG 339
- DB 301, PG 814
- DB 256, PG 431
- PB 7, PG 48
- PB 5, PG 158
- PB 9, PG 177
- PB 5, PG 211
- DB 489, PG 652
- PB 8, PG 236

COMPILED PLAT
OF VARIOUS PROPERTIES
LOCATED AT DARE ROAD,
SHIP LINK ROAD & RAILWAY
ROAD CONTAINING A TOTAL OF
205.9250 ACRES
COUNTY OF YORK, VA.
SCALE: 1" = 400' DATE: 16 FEB. 1989



DAVIS & ASSOCIATES
LAND SURVEYOR - PLANNER
4033 GEORGE WASHINGTON
MEMORIAL HIGHWAY
GRAFTON, VIRGINIA, 23692

Plat Book No. 1111 Page 321
Filed in the Clerk's Office, Circuit Court, York Co., VA.
the 27th day of March 1989
Teste:
Edith M. Elliott, Clerk
Carol Rosselmeier D.C.