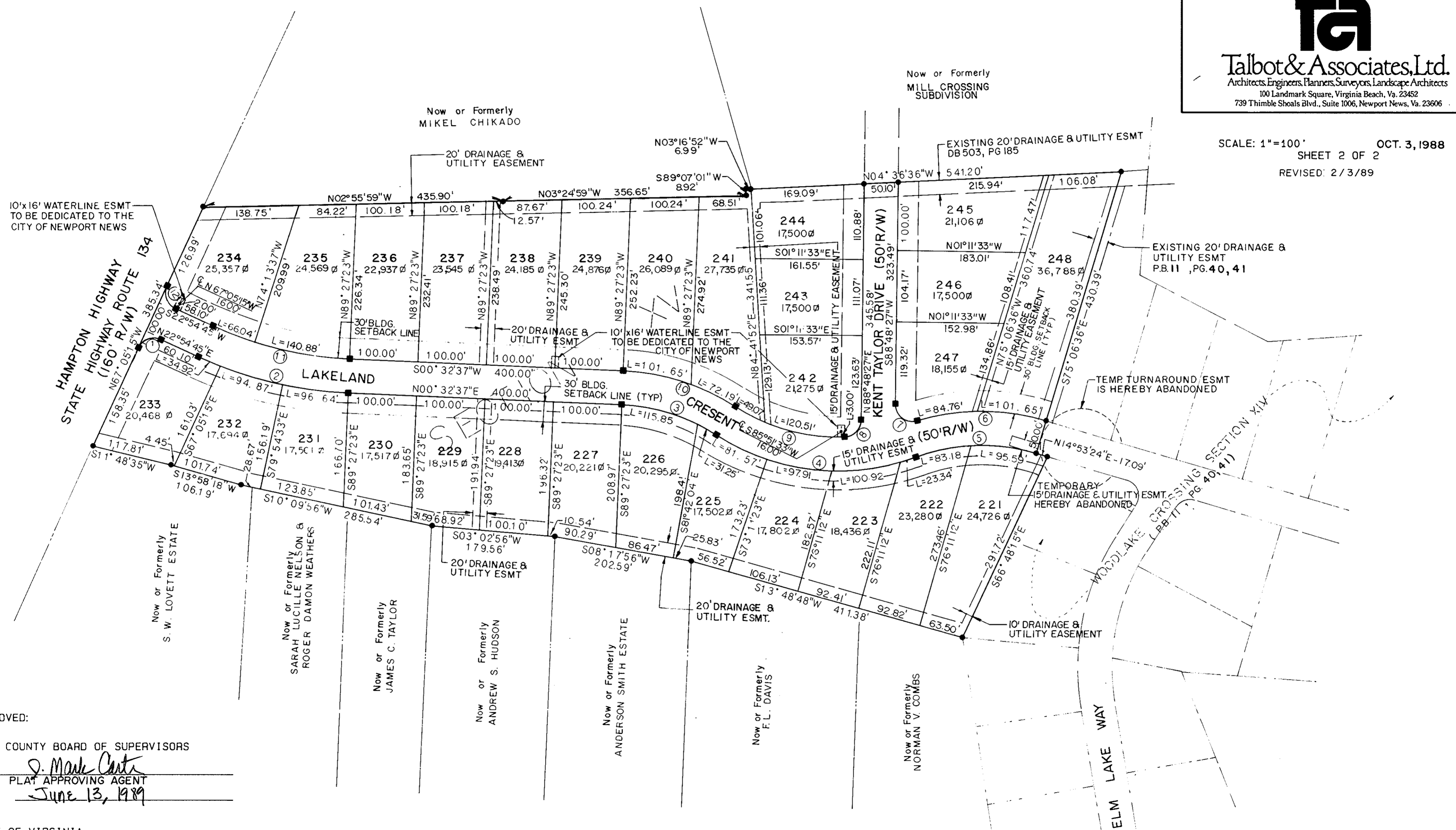
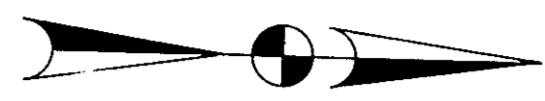


SUBDIVISION
OF
WOODLAKE CROSSING
SECTION XV
COUNTY OF YORK, VIRGINIA

ta
Talbot & Associates, Ltd.
Architects, Engineers, Planners, Surveyors, Landscape Architects
100 Landmark Square, Virginia Beach, Va. 23452
739 Thimble Shoals Blvd., Suite 1006, Newport News, Va. 23606

SCALE: 1"=100' OCT. 3, 1988
SHEET 2 OF 2
REVISED: 2/3/89



APPROVED:
YORK COUNTY BOARD OF SUPERVISORS
BY: J. Mark Carter
PLAT APPROVING AGENT
DATE: JUNE 13, 1989

STATE OF VIRGINIA
COUNTY OF YORK
IN THE CLERK'S OFFICE OF THE CIRCUIT
COURT FOR THE COUNTY OF YORK THE 15th
DAY OF JUNE, 1989 THIS MAP WAS
PRESENTED AND ADMITTED TO RECORD AS THE
LAW DIRECTS IN PLAT BOOK 11, PAGE 18

TESTE: NANCY B. KAAS CLERK
BY: KAREN S. KELLY WATKINS, DE.

■ MONUMENT
● IRON PIN