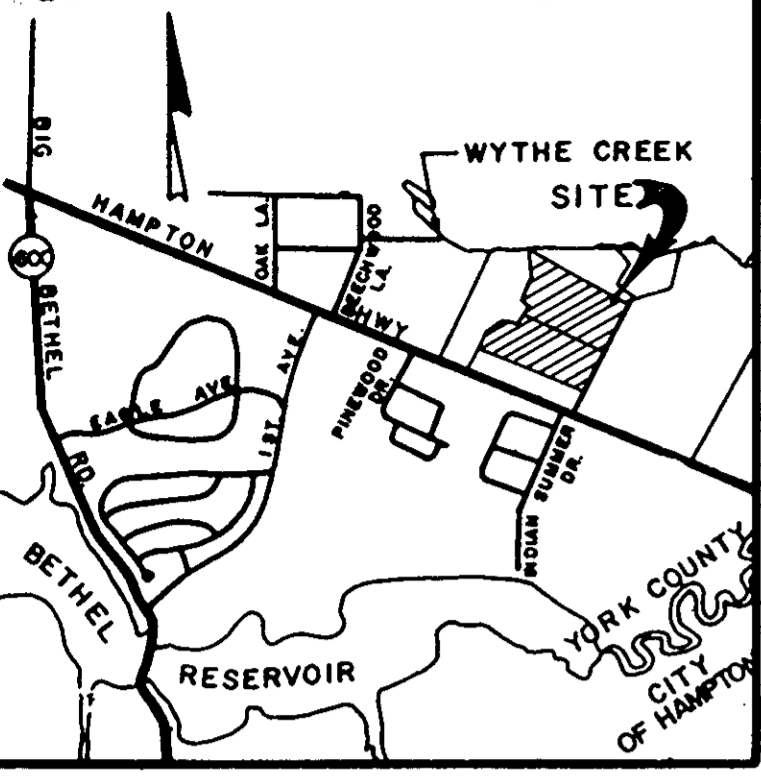


THIS PLAT IS AN EXHIBIT TO THE DECLARATION OF YORKSHIRE DOWNS CONDOMINIUM, DATED MARCH 1, 1989 AND RECORDED IN DEED BOOK \_\_\_\_\_, PAGE \_\_\_\_\_

YORKSHIRE DOWNS CONDOMINIUM PHASE VI LOCATED IN YORK COUNTY, VIRGINIA



SCALE: 1"=50' SHEET 1 OF 3 JULY 7, 1989



plat Book No. \_\_\_\_\_ Page 92

NOW OR FORMERLY CHRISTOPHER YORK ASSOCIATES, L.P. PHASE 2, SECTION I

TOTAL ACREAGE = 9.960

200' VEPCO EASEMENT D.B. 74, P.G. 295

PROPOSED VARIABLE WIDTH DRAINAGE & UTILITY EASEMENT

THE PLATTING OF THE LAND HEREON SHOWN IS WITH THE FREE CONSENT AND IN ACCORDANCE WITH THE DESIRE OF THE UNDERSIGNED OWNER. LANDS END ASSOCIATES, A VIRGINIA LIMITED PARTNERSHIP BY P.H.P. ENTERPRISES INC., A VIRGINIA CORPORATION GENERAL PARTNER

BY: PHP ENTERPRISES INC., GENERAL PARTNER

STATE OF VIRGINIA CITY OF NEWPORT NEWS I, Sandra D. Parler, A NOTARY PUBLIC IN AND FOR THE CITY AND STATE AFORESAID DO HEREBY CERTIFY THAT THE ABOVE NAMED PERSON WHOSE NAME IS SIGNED TO THE FOREGOING WRITING HAS ACKNOWLEDGED THE SAME BEFORE ME IN MY CITY AND STATE AFORESAID.

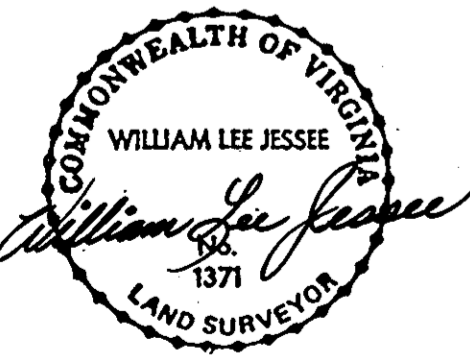
GIVEN UNDER MY HAND THIS 19th DAY OF July 1989.

Sandra D. Parler NOTARY PUBLIC

MY COMMISSION EXPIRES: 5-24-92

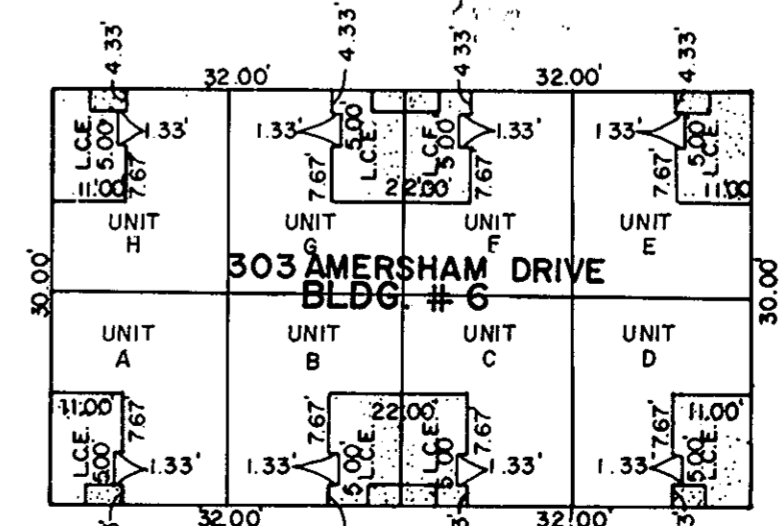
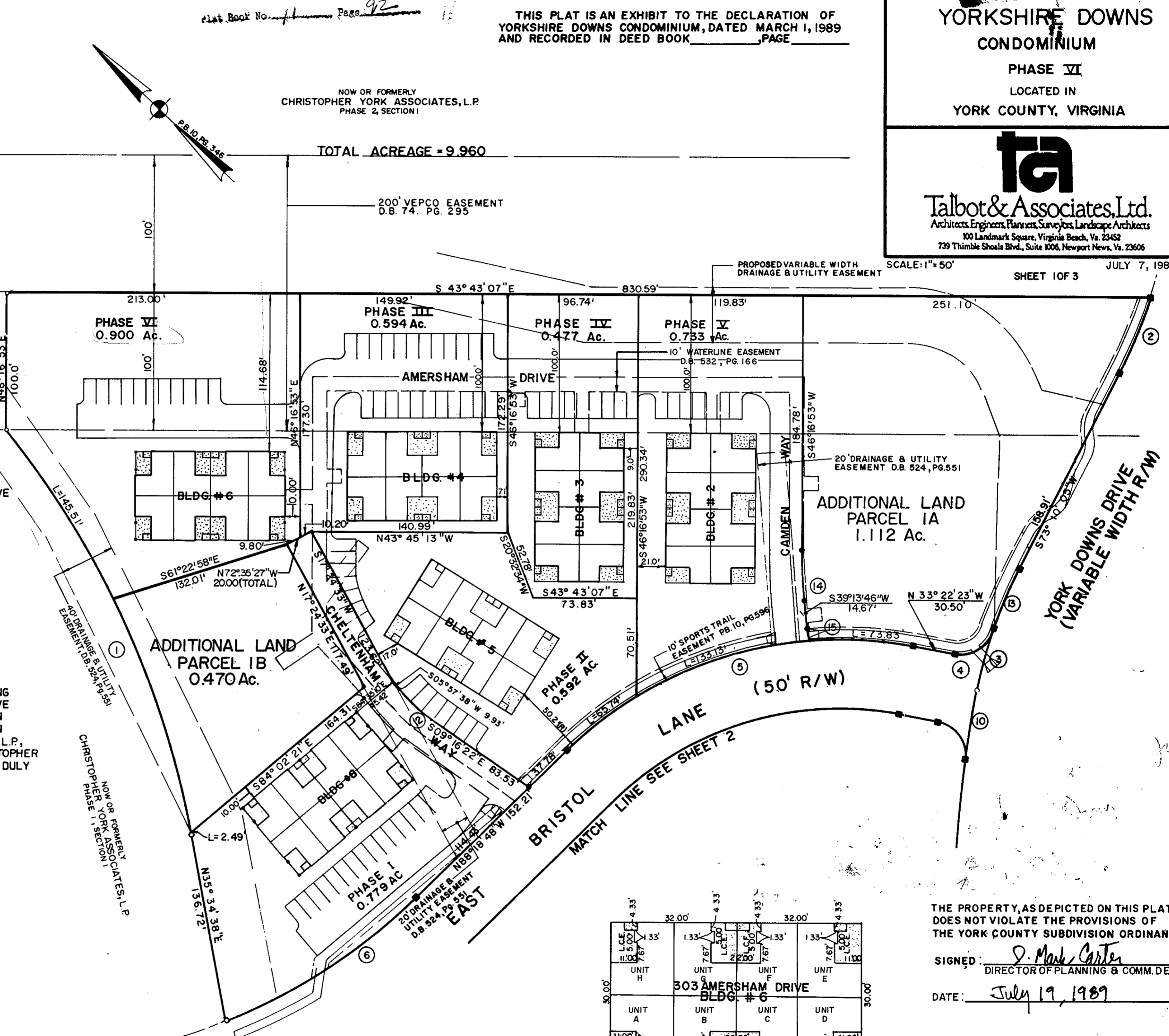
TO THE BEST OF MY KNOWLEDGE AND BELIEF, ALL THE REQUIREMENTS AS SET FORTH IN THE ORDINANCE FOR APPROVING PLATS OF SUBDIVISION IN THE COUNTY OF YORK, VIRGINIA HAVE BEEN COMPLIED WITH, INCLUDING A CLOSURE OF NOT LESS THAN 1"/10,000". THIS IS TO CERTIFY THAT THE LAND EMBRACED IN THIS SUBDIVISION IS IN THE NAME OF LANDS END ASSOCIATES, L.P., A VIRGINIA LIMITED PARTNER AND WAS ACQUIRED FROM CHRISTOPHER YORK ASSOCIATES, L.P. BY DEED DATED DEC. 9, 1987 AND DULY RECORDED IN THE CLERK'S OFFICE OF THE CIRCUIT COURT OF THE COUNTY OF YORK, VIRGINIA, IN DEED BOOK 506 PAGE 301.

William Lee Jessee WILLIAM LEE JESSEE, LAND SURVEYOR, NO. 1371



I, WILLIAM LEE JESSEE, A DULY REGISTERED SURVEYOR DO HEREBY CERTIFY THAT THIS DRAWING IS ACCURATE (WITHIN NORMAL TOLERANCES) AND COMPLIES WITH SECTION 55-79.58(a) OF THE CONDOMINIUM ACT AND THAT THE UNITS SHOWN HEREON ARE SUBSTANTIALLY COMPLETED IN ACCORDANCE HERewith.

William Lee Jessee, DATE 7-11-89



AMERSHAM DRIVE ALL UNITS DEPICTED HEREON ARE SAME UNIT TYPE AS SHOWN ON UNIT DIMENSION PLAN.

THE PROPERTY, AS DEPICTED ON THIS PLAT DOES NOT VIOLATE THE PROVISIONS OF THE YORK COUNTY SUBDIVISION ORDINANCE.

SIGNED: D. Mark Carter DIRECTOR OF PLANNING & COMM. DEV.

DATE: July 19, 1989

Filed in the Clerk's Office, Circuit Court, York Co., Va. the 20th day of July 1989

Tests: Nancy B. Kane, Clerk [Signature]

L.C.E. - LIMITED COMMON ELEMENT