

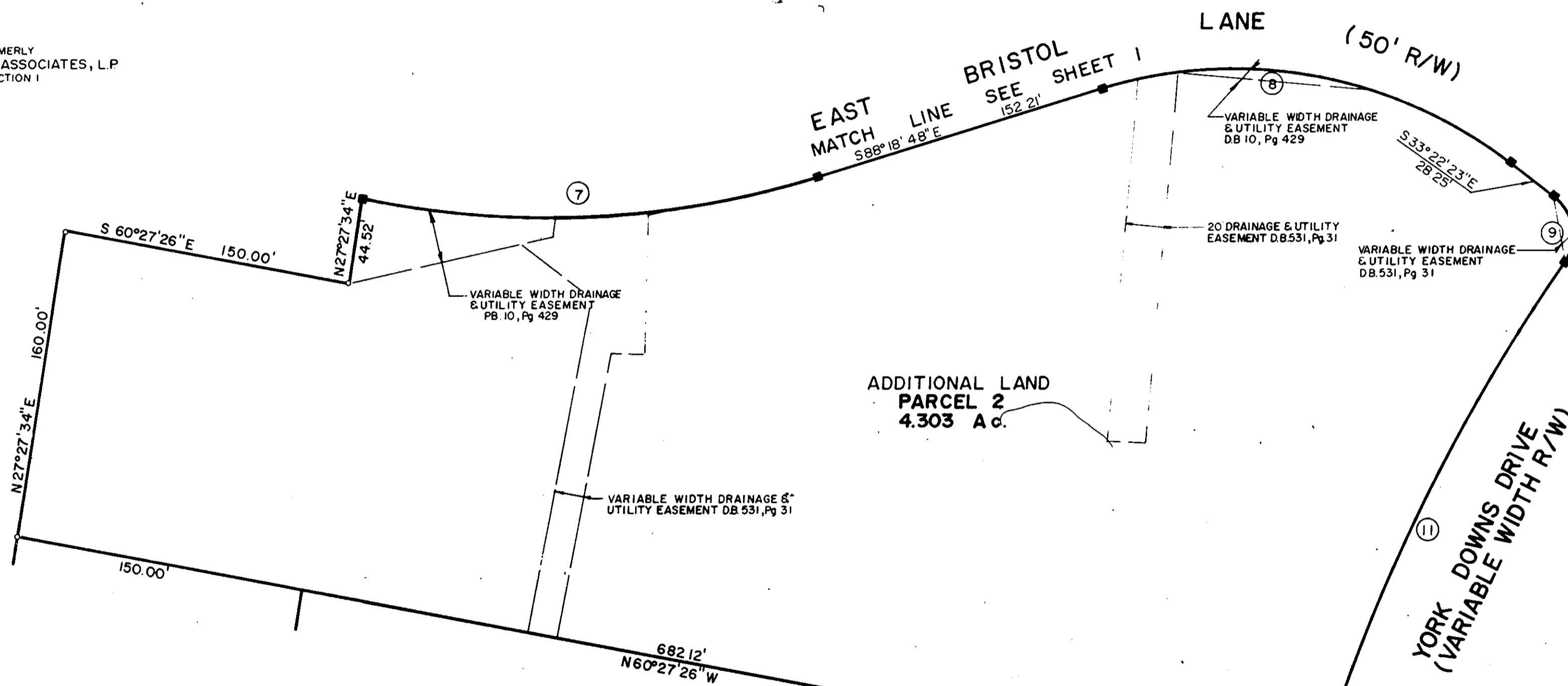
THIS PLAT IS AN EXHIBIT TO THE DECLARATION OF YORKSHIRE DOWNS CONDOMINIUM, DATED MARCH 1, 1988 AND RECORDED IN DEED BOOK \_\_\_\_\_, PAGE \_\_\_\_\_

**YORKSHIRE DOWNS**  
**CONDOMINIUM**  
 PHASE VIII  
 LOCATED IN  
 YORK COUNTY, VIRGINIA

**ta**  
**Talbot & Associates, Ltd.**  
 Architects, Engineers, Planners, Surveyors, Landscape Architects  
 100 Landmark Square, Virginia Beach, Va. 23452  
 739 Thimble Shoals Blvd., Suite 1006, Newport News, Va. 23606

SCALE: 1"=50' SHEET 2 OF 3 OCTOBER 6, 1989

NOW OR FORMERLY  
 CHRISTOPHER YORK ASSOCIATES, L.P.  
 PHASE I, SECTION I



NOW OR FORMERLY  
 CHRISTOPHER YORK ASSOCIATES, L.P.  
 PARCEL 'C'

CURVE TABLE

NO.	CH. BEARING	CHORD	DELTA	RADIUS	LENGTH	TAN
C01	S21°22'45"W	323.78'	28°23'45"	660.04'	327.12'	166.99'
C02	S68°49'48"W	59.96'	08°40'34"	396.35'	60.02'	30.07'
C03	S60°39'48"W	46.61'	08°04'22"	331.05'	46.64'	23.36'
C04	S74°20'12"E	32.78'	81°55'38"	25.00'	35.75'	21.70'
C05	S60°50'35"E	262.37'	54°56'24"	284.39'	272.70'	147.86'
C06	S76°59'37"E	164.88'	22°38'22"	420.00'	165.96'	84.07'
C07	S73°45'06"E	236.33'	29°07'23"	470.00'	238.90'	122.09'
C08	S60°50'35"E	216.24'	54°56'24"	234.39'	224.76'	121.86'
C09	S10°09'49"W	34.44'	87°04'25"	25.00'	37.99'	23.75'
C10	S55°09'49"W	48.74'	02°55'35"	954.40'	48.75'	24.38'
C11	S44°46'08"W	296.36'	17°51'49"	954.40'	297.56'	150.00'
C12	S01°39'19"E	32.50'	15°14'07"	122.60'	32.60'	16.39'
C13	S68°56'02"W	48.89'	08°28'06"	331.05'	48.93'	24.51'

THIS PROPERTY AS DEPICTED ON THIS PLAT DOES NOT VIOLATE THE PROVISIONS OF THE YORK COUNTY SUBDIVISION ORDINANCE

SIGNED: *D. Max Carter*  
 TITLE: *DIR. OF PLANNING & DEVELOPMENT*  
 DATE: *November 13, 1989*

Deed Book No. 11 Page 131

I WILLIAM LEE JESSEE, A DULY REGISTERED SURVEYOR DO HEREBY CERTIFY THAT THIS DRAWING IS ACCURATE (WITHIN NORMAL TOLERANCES) AND COMPLIES WITH SECTION 55-79.58(a) OF THE CONDOMINIUM ACT AND THAT THE UNITS SHOWN HEREON ARE SUBSTANTIALLY COMPLETED IN ACCORDANCE HEREWITH.

*William Lee Jessee*, DATE 11-2-89

Filed in the Clerk's Office, Circuit Court, York Co., Va. the 14th day of November 1989

*Nancy B. Kane*, Clerk