

THIS PLAT IS AN EXHIBIT TO THE DECLARATION OF YORKSHIRE DOWNS CONDOMINIUM, DATED MARCH 1, 1988 AND RECORDED IN DEED BOOK 11, PAGE 134

PLAT NANCY B. KANE, CLERK  
by Carol Drosselmaier

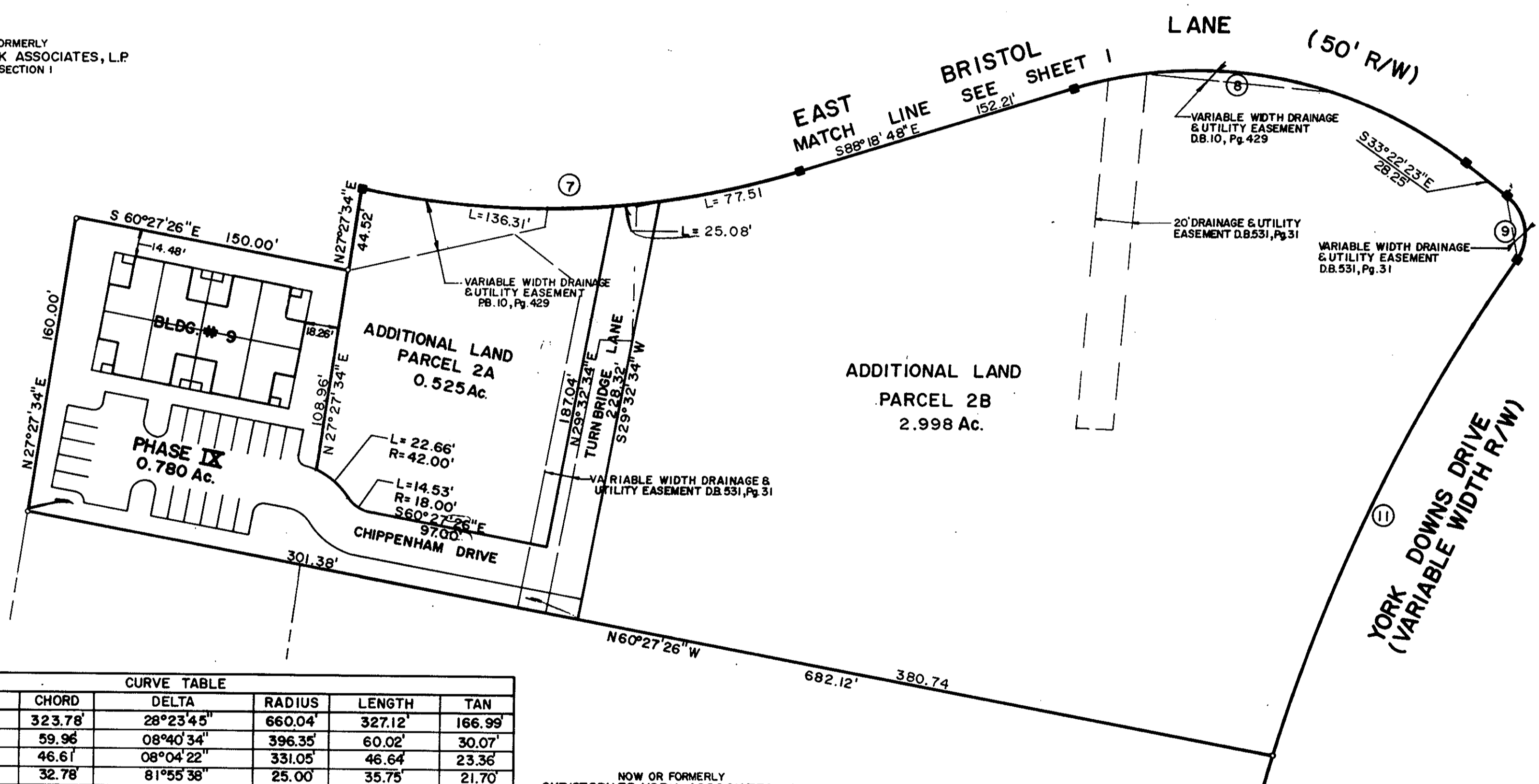
**YORKSHIRE DOWNS**  
CONDOMINIUM  
PHASE IX  
LOCATED IN  
YORK COUNTY, VIRGINIA



**Talbot & Associates, Ltd.**  
Architects, Engineers, Planners, Surveyors, Landscape Architects  
100 Landmark Square, Virginia Beach, Va. 23452  
739 Thimble Shoals Blvd., Suite 1006, Newport News, Va. 23606

SCALE: 1" = 50' SHEET 2 OF 3 OCTOBER 6, 1989

NOW OR FORMERLY  
CHRISTOPHER YORK ASSOCIATES, L.P.  
PHASE I, SECTION 1

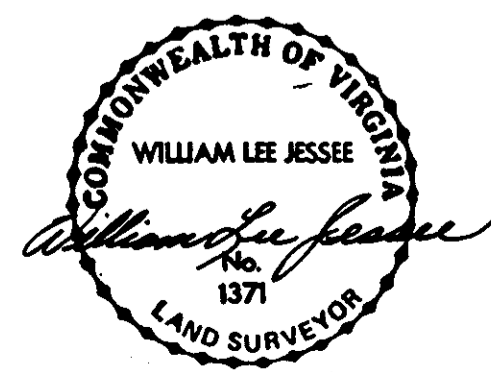


CURVE TABLE						
NO.	CH. BEARING	CHORD	DELTA	RADIUS	LENGTH	TAN
C01	S21°22'45"W	323.78'	28°23'45"	660.04'	327.12'	166.99'
C02	S68°48'48"W	59.96'	08°40'34"	396.35'	60.02'	30.07'
C03	S60°39'48"W	46.61'	08°04'22"	331.05'	46.64'	23.36'
C04	S74°20'12"E	32.78'	81°55'38"	25.00'	35.75'	21.70'
C05	S60°50'35"E	262.37'	54°56'24"	284.39'	272.70'	147.86'
C06	S76°59'37"E	164.88'	22°38'22"	420.00'	165.96'	84.07'
C07	S73°45'06"E	236.33'	29°07'23"	470.00'	238.90'	122.09'
C08	S60°50'35"E	216.24'	54°56'24"	234.39'	224.76'	121.86'
C09	S10°09'49"W	34.44'	87°04'25"	25.00'	37.99'	23.75'
C10	S55°09'49"W	48.74'	02°55'35"	954.40'	48.75'	24.38'
C11	S44°46'08"W	296.36'	17°51'49"	954.40'	297.56'	150.00'
C12	S01°39'19"E	32.50'	15°14'07"	122.60'	32.60'	16.39'
C13	S68°56'02"W	48.89'	08°28'06"	331.05'	48.93'	24.51'

NOW OR FORMERLY  
CHRISTOPHER YORK ASSOCIATES, L.P.  
PARCEL 'C'

I WILLIAM LEE JESSEE, A DULY REGISTERED SURVEYOR DO HEREBY CERTIFY THAT THIS DRAWING IS ACCURATE (WITHIN NORMAL TOLERANCES) AND COMPLIES WITH SECTION 55-79.58(a) OF THE CONDOMINIUM ACT AND THAT THE UNITS SHOWN HEREON ARE SUBSTANTIALLY COMPLETED IN ACCORDANCE HEREWITH.

*William Lee Jesse*, DATE 11-13-89



Filed in the Clerk's Office, Circuit Court, York Co., Va. the 20th day of November, 1989

Teste:  
Nancy B. Kane, Clerk  
*Carol Drosselmaier*

9.282. M.