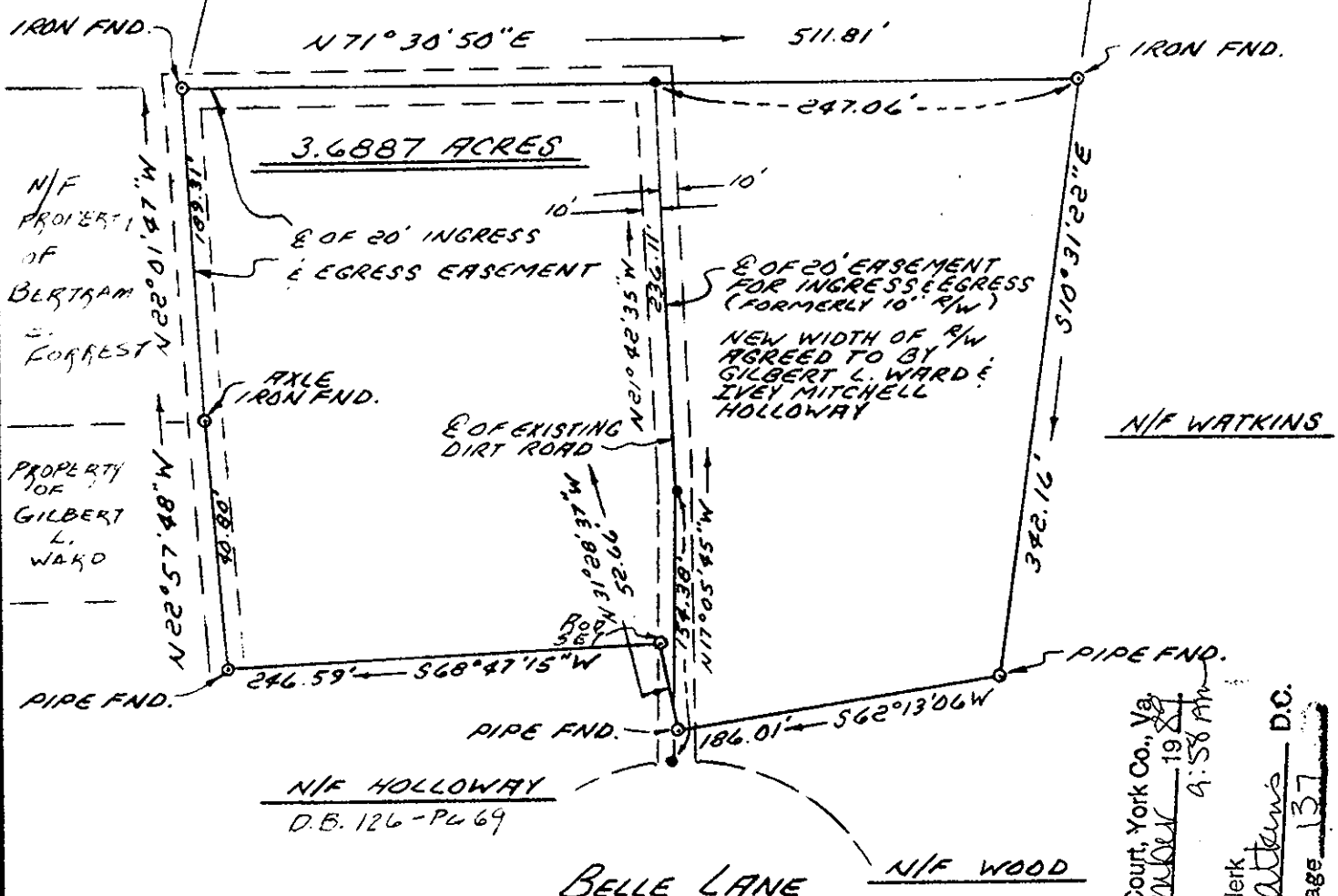


REFERENCES

- D.B. 181 PG. 416 D.B. 126 PG. 69 D.B. 222 PG. 182
- D.B. 194 PG. 79 D.B. 53 PG. 119 D.B. 23 PG. 631
- D.B. 93 PG. 283 D.B. 101 PG. 42 D.B. 27 PG. 496
- D.B. 58 PG. 135 D.B. 33 PG. 405 P.B. 1 PG. 108
- D.B. 59 PG. 589 D.B. 35 PG. 176 D.B. 194 PG. 81
- D.B. 211 PG. 220 D.B. 115 PG. 253 D.B. 104 PG. 134
- D.B. 294 PG. 870 D.B. 281 PG. 106 D.B. 60A PG. 323
- P.B. 1 PG. 38 D.B. 409 PG. 740 D.B. 416 PG. 680
- D.B. 164 PG. 453 D.B. 463 PG. 781 D.B. 345 PG. 218

N/F FORREST
 PLAT REFERENCE
 D.B. 391 - Pg 237



N/F HOLLOWAY
 D.B. 126 - Pg 69

BELLE LANE

N/F WOOD

NOTE: THIS PROPERTY SURVEY WAS
 MADE WITH ON THE FIELD ASSISTANCE
 OF THE FOLLOWING ADJOINING OWNERS:

OWNER: BERTRAM E. FORREST *Bertram E. Forrest*
 IVEY MITCHELL HOLLOWAY *Ivey Mitchell Holloway*
 GILBERT L. WARD *Gilbert L. Ward*
 JOHN S. FORREST *John Samuel Forrest*

Filed in the Clerk's Office, Circuit Court, York Co., Va.
 the 20th day of November 1988
 Test: *Nancy B. Kane* 4:58 PM
Nancy B. Kane, Clerk
Barbara W. Watters
 D.C.
 Plat Book No. 11 Page 137



Andrew Becouvarakis
 ANDREW BECOUVARAKIS C.L.S.

PLAT OF THE PROPERTY OF
GILBERT L. & BARBARA WARD
 PARCEL OF LAND
 CONTAINING 3.6887 ACRES
 LOCATED OFF OF BELLE LANE
 CITY OF POQUOSON, VIRGINIA

BECOUVARAKIS AND ASSOC.
 CIVIL ENGINEERING AND LAND SURVEYORS
 HAMPTON, VIRGINIA

Scale: 1" = 100'
 Date: SEPT. 29, 1989

F.B. 333 Pg. 6-7
 F.B. 266 Pg. 40-41