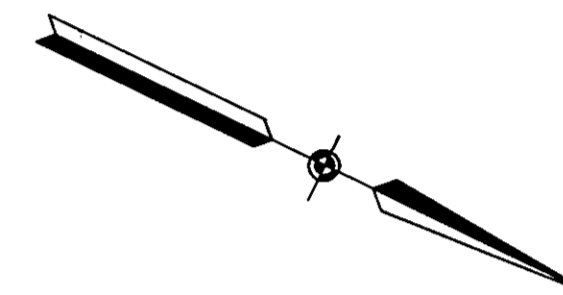


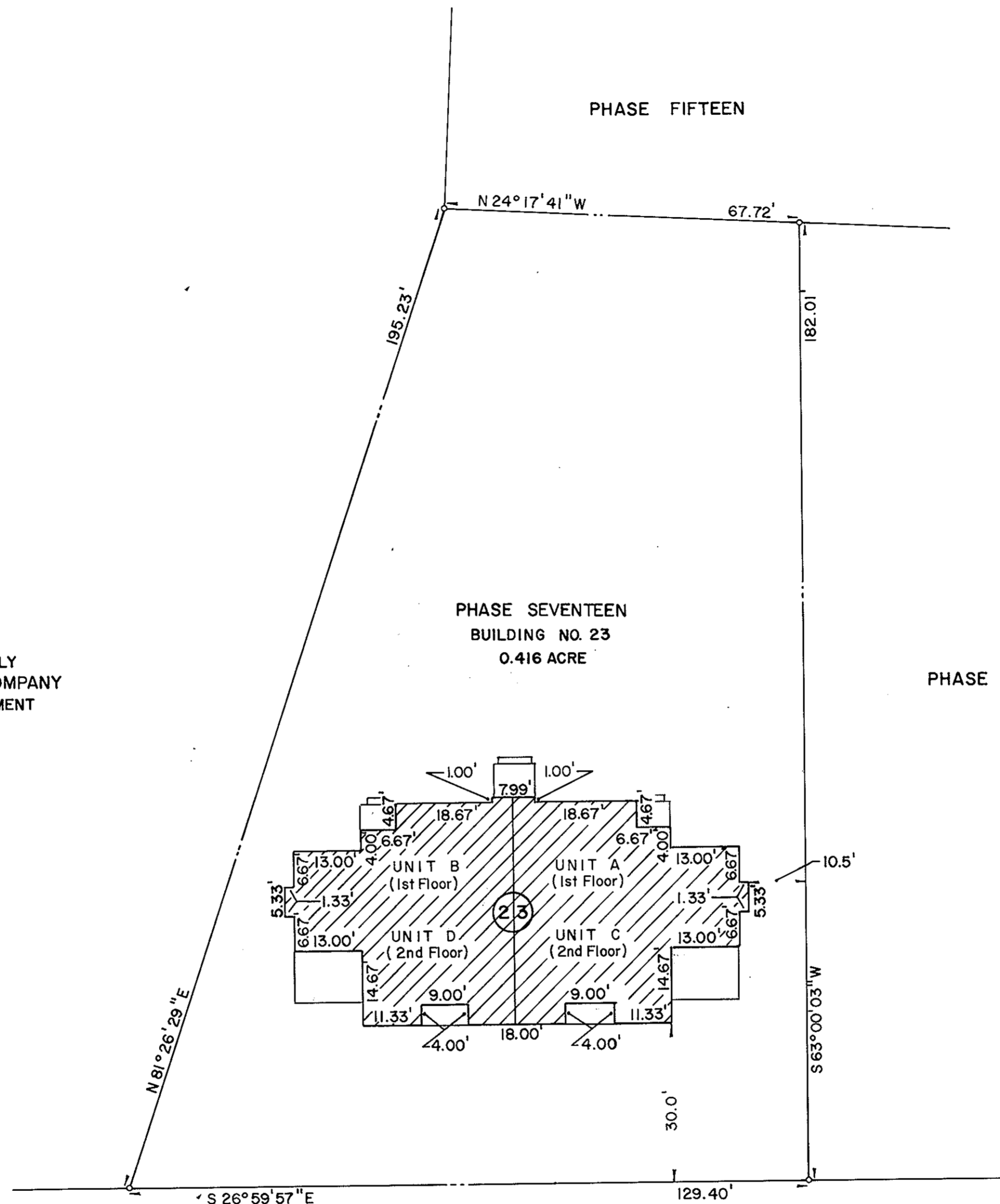
SHEET 2 OF 2
BURNT BRIDGE RUN CONDOMINIUMS
 PHASE SEVENTEEN
 GRAFTON DISTRICT COUNTY OF YORK, VIRGINIA
 SCALE: 1" = 20' DECEMBER 1, 1989



THE SIRINE GROUP, LTD.
 SURVEYORS • ENGINEERS • PLANNERS
 P.O. BOX 450, ROUTE 17
 WHITE MARSH, VIRGINIA
 23183


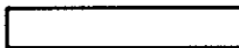
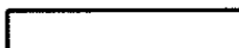
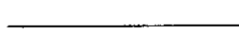


NOW OR FORMERLY
 BURNT BRIDGE RUN COMPANY
 FUTURE DEVELOPMENT



NOW OR FORMERLY
 SEVENTEEN EIGHTY-ONE, INC.

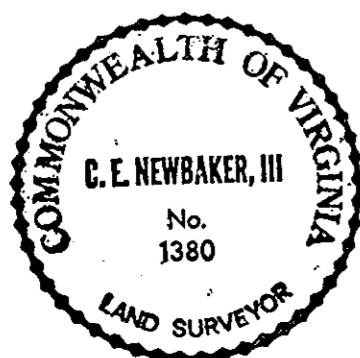
LEGEND

-  FEE TITLE AREA
-  COMMON ELEMENTS
-  LIMITED COMMON ELEMENTS
-  LIMIT OF AREA OR ELEMENTS

Plan Book No. 11 Page 144

- NOTES:
1. ALL BUILDING DIMENSIONS SHOWN HEREON ARE EXTERIOR DIMENSIONS AND ARE IN FEET.
 2. THE DESIGNATION OF FEE TITLE AREA IS SUPERSEDED BY THE DECLARATION AND IS NOT INTENDED TO IMPLY THAT EXTERIOR WALLS, BEARING WALLS AND OTHER COMMON ELEMENTS ARE FEE TITLE AREA.
 3. I CERTIFY THAT THIS PLAT COMPLIES WITH THE PROVISIONS OF SUBSECTION (a) OF 55-79.58 OF THE CONDOMINIUM ACT AND THAT ALL UNITS DEPICTED HEREON HAVE BEEN SUBSTANTIALLY COMPLETED.

SIGNED: 
 C. E. NEWBAKER III



Filed in the Clerk's Office, Circuit Court, York County, Virginia
 this 12th day of Dec. 1989
 Yes...
