

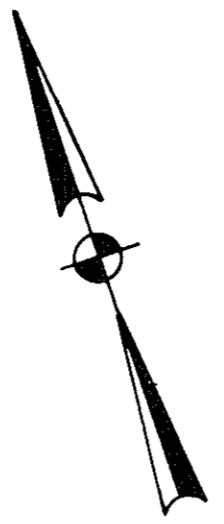
THIS PLAT IS AN EXHIBIT TO THE DECLARATION OF YORKSHIRE DOWNS CONDOMINIUM, DATED MARCH 1, 1988 AND RECORDED IN PLAT BOOK 11, PAGE 160.

YORKSHIRE DOWNS
CONDOMINIUM
 PHASE X
 LOCATED IN
 YORK COUNTY, VIRGINIA

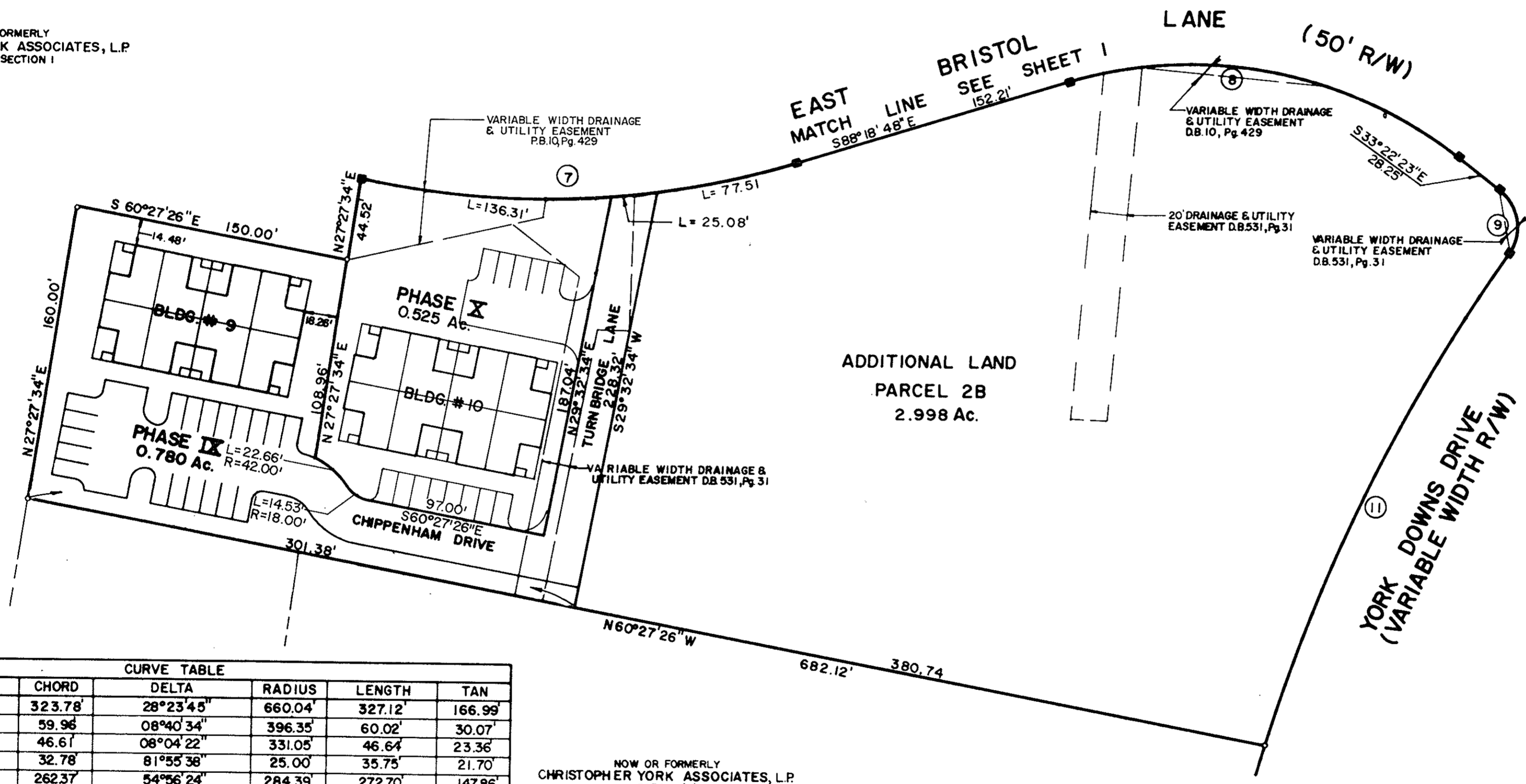


Talbot & Associates, Ltd.
 Architects, Engineers, Planners, Surveyors, Landscape Architects
 100 Landmark Square, Virginia Beach, Va. 23452
 739 Thimble Shoals Blvd., Suite 1006, Newport News, Va. 23606

SCALE: 1" = 50' SHEET 2 OF 3 JANUARY 16, 1990



NOW OR FORMERLY
 CHRISTOPHER YORK ASSOCIATES, L.P.
 PHASE I, SECTION I

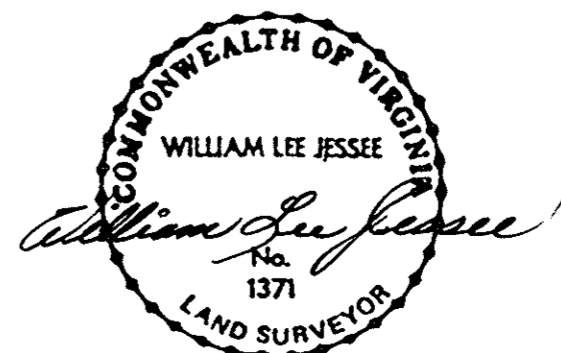


CURVE TABLE						
NO.	CH. BEARING	CHORD	DELTA	RADIUS	LENGTH	TAN
C01	S21°22'45"W	323.78'	28°23'45"	660.04'	327.12'	166.99'
C02	S68°49'48"W	59.96'	08°40'34"	396.35'	60.02'	30.07'
C03	S60°39'48"W	46.61'	08°04'22"	331.05'	46.64'	23.36'
C04	S74°20'12"E	32.78'	81°55'38"	25.00'	35.75'	21.70'
C05	S60°50'35"E	262.37'	54°56'24"	284.39'	272.70'	147.86'
C06	S76°59'37"E	164.88'	22°38'22"	420.00'	165.96'	84.07'
C07	S73°45'06"E	236.33'	29°07'23"	470.00'	238.90'	122.09'
C08	S60°50'35"E	216.24'	54°56'24"	234.39'	224.76'	121.86'
C09	S10°09'49"W	34.44'	87°04'25"	25.00'	37.99'	23.75'
C10	S55°09'49"W	48.74'	02°55'35"	954.40'	48.75'	24.38'
C11	S44°46'08"W	296.36'	17°51'49"	954.40'	297.56'	150.00'
C12	S01°39'19"E	32.50'	15°14'07"	122.60'	32.60'	16.39'
C13	S68°56'02"W	48.89'	08°28'06"	331.05'	48.93'	24.51'

NOW OR FORMERLY
 CHRISTOPHER YORK ASSOCIATES, L.P.
 PARCEL 'C'

I WILLIAM LEE JESSEE, A DULY REGISTERED SURVEYOR DO HEREBY CERTIFY THAT THIS DRAWING IS ACCURATE (WITHIN NORMAL TOLERANCES) AND COMPLIES WITH SECTION 55-79.58(a) OF THE CONDOMINIUM ACT AND THAT THE UNITS SHOWN HEREON ARE SUBSTANTIALLY COMPLETED IN ACCORDANCE HEREWITH.

William Lee Jessee, DATE 2-13-90



Plat Book No. 11 Page 160
 1445 ...
Robert E. ...