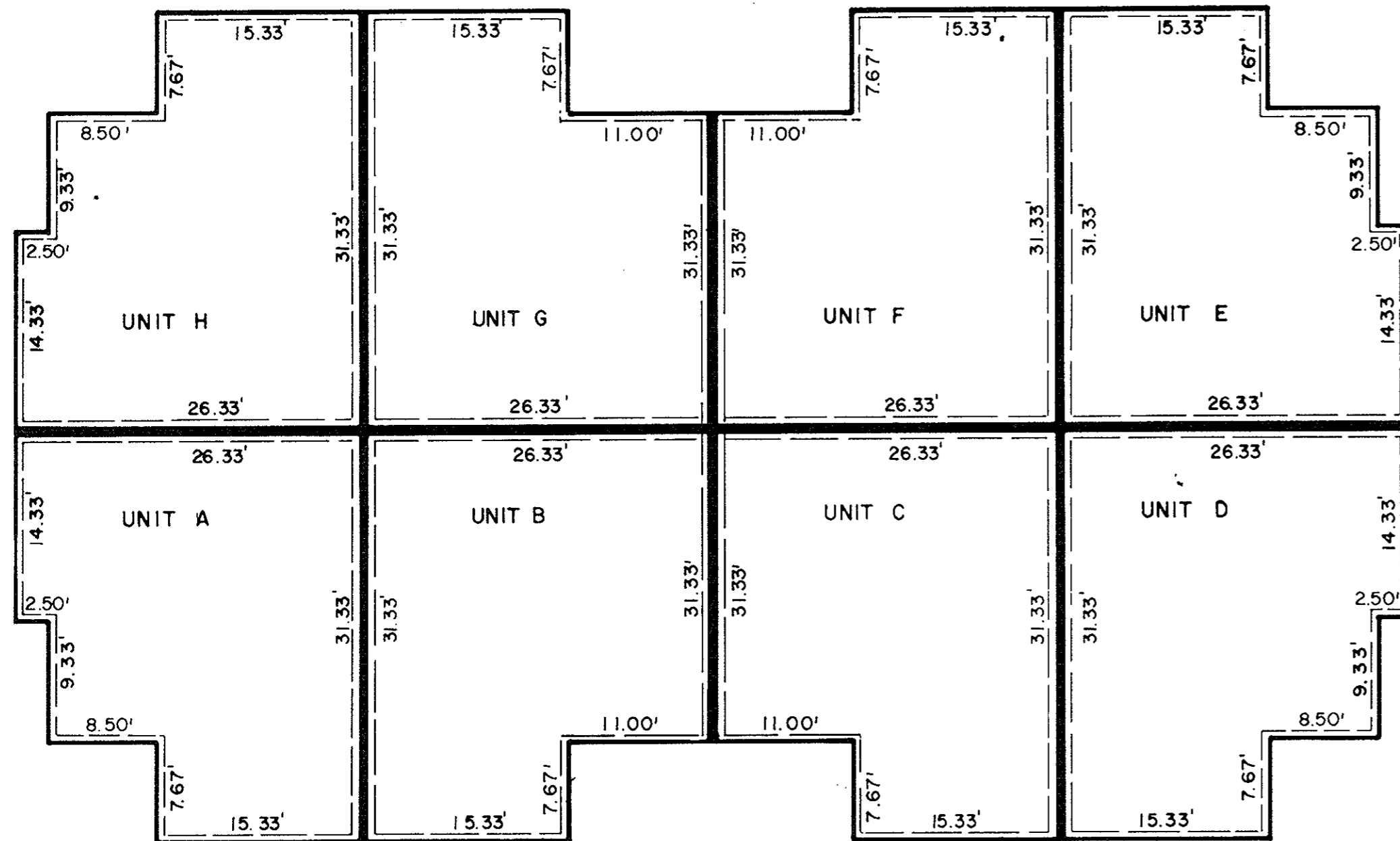


YORKSHIRE DOWNS
 CONDOMINIUM
 UNIT DIMENSION PLAN
 PHASE X



SCALE: AS SHOWN

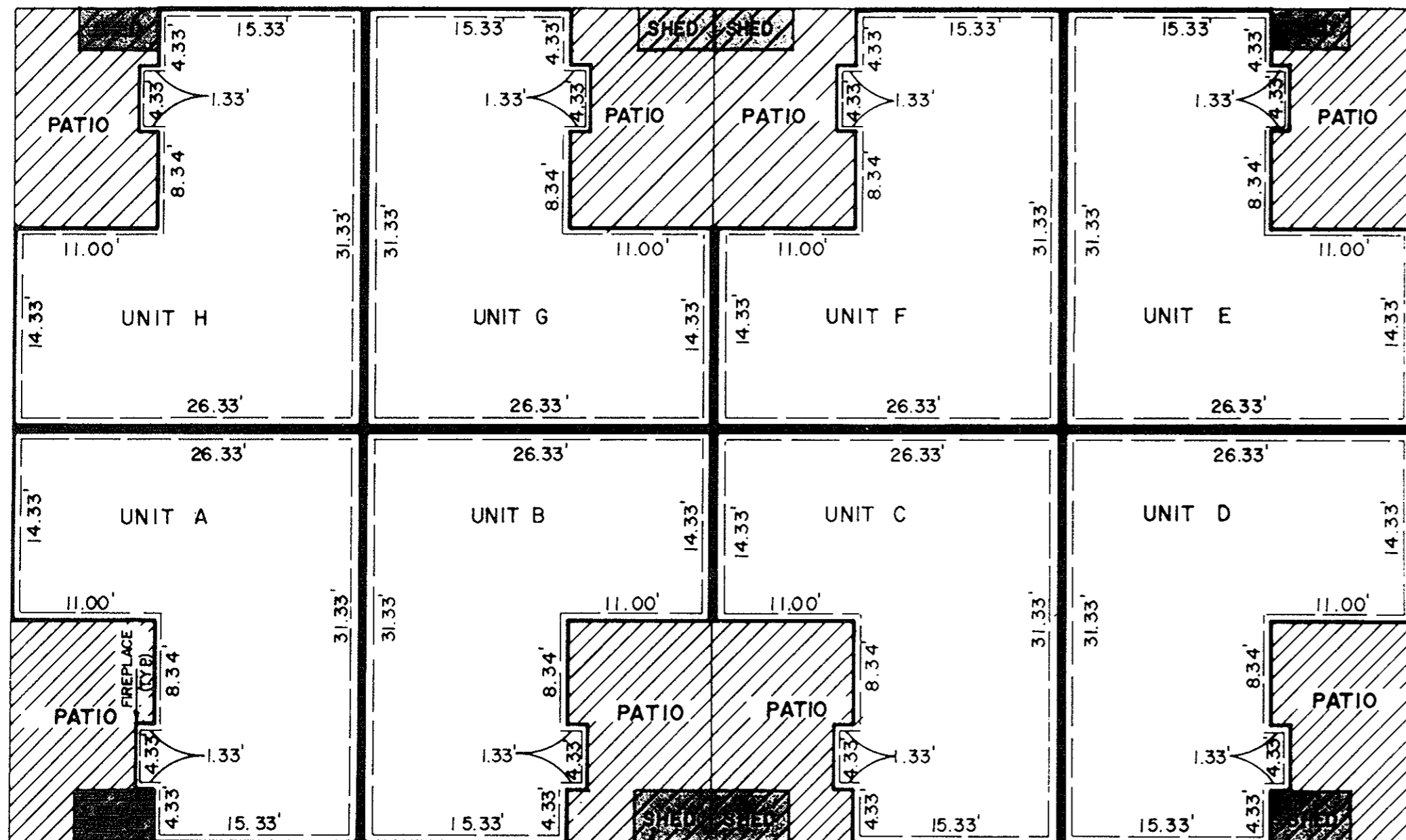
SHEET 3 OF 3



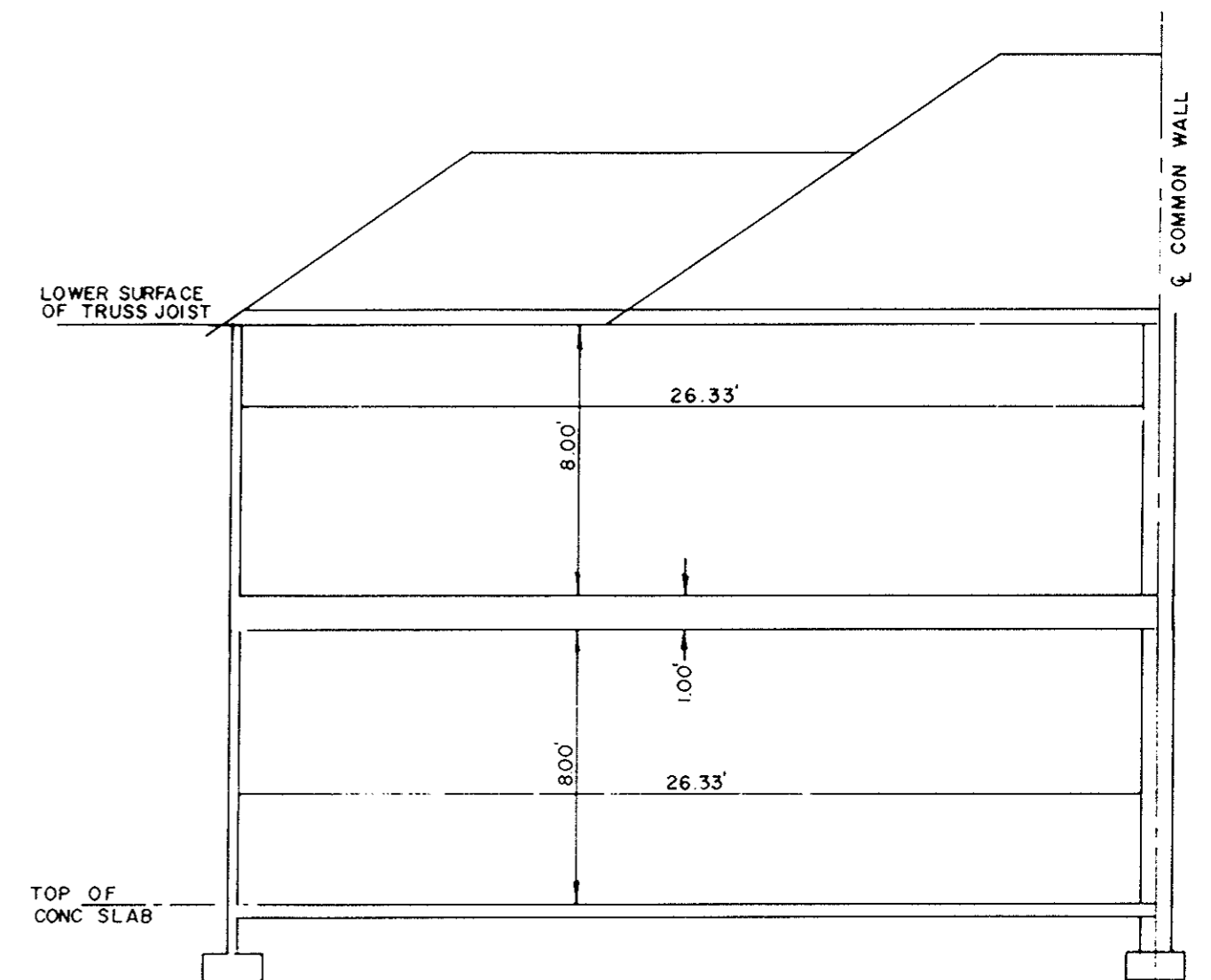
SECOND FLOOR PLAN
 1" = 10'

LIMITED COMMON ELEMENT

NOTE:
 SECTIONAL VIEWS OF UNITS AND ALL UNIT DIMENSIONS WERE OBTAINED FROM THE ARCHITECTURAL PLANS OF RICHARD LEE GRIMSTEAD, A REGISTERED ARCHITECT WITH THE COMMONWEALTH OF VIRGINIA.



FIRST FLOOR PLAN
 1" = 10'



TYPICAL SECTION
 SCALE: 1" = 5'

I, G. WALLACE McCULLOCH, A DULY REGISTERED ENGINEER, DO HEREBY CERTIFY THAT THIS DRAWING IS ACCURATE (WITHIN NORMAL TOLERANCES) AND COMPLIES WITH SECTION 55-79.58(b) OF THE CONDOMINIUM ACT AND THAT THE UNITS SHOWN HEREON ARE SUBSTANTIALLY COMPLETED IN ACCORDANCE HERewith.

G. Wallace McCulloch, DATE 2-13-90

Flat Book No. 11

PROJECT NO: 872217
 FILE NO: 872217

1440 February 1990
 Kim D. King, Watkins