

THIS PLAT IS AN EXHIBIT TO THE DECLARATION OF YORKSHIRE DOWNS CONDOMINIUM, DATED MARCH 1, 1990 AND RECORDED IN DEED BOOK 11, PAGE 162

YORKSHIRE DOWNS CONDOMINIUM PHASE XI LOCATED IN YORK COUNTY, VIRGINIA



SCALE: 1" = 50' FEBRUARY 8, 1990 SHEET 1 OF 3

NOW OR FORMERLY CHRISTOPHER YORK ASSOCIATES, L.P. PHASE 2, SECTION 1

TOTAL ACREAGE = 9.960

200' VEPCO EASEMENT DB 74 PG 293

PROPOSED VARIABLE WIDTH DRAINAGE & UTILITY EASEMENT

VICINITY MAP SCALE: 1" = 2000'

THE PLATTING OF THE LAND HEREON SHOWN IS WITH THE FREE CONSENT AND IN ACCORDANCE WITH THE DESIRE OF THE UNDERSIGNED OWNER. LANDS END ASSOCIATES, A VIRGINIA LIMITED PARTNERSHIP BY P.H.P. ENTERPRISES INC., A VIRGINIA CORPORATION GENERAL PARTNER

BY: PHP ENTERPRISES INC., GENERAL PARTNER

STATE OF VIRGINIA CITY OF... A NOTARY PUBLIC IN AND FOR THE CITY AND STATE AFORESAID DO HEREBY CERTIFY THAT THE ABOVE NAMED PERSON WHOSE NAME IS SIGNED TO THE FOREGOING WRITING HAS ACKNOWLEDGED THE SAME BEFORE ME IN MY CITY AND STATE AFORESAID.

GIVEN UNDER MY HAND THIS 13th DAY OF February 1990.

NOTARY PUBLIC

MY COMMISSION EXPIRES: 5-24-92

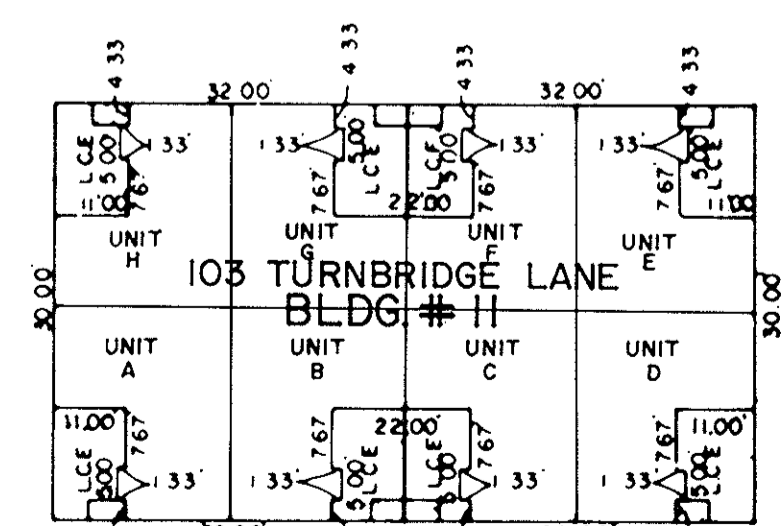
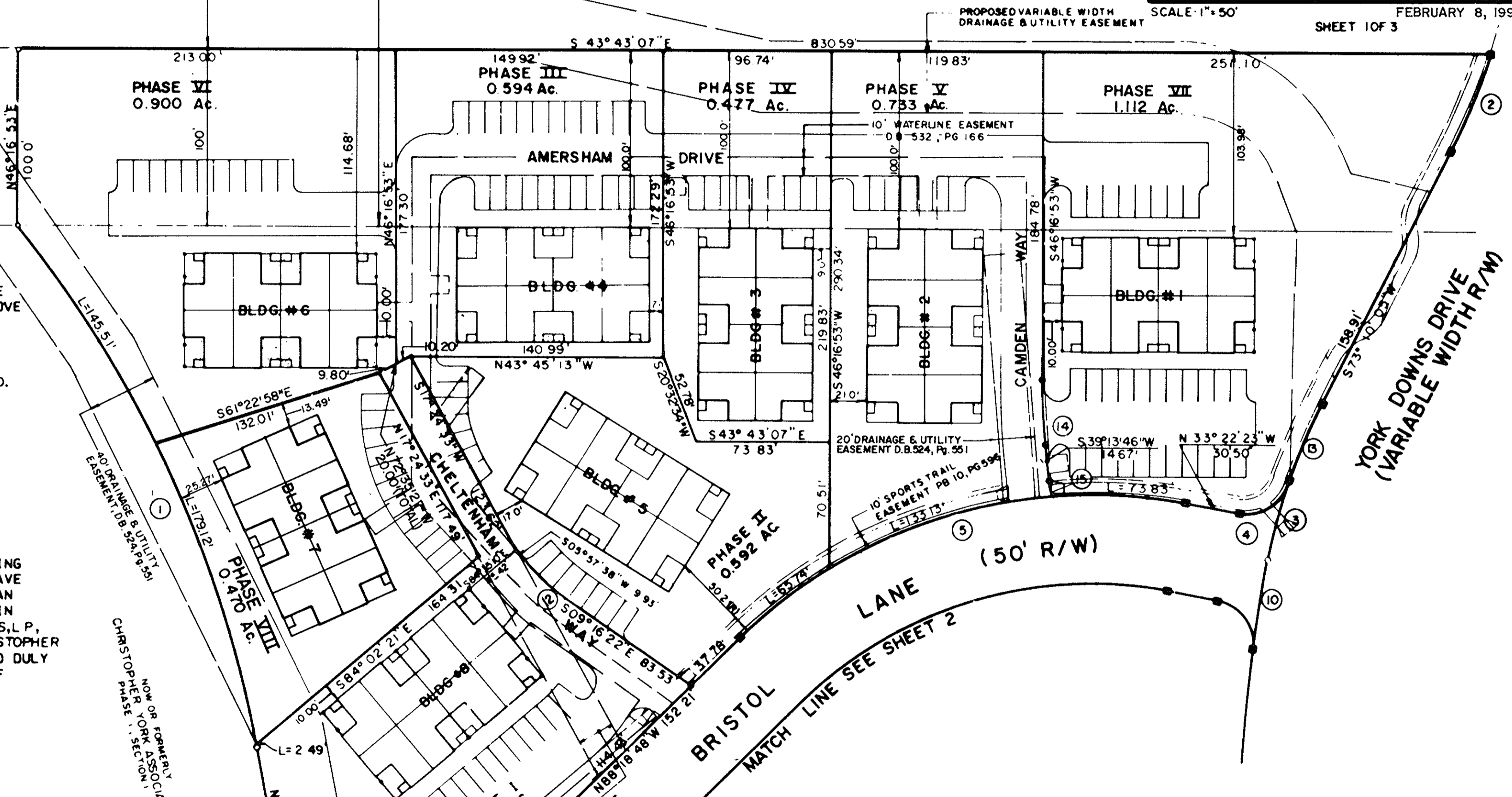
TO THE BEST OF MY KNOWLEDGE AND BELIEF, ALL THE REQUIREMENTS AS SET FORTH IN THE ORDINANCE FOR APPROVING PLATS OF SUBDIVISION IN THE COUNTY OF YORK, VIRGINIA HAVE BEEN COMPLETED WITH, INCLUDING A CLOSURE OF NOT LESS THAN 1 1/10,000'. THIS IS TO CERTIFY THAT THE LAND EMBRACED IN THIS SUBDIVISION IS IN THE NAME OF LANDS END ASSOCIATES, L.P., A VIRGINIA LIMITED PARTNER AND WAS ACQUIRED FROM CHRISTOPHER YORK ASSOCIATES, L.P. BY DEED DATED DEC 9, 1987 AND DULY RECORDED IN THE CLERK'S OFFICE OF THE CIRCUIT COURT OF THE COUNTY OF YORK, VIRGINIA, IN DEED BOOK 506 PAGE 301

WILLIAM LEE JESSEE LAND SURVEYOR, NO. 1371



I, WILLIAM LEE JESSEE, A DULY REGISTERED SURVEYOR DO HEREBY CERTIFY THAT THIS DRAWING IS ACCURATE (WITHIN NORMAL TOLERANCES) AND COMPLIES WITH SECTION 55-79.38(a) OF THE CONDOMINIUM ACT AND THAT THE UNITS SHOWN HEREON ARE SUBSTANTIALLY COMPLETED IN ACCORDANCE HEREWITH.

DATE 2-13-90



ALL UNITS DEPICTED HEREON ARE SAME UNIT TYPE AS SHOWN ON UNIT DIMENSION PLAN

LCE LIMITED COMMON ELEMENT

THE PROPERTY, AS DEPICTED ON THIS PLAT DOES NOT VIOLATE THE PROVISIONS OF THE YORK COUNTY SUBDIVISION ORDINANCE.

SIGNED: DIRECTOR OF PLANNING & COMM. DEV.

DATE: FEBRUARY 14, 1990

Handwritten signatures and notes at the bottom right of the page.