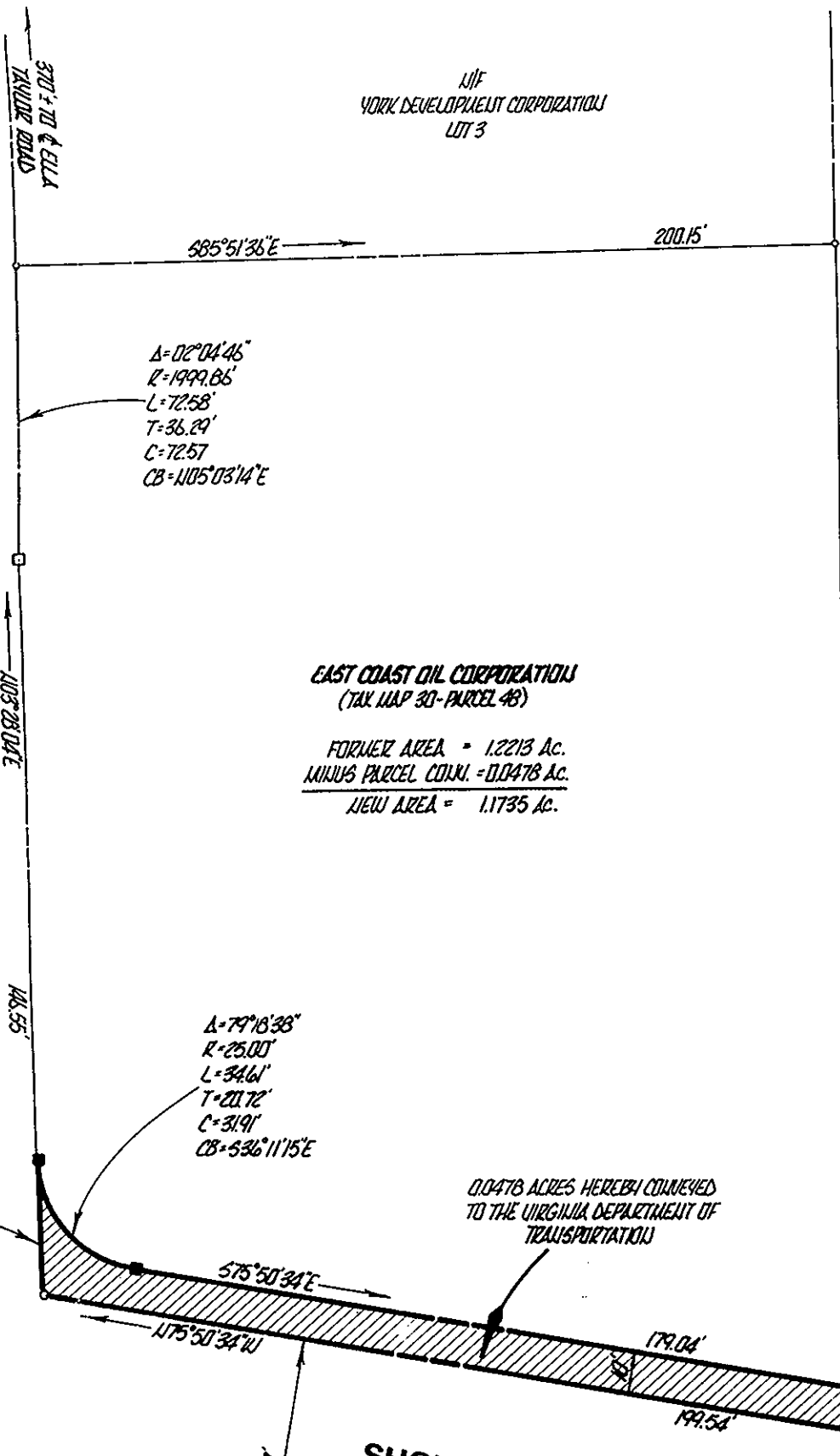
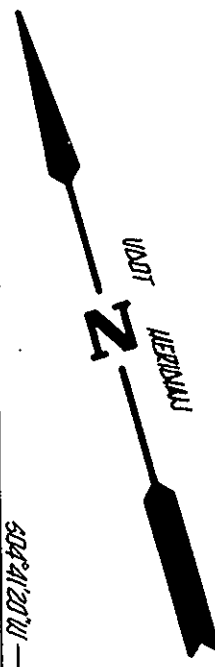


YIF
YORK DEVELOPMENT CORPORATION
LOT 3



$A = 02^{\circ}04'46''$
 $R = 1999.86'$
 $L = 72.58'$
 $T = 36.29'$
 $C = 72.57'$
 $CB = 1105^{\circ}03'14''E$

EAST COAST OIL CORPORATION
(TAX MAP 30 - PARCEL 48)

FORMER AREA = 1.2213 Ac.
MINUS PARCEL CONT. = 0.0478 Ac.

NEW AREA = 1.1735 Ac.

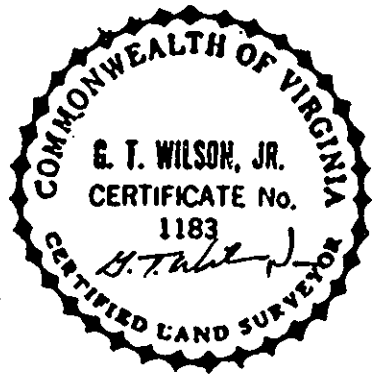
$A = 79^{\circ}16'38''$
 $R = 25.00'$
 $L = 34.61'$
 $T = 21.72'$
 $C = 31.91'$
 $CB = 536^{\circ}11'15''E$

0.0478 ACRES HEREBY CONVEYED
TO THE VIRGINIA DEPARTMENT OF
TRANSPORTATION

SHOWALTER DRIVE
ROUTE 614
(OLD ROUTE 679)

Filed in the Clerk's Office, Circuit Court, York Co., Va.
the 19th day of March 1990
3:12 P.M.

APPROVED BY:
J. Mail Carter Agent of York County
Nancy B. Kane, Clerk
Plat Book No. 11 Page 182



AES, a professional corporation engineers, surveyors, planners Williamsburg, Virginia

**PLAT OF RIGHT-OF-WAY DEDICATION
BY EAST COAST OIL CORPORATION
TO THE VIRGINIA DEPARTMENT OF TRANSPORTATION**