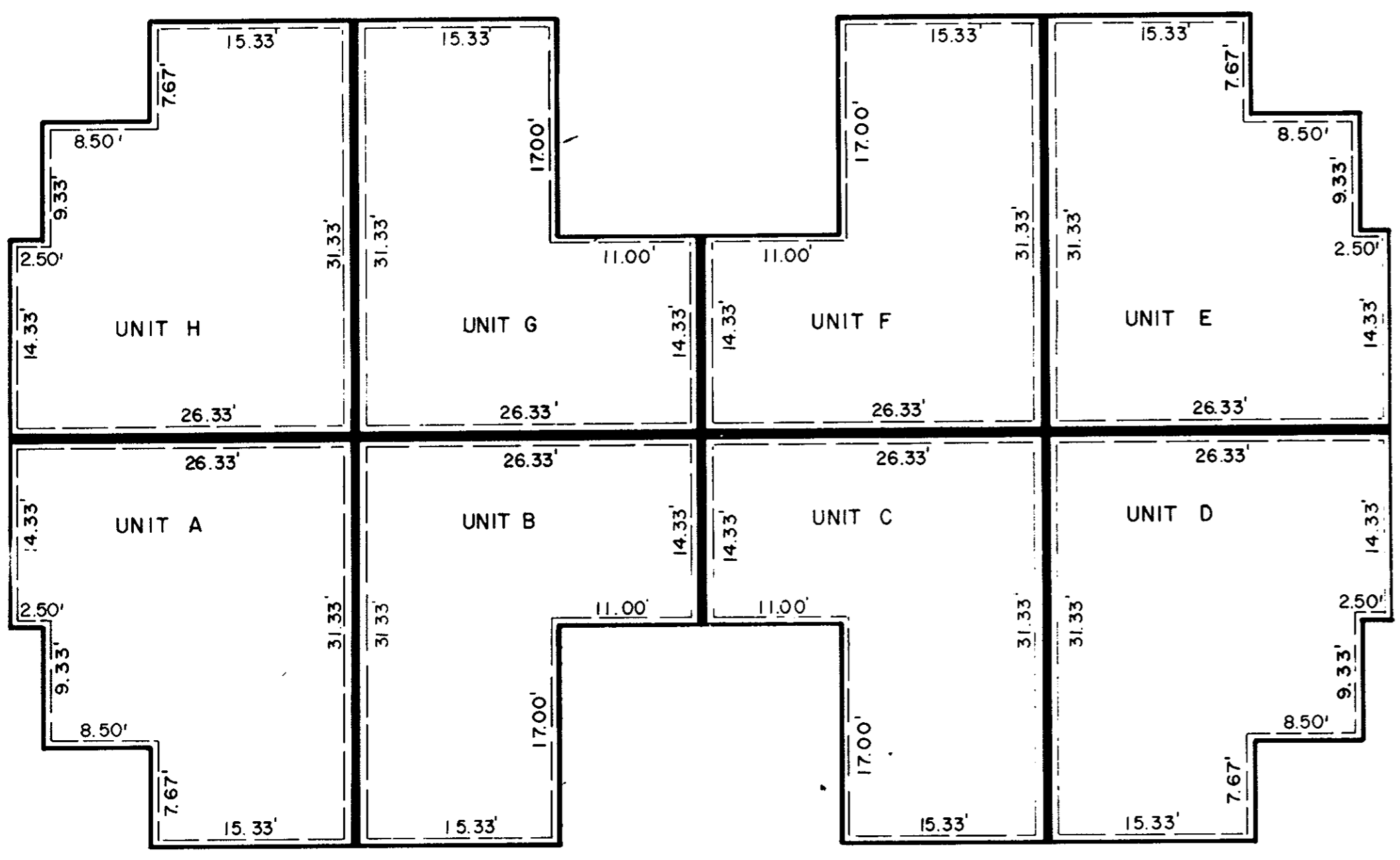


YORKSHIRE DOWNS  
CONDOMINIUM  
UNIT DIMENSION PLAN  
PHASE XIII

**Talbot & Associates, Ltd.**  
Architects, Engineers, Planners, Surveyors, Landscape Architects  
100 Landmark Square, Virginia Beach, Va. 23452  
739 Thimble Shoals Blvd., Suite 1006, Newport News, Va. 23606

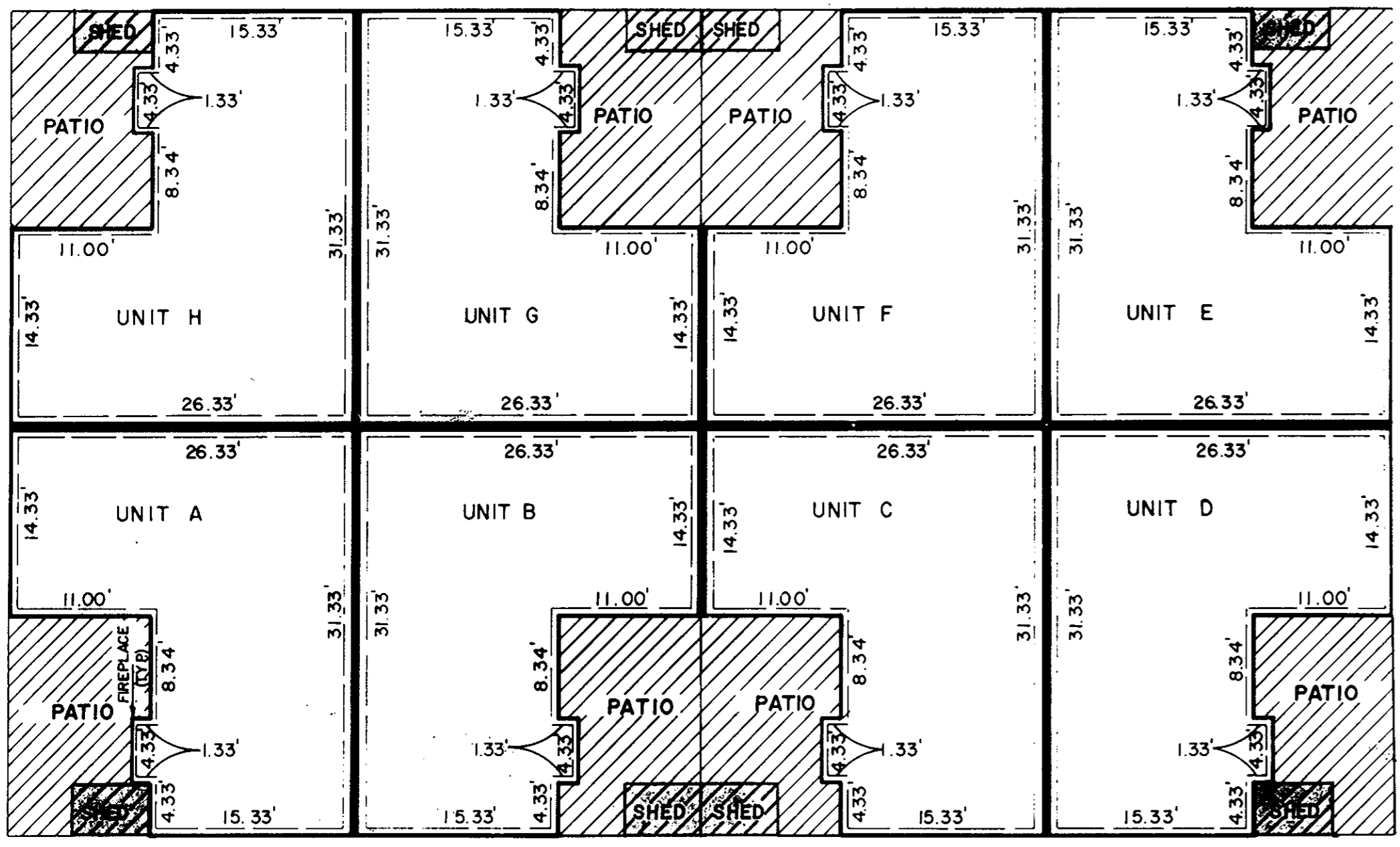
SCALE: AS SHOWN DATE: APRIL 5, 1990  
SHEET 3 OF 3



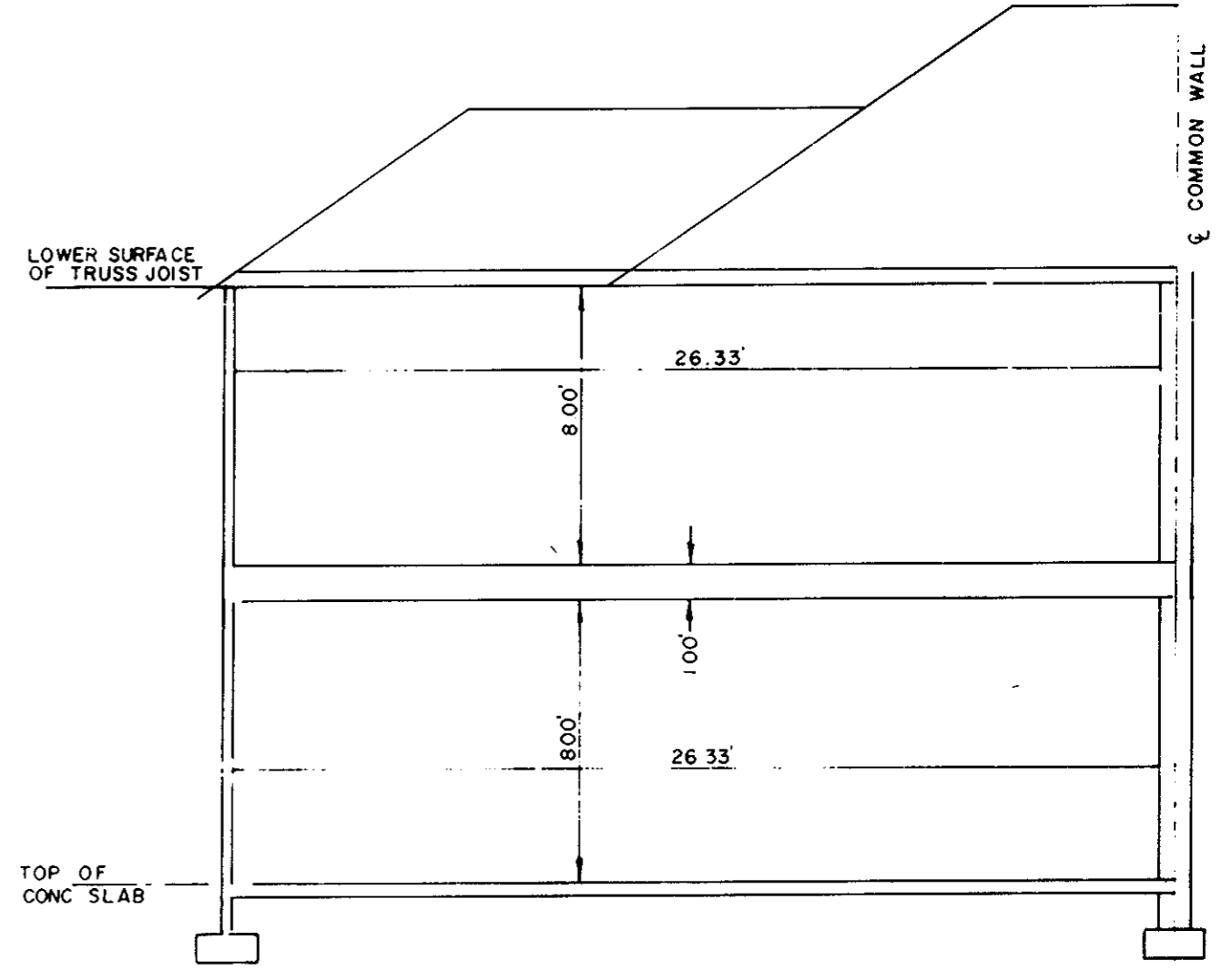
SECOND FLOOR PLAN  
1" = 10'

LIMITED COMMON ELEMENT

NOTE:  
SECTIONAL VIEWS OF UNITS AND ALL UNIT DIMENSIONS WERE OBTAINED FROM THE ARCHITECTURAL PLANS OF RICHARD LEE GRIMSTEAD, A REGISTERED ARCHITECT WITH THE COMMONWEALTH OF VIRGINIA.



FIRST FLOOR PLAN  
1" = 10'



TYPICAL SECTION  
SCALE: 1" = 5'

Plan Book No. 11 Page 201



I, G. WALLACE McCULLOCH, A DULY REGISTERED ENGINEER, DO HEREBY CERTIFY THAT THIS DRAWING IS ACCURATE (WITHIN NORMAL TOLERANCES) AND COMPLIES WITH SECTION 55-79.58(b) OF THE CONDOMINIUM ACT AND THAT THE UNITS SHOWN HEREON ARE SUBSTANTIALLY COMPLETED IN ACCORDANCE HEREWITH.

*G. Wallace McCulloch*, DATE 4/16/90

Filed in the Clerk's Office, Circuit Court, York Co., Va. the 30th day of April 1990

Teste: *Nancy B. Kane* D.C.

NANCY B. KANE, CLERK

PROJECT NO: 872217  
FILE NO: 872217