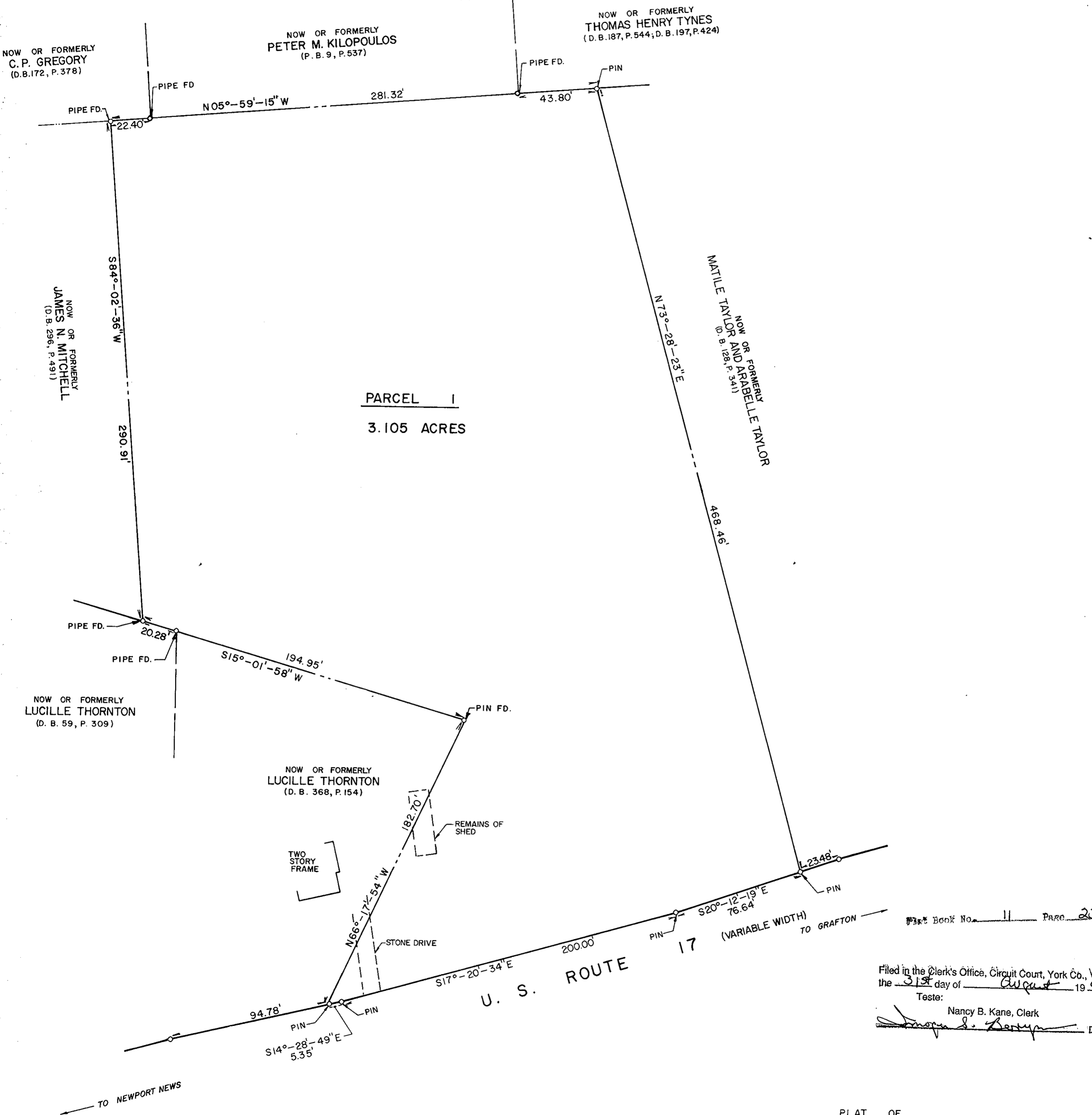


I HEREBY CERTIFY THAT THIS SURVEY, TO THE BEST OF MY KNOWLEDGE AND BELIEF, IS CORRECT AND COMPLIES WITH THE MINIMUM PROCEDURES AND STANDARDS ESTABLISHED BY THE VIRGINIA BOARD OF ARCHITECTS, PROFESSIONAL ENGINEERS, LAND SURVEYORS AND CERTIFIED LANDSCAPE ARCHITECTS.

SIGNED: *C. E. Newbaker III*
C. E. NEWBAKER III



Filed in the Clerk's Office, Circuit Court, York Co., Va.
the 31st day of August 1990
Teste:
Nancy B. Kane, Clerk
Thomas S. Berry D.C.

PLAT OF
PARCEL I
PROPERTY PLAT, FRANK TAYLOR ESTATE
FOR (D. B. 128, P. 341)
MALCOLM S. Van de WATER
GRAFTON DISTRICT COUNTY OF YORK, VIRGINIA
Scale: 1" = 40' December 2, 1985

THE SIRINE GROUP, LTD.
SURVEYORS - ENGINEERS - PLANNERS
P.O. BOX 450
WHITE MARSH, VIRGINIA 23183

