

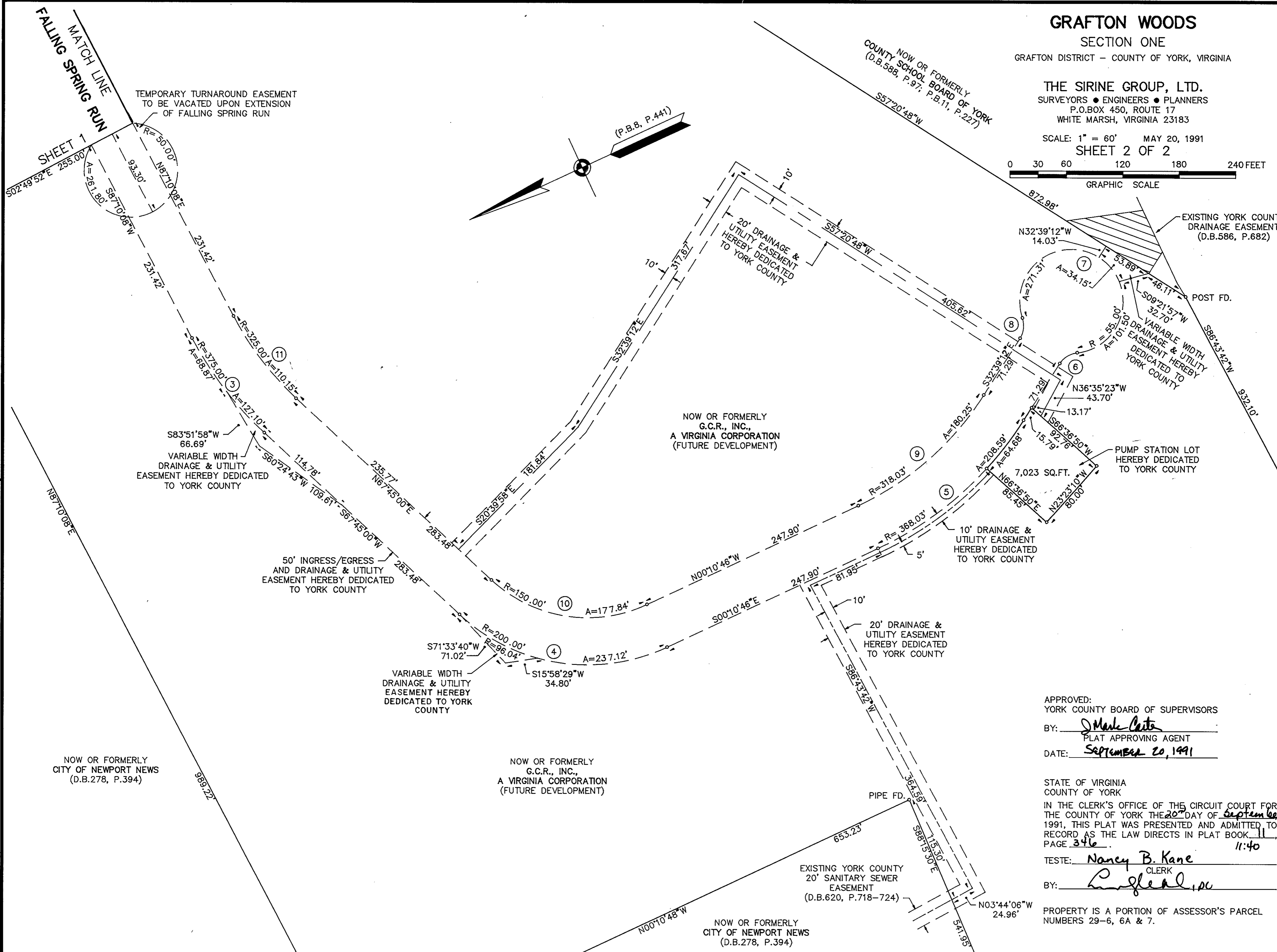
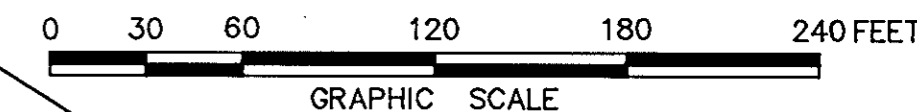
GRAFTON WOODS

SECTION ONE
GRAFTON DISTRICT - COUNTY OF YORK, VIRGINIA

THE SIRINE GROUP, LTD.

SURVEYORS • ENGINEERS • PLANNERS
P.O. BOX 450, ROUTE 17
WHITE MARSH, VIRGINIA 23183

SCALE: 1" = 60' MAY 20, 1991
SHEET 2 OF 2



APPROVED:
YORK COUNTY BOARD OF SUPERVISORS
BY: J. Mark Cate
PLAT APPROVING AGENT
DATE: September 20, 1991

STATE OF VIRGINIA
COUNTY OF YORK
IN THE CLERK'S OFFICE OF THE CIRCUIT COURT FOR
THE COUNTY OF YORK THE 20 DAY OF September
1991, THIS PLAT WAS PRESENTED AND ADMITTED TO
RECORD AS THE LAW DIRECTS IN PLAT BOOK 11,
PAGE 346. 11:40
TESTE: Nancy B. Kane
CLERK
BY: R. L. Head, Jr.
PROPERTY IS A PORTION OF ASSESSOR'S PARCEL
NUMBERS 29-6, 6A & 7.