

Plat Book No. 11 Page 348  
Filed in the Clerk's Office, Circuit Court, York Co., Va.  
the 27th day of September 1991

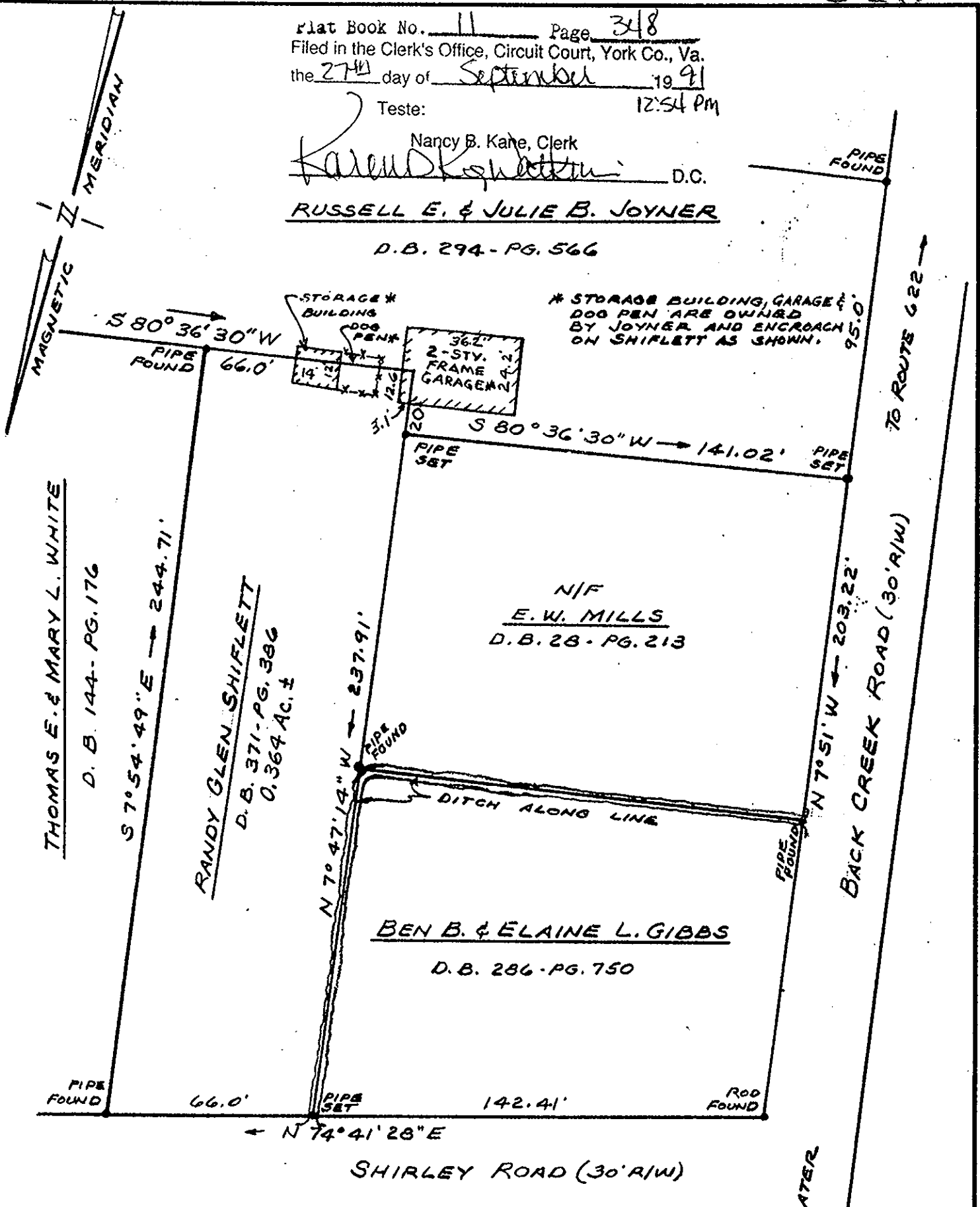
Teste: 12:54 PM

Nancy B. Kane, Clerk

*Karen K. [Signature]* D.C.

RUSSELL E. & JULIE B. JOYNER

D.B. 294 - PG. 566



THOMAS E. & MARY L. WHITE  
D. B. 144 - PG. 176

RANDY GLEN SHIFLETT  
D. B. 371 - PG. 386  
0.364 AC. ±

BEN B. & ELAINE L. GIBBS  
D. B. 286 - PG. 750

N/F  
E. W. MILLS  
D. B. 28 - PG. 213

TAX PARCEL # 68



PLAT  
SHOWING PROPERTY OF  
RANDY GLEN SHIFLETT

BEING PART OF THE E.W. MILLS TRACT  
SHIRLEY ROAD  
GRAFTON DISTRICT, YORK COUNTY, VIRGINIA

SCALE: 1" = 40'      JANUARY 14, 1986

S. J. GLASS & ASSOCIATES  
ENGINEERING SERVICES -- HAMPTON, VIRGINIA

P. F. NO. A - S - 393      FIELD WORK BY: L. B. SJG