

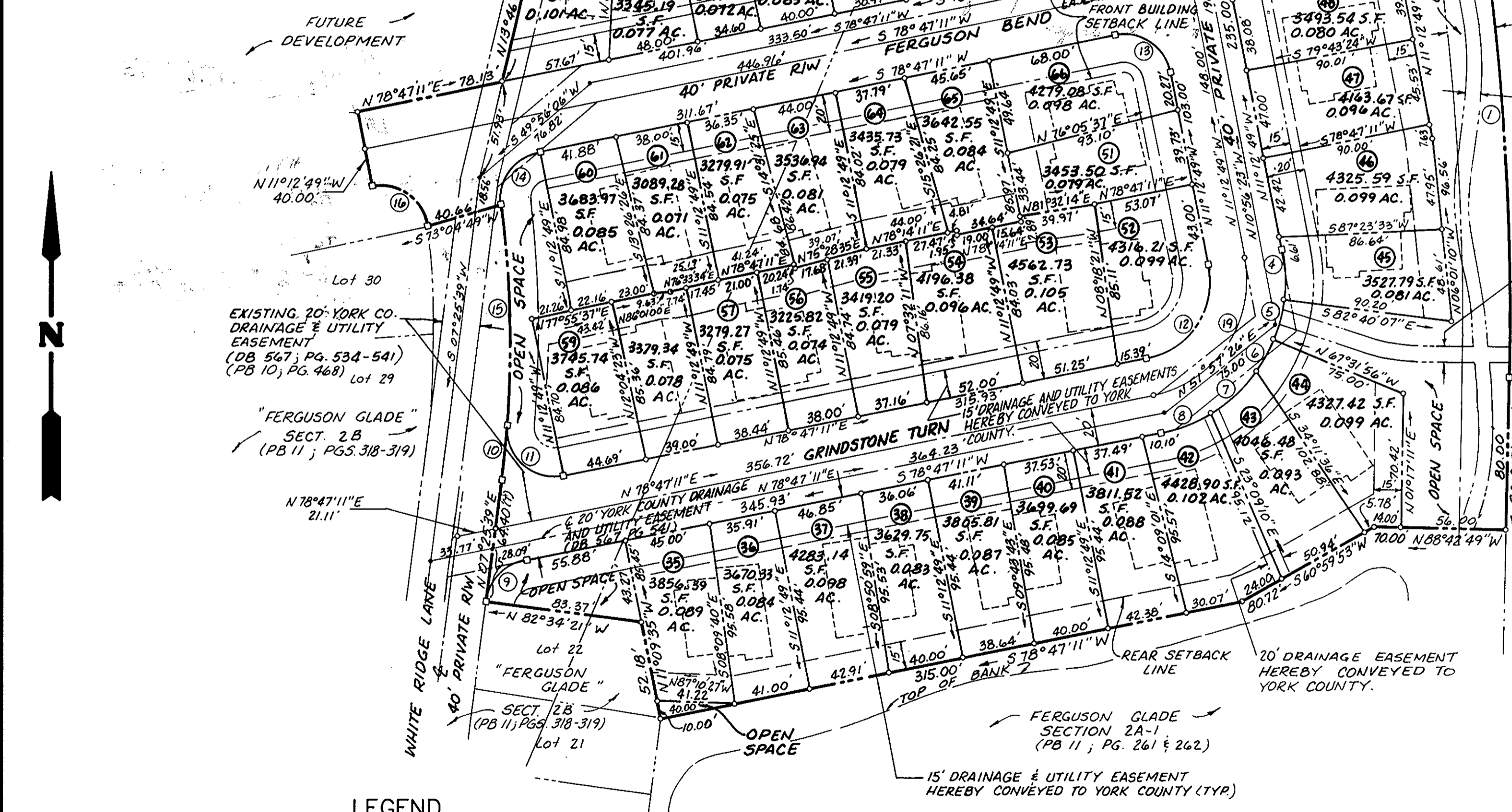
CURVE DATA

NO.	DELTA	RADIUS	ARC	TAN	CHORD	CHD. BRG.
1	12°30'00"	1460.00'	318.52'	159.90'	317.89'	S04°57'49"E
2	90°00'00"	20.00'	31.42'	20.00'	28.28'	N56°12'49"W
3	90°00'00"	25.00'	39.27'	25.00'	35.36'	S33°47'11"W
4	18°32'42"	82.00'	26.54'	13.39'	26.43'	N01°56'28"W
5	15°08'10"	82.00'	21.66'	10.89'	21.60'	S14°53'58"W
6	13°10'49"	82.00'	18.86'	9.47'	18.82'	N29°03'28"E
7	23°08'18"	82.00'	33.12'	16.79'	32.89'	N47°13'02"E
8	20°00'00"	82.00'	28.62'	14.46'	28.48'	N68°47'11"E
9	71°21'32"	24.43'	30.43'	17.54'	28.50'	S43°06'25"W
10	02°50'05"	580.17'	28.70'	14.35'	28.70'	N06°01'33"E
11	105°49'20"	25.00'	46.17'	33.07'	39.89'	S48°18'09"E
12	90°00'00"	42.00'	65.97'	42.00'	59.40'	N33°47'11"E
13	90°00'00"	25.00'	39.27'	25.00'	35.36'	N56°12'49"W
14	85°44'08"	25.00'	37.41'	23.21'	34.02'	S35°55'07"W
15	11°33'28"	580.17'	117.03'	58.71'	116.83'	N01°10'13"W
16	95°00'40"	25.00'	41.46'	27.29'	36.87'	N53°42'29"W
17	90°00'00"	25.00'	39.27'	25.00'	35.36'	N33°47'11"E
18	90°00'00"	20.00'	31.42'	20.00'	28.28'	N33°47'11"E
19	90°00'00"	62.00'	97.39'	62.00'	87.68'	N33°47'11"E

RECORD PLAT  
FOR:  
COVENTRY PLANNED DEVELOPMENT  
FERGUSON GLADE  
SECTION 2C

COUNTY OF YORK, VIRGINIA  
The DeYoung-Johnson Group, Inc.  
P.O. Box 3505  
Williamsburg, Virginia 23187

SCALE: 1"=50'  
MAY 17, 1991  
SHEET 2 OF 2



EXISTING 25' YORK COUNTY DRAINAGE & UTILITY EASEMENT (PB 10; PG. 466-467)

PROPOSED 8' PRIVATE PEDESTRIAN WALKWAY EASEMENT TO BE DEDICATED TO COVENTRY HOMEOWNERS ASSOC. EASEMENT TO FOLLOW MEANDERING WALKWAY.

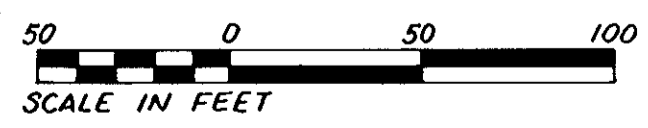
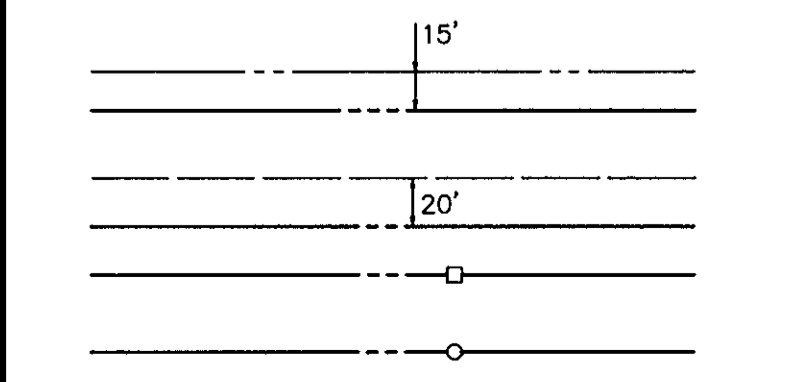
- NOTES:
1. OPEN SPACE / COMMON AREAS & PRIVATE R/W ARE TO BE CONVEYED TO THE COVENTRY HOMEOWNER'S ASSOCIATION.
  2. PROPERTY IDENTIFIED AS ASSESSOR'S PARCEL NO. 37-67.

APPROVED  
YORK COUNTY BOARD OF SUPERVISORS

BY: J. Mark Carter  
PLAT APPROVING AGENT

DATE: October 9, 1991

LEGEND



STATE OF VIRGINIA  
COUNTY OF YORK

IN THE CLERK'S OFFICE OF THE CIRCUIT COURT FOR THE COUNTY OF YORK THE 17<sup>th</sup> DAY OF October, 1991  
THIS MAP WAS PRESENTED AND ADMITTED TO RECORD AS THE LAW DIRECTS IN PLAT BOOK 11, PAGE 358.

TESTE: NANCY B. KANE, CLERK  
CLERK

BY: Carol Donnellman, Deputy Clerk  
4:23 P.M.