

APPROVED:
YORK COUNTY BOARD OF SUPERVISORS

BY: J. Mark Cates
PLAT APPROVING AGENT

DATE: JANUARY 14, 1992

PLAT OF SUBDIVISION
THE VILLAGES OF KILN CREEK
SINGLE FAMILY AREA 4

ROCK CREEK

COUNTY OF YORK, VIRGINIA

OCTOBER 14, 1991 SHEET 2 OF 3 SCALE: 1"=100'

SRA SLEDD, RUNEY & ASSOCIATES, P.C.
ENGINEERS • PLANNERS • SURVEYORS
11832 ROCK LANDING DRIVE, SUITE 203
NEWPORT NEWS, VIRGINIA 23606
(804)873-3386

STATE OF VIRGINIA
COUNTY OF YORK

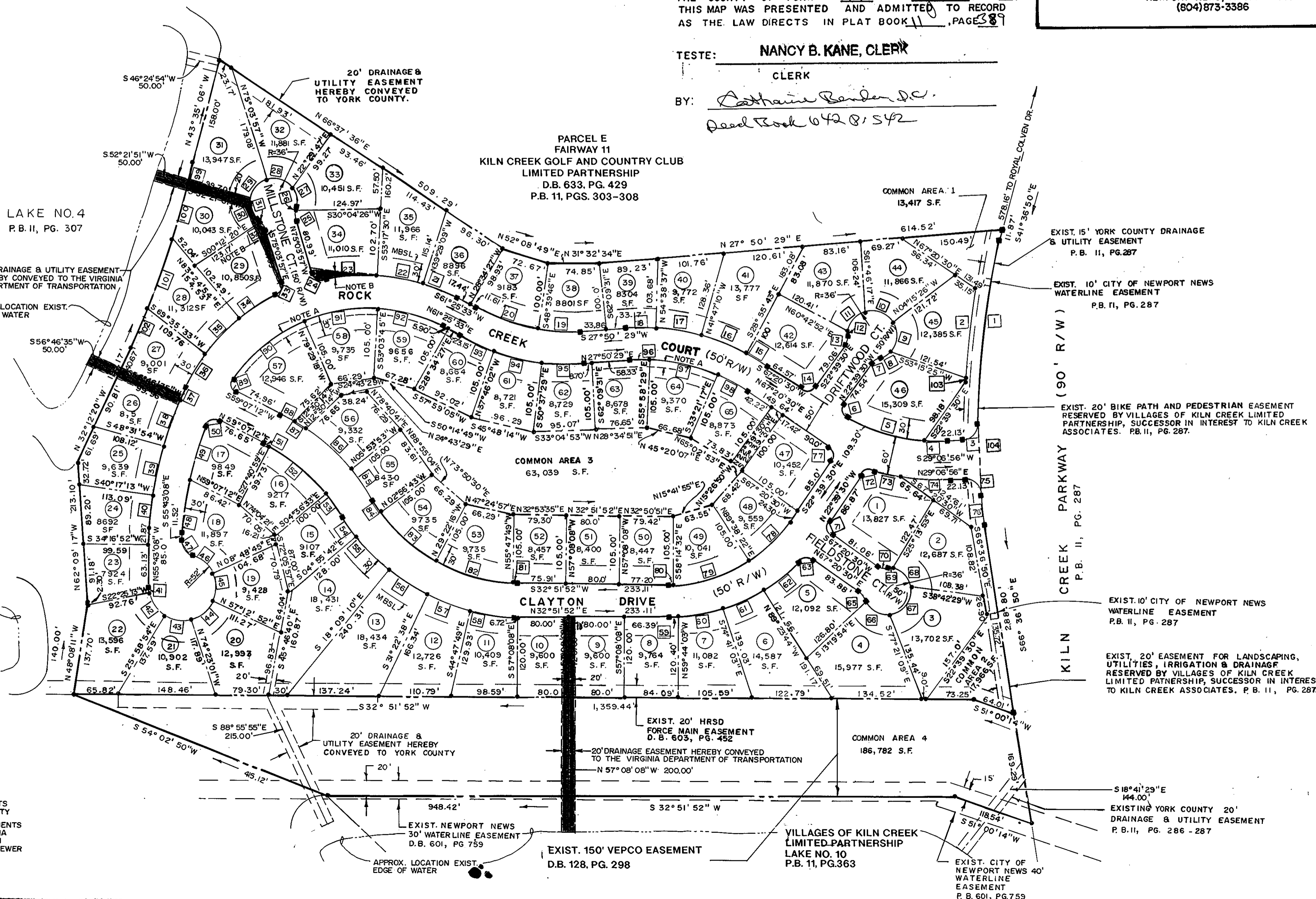
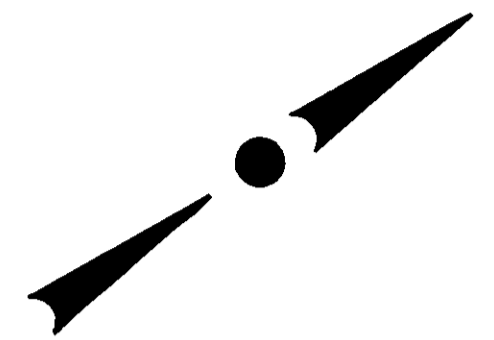
IN THE CLERK'S OFFICE OF THE CIRCUIT COURT FOR
THE COUNTY OF YORK THE 14 DAY OF Jan, 1992
THIS MAP WAS PRESENTED AND ADMITTED TO RECORD
AS THE LAW DIRECTS IN PLAT BOOK 11, PAGE 389

TESTE: NANCY B. KANE, CLERK

CLERK

BY: Catharine Bender, D.C.

Deed Book 642 @ 542



NOTES:
A. 10' DRAINAGE & UTILITY EASEMENTS
HEREBY CONVEYED TO YORK COUNTY
B. VARIABLE WIDTH DRAINAGE EASEMENTS
HEREBY CONVEYED TO THE VIRGINIA
DEPARTMENT OF TRANSPORTATION
(10' FROM CENTERLINE OF STORM SEWER
PIPE)

EXIST. 15' YORK COUNTY DRAINAGE
& UTILITY EASEMENT
P.B. II, PG. 287
EXIST. 10' CITY OF NEWPORT NEWS
WATERLINE EASEMENT
P.B. II, PG. 287
EXIST. 20' BIKE PATH AND PEDESTRIAN EASEMENT
RESERVED BY VILLAGES OF KILN CREEK LIMITED
PARTNERSHIP, SUCCESSOR IN INTEREST TO KILN CREEK
ASSOCIATES. P.B. II, PG. 287.
EXIST. 10' CITY OF NEWPORT NEWS
WATERLINE EASEMENT
P.B. II, PG. 287
EXIST. 20' EASEMENT FOR LANDSCAPING,
UTILITIES, IRRIGATION & DRAINAGE
RESERVED BY VILLAGES OF KILN CREEK
LIMITED PARTNERSHIP, SUCCESSOR IN INTEREST
TO KILN CREEK ASSOCIATES. P.B. II, PG. 287.
EXISTING YORK COUNTY 20'
DRAINAGE & UTILITY EASEMENT
P.B. II, PG. 286 - 287
EXIST. CITY OF
NEWPORT NEWS 40'
WATERLINE
EASEMENT
P.B. 601, PG. 759