

SEE SHEET 1 FOR NOTES

VIRGINIA: IN THE CLERK'S OFFICE OF THE CITY OF NEWPORT NEWS, THE _____ DAY OF _____, 1989, THIS PLAT WAS PRESENTED AND ADMITTED TO RECORD AS THE LAW DIRECTS IN PLAT BOOK _____, AT PAGE _____.

TESTE: _____, CLERK

STATE OF VIRGINIA COUNTY OF YORK
 IN THE CLERK'S OFFICE OF THE CIRCUIT COURT FOR THE COUNTY OF YORK, THE 2ND DAY OF June, 1989, THIS PLAT WAS PRESENTED AND ADMITTED TO RECORD AS THE LAW DIRECTS IN PLAT BOOK 11, PAGE 430.

TESTE: **NANCY B. KANE, CLERK**, CLERK

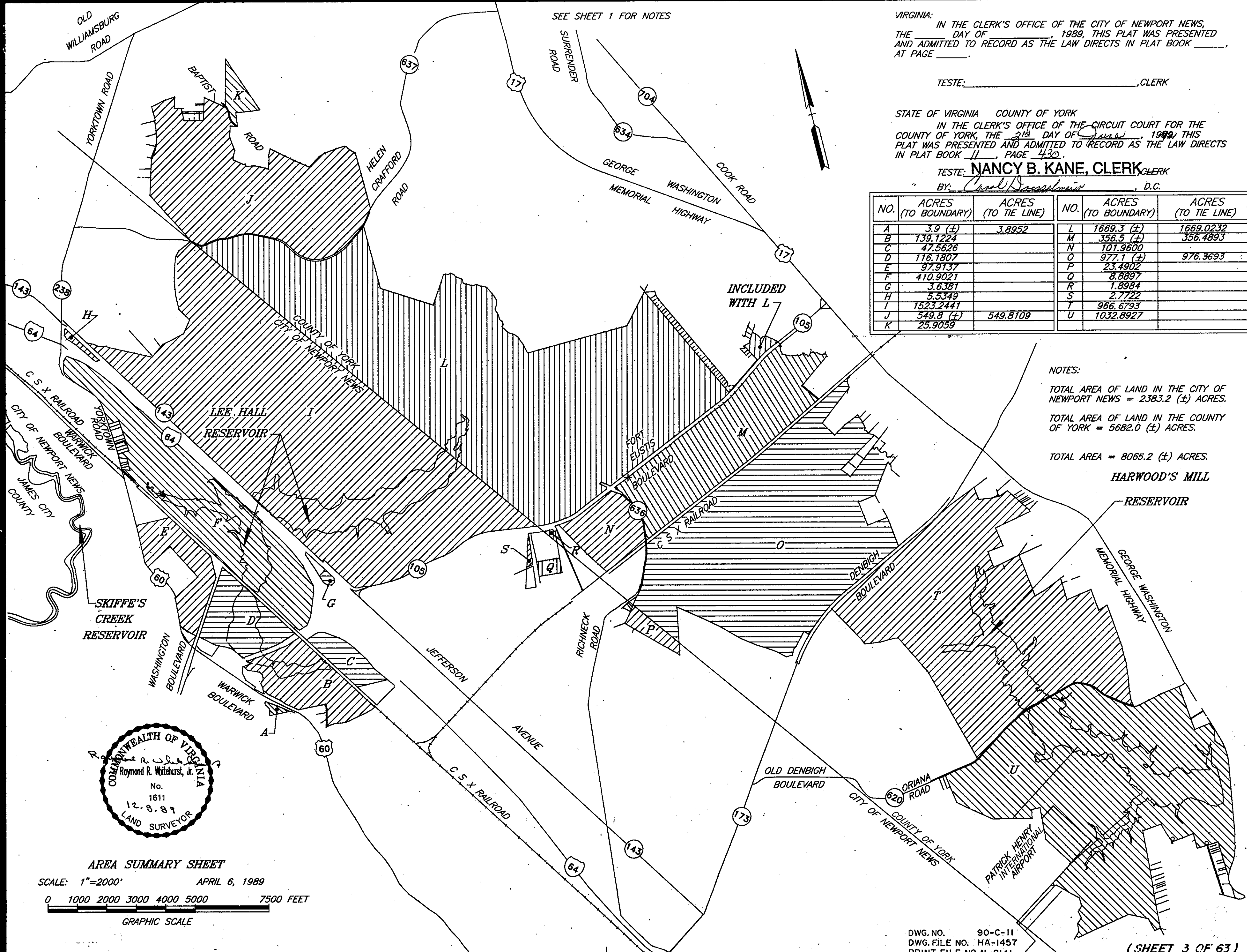
BY: Carol D. Bassilmeier, D.C.

NO.	ACRES (TO BOUNDARY)	ACRES (TO TIE LINE)	NO.	ACRES (TO BOUNDARY)	ACRES (TO TIE LINE)
A	3.9 (±)	3.8952	L	1669.3 (±)	1669.0232
B	139.1224		M	356.5 (±)	356.4893
C	47.5626		N	101.9600	
D	116.1807		O	977.1 (±)	976.3693
E	97.9137		P	23.4902	
F	410.9021		Q	8.8897	
G	3.6381		R	1.8984	
H	5.5349		S	2.7722	
I	1523.2441		T	966.6793	
J	549.8 (±)	549.8109	U	1032.8927	
K	25.9059				

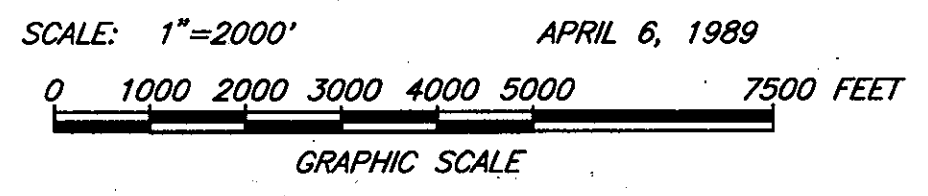
NOTES:
 TOTAL AREA OF LAND IN THE CITY OF NEWPORT NEWS = 2383.2 (±) ACRES.
 TOTAL AREA OF LAND IN THE COUNTY OF YORK = 5682.0 (±) ACRES.
 TOTAL AREA = 8065.2 (±) ACRES.

HARWOOD'S MILL

RESERVOIR



AREA SUMMARY SHEET



DWG. NO. 90-C-11
 DWG. FILE NO. HA-1457
 PRINT FILE NO. N-8141