

STATE OF VIRGINIA, COUNTY OF YORK
 IN THE CLERK'S OFFICE OF THE CIRCUIT COURT FOR THE
 COUNTY OF YORK, THE _____ DAY OF _____, 1989, THIS
 PLAT WAS PRESENTED AND ADMITTED TO RECORD AS THE LAW DIRECTS
 IN PLAT BOOK _____ PAGE _____

Filed in the Clerk's Office, Circuit Court, York Co., Va. SEE SHEET 1 FOR NOTES
 the 2nd day of June, 1989

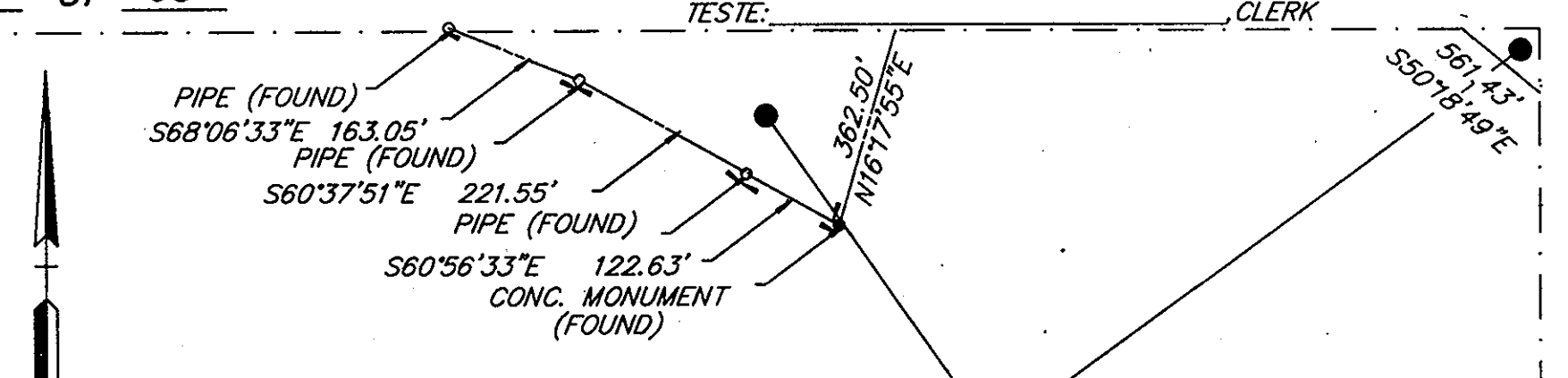
VIRGINIA:
 IN THE CLERK'S OFFICE OF THE CITY OF NEWPORT NEWS,
 THE _____ DAY OF _____, 1989, THIS PLAT WAS PRESENTED
 AND ADMITTED TO RECORD AS THE LAW DIRECTS IN PLAT BOOK _____
 AT PAGE _____

TESTE: _____, CLERK
 BY: _____, D.C.

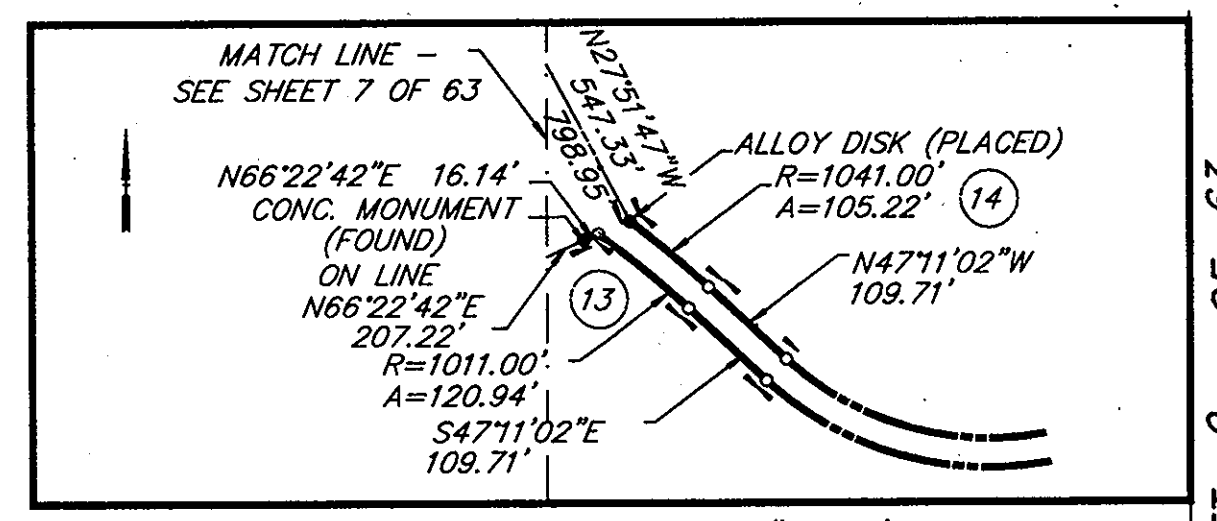
TESTE: Nancy B. Kane, Clerk
 Plat Book No. 11 Page 435
 MATCH LINE - SEE SHEET 6 OF 63



CURVE TABLE						
NO.	DELTA	RADIUS	ARC	TANGENT	CHORD	CH. BEARING
1	28°50'00"	725.00'	364.85'	186.37'	361.01'	S 48°16'29" E
2	28°50'00"	775.00'	390.01'	199.23'	385.91'	N 48°16'29" W
3	15°13'18"	600.00'	159.40'	80.17'	158.93'	S 71°44'26" E
4	15°13'18"	630.00'	167.37'	84.18'	166.88'	N 71°44'26" W
5	18°08'56"	1800.00'	570.16'	287.49'	567.78'	S 88°25'32" E
6	18°08'56"	1830.00'	579.66'	292.28'	577.24'	N 88°25'32" W
7	20°29'37"	450.00'	160.96'	81.35'	160.10'	N 87°15'12" W
8	20°29'37"	480.00'	171.69'	86.77'	170.77'	S 87°15'12" E
9	23°29'37"	1185.00'	485.90'	246.41'	482.50'	S 88°45'12" E
10	23°29'37"	1215.00'	498.20'	252.65'	494.72'	N 88°45'12" W
11	53°18'58"	310.00'	288.47'	155.63'	278.17'	N 73°50'31" W
12	53°18'58"	340.00'	316.39'	170.69'	305.09'	S 73°50'31" E
13	06°51'14"	1011.00'	120.94'	60.54'	120.87'	S 50°36'39" E
14	05°47'28"	1041.00'	105.22'	52.66'	105.18'	N 50°04'46" W



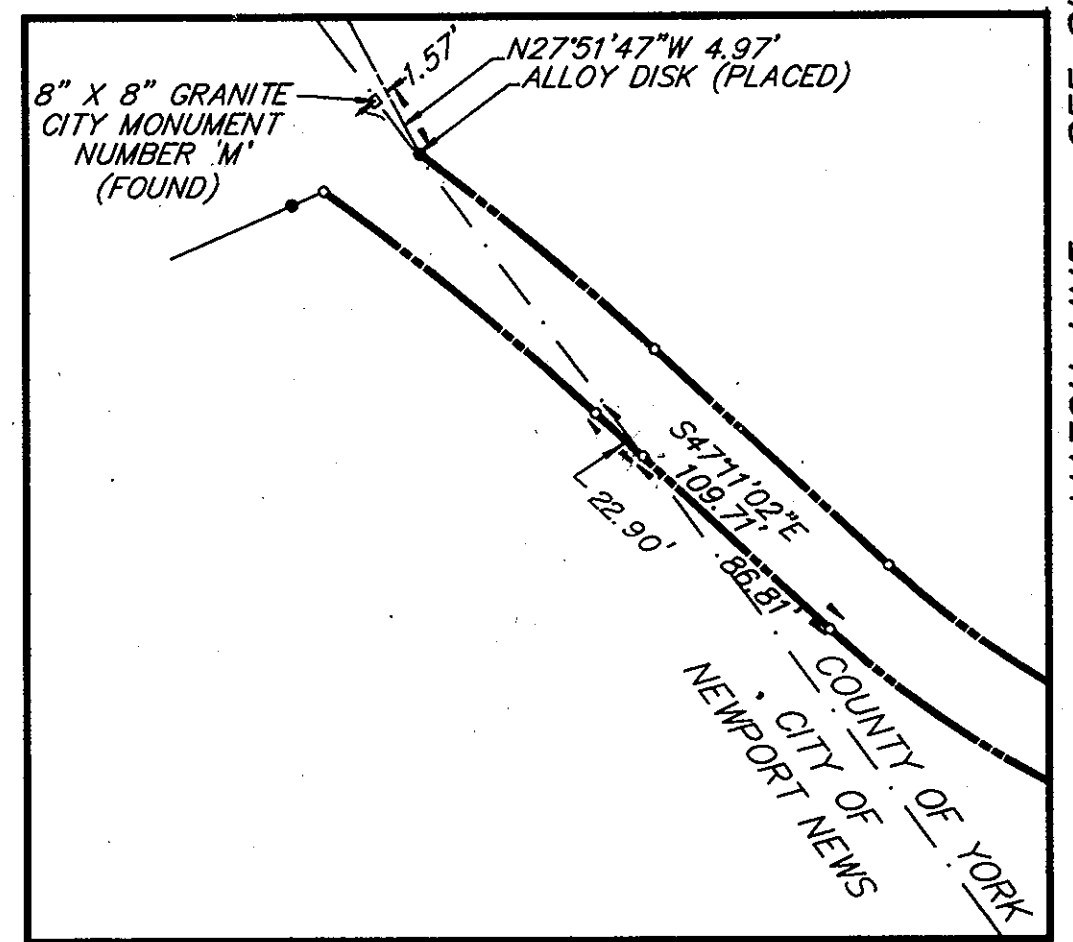
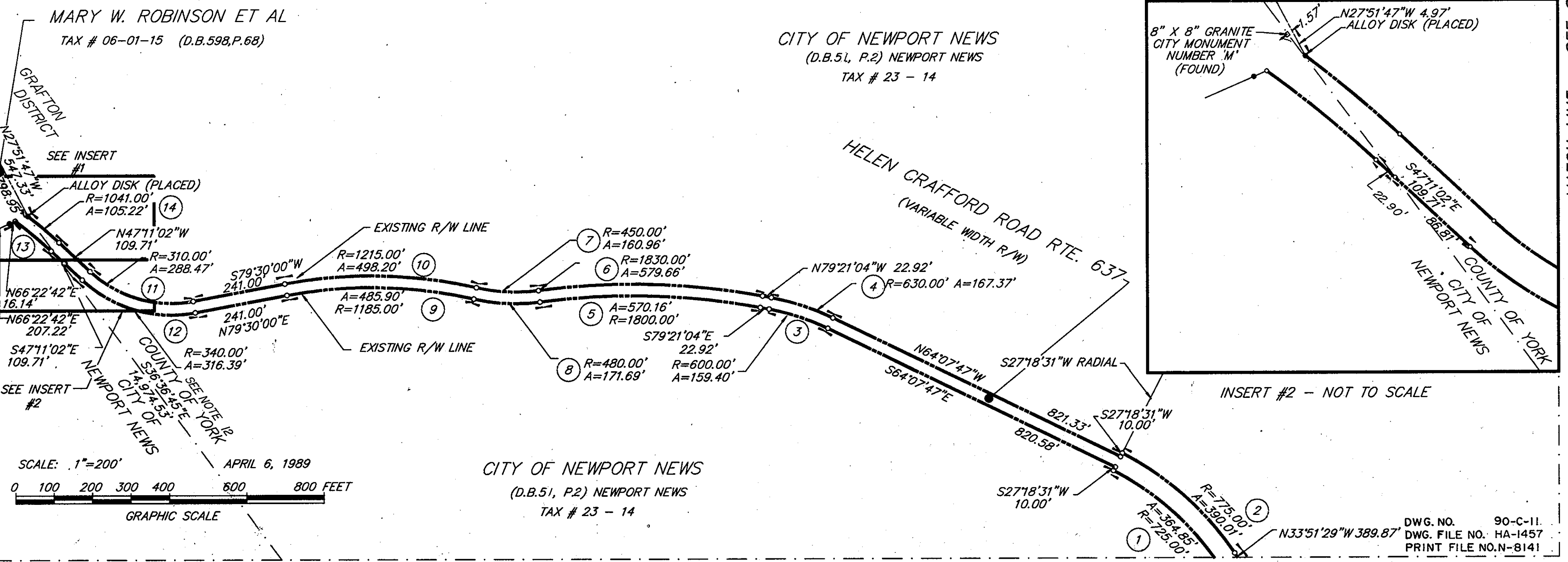
COLONIAL NATIONAL
 HISTORICAL PARK
 (P.B.1, P.274) YORK CO.
 (P.B.A, P.86) NEWPORT NEWS
 (D.B.67, P.311) NEWPORT NEWS
 TAX # 18 - 23



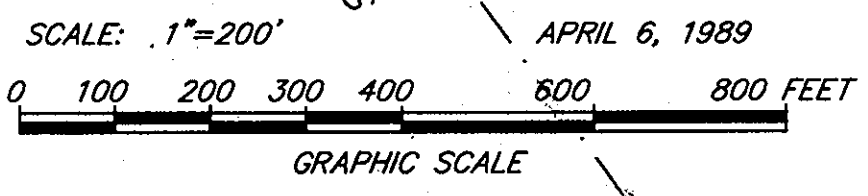
INSERT #1 - SCALE: 1"=200'

MATCH LINE - SEE SHEET 7 OF 63

MATCH LINE - SEE SHEET 9 OF 63



INSERT #2 - NOT TO SCALE



CITY OF NEWPORT NEWS
 (D.B.51, P.2) NEWPORT NEWS
 TAX # 23 - 14

DWG. NO. 90-C-11.
 DWG. FILE NO. HA-1457
 PRINT FILE NO. N-8141

MATCH LINE - SEE SHEET 12 OF 63