

SEE SHEET 1 FOR NOTES

STATE OF VIRGINIA COUNTY OF YORK  
IN THE CLERK'S OFFICE OF THE CIRCUIT COURT FOR THE  
COUNTY OF YORK, THE DAY OF 1989, THIS  
PLAT WAS PRESENTED AND ADMITTED TO RECORD AS THE LAW DIRECTS  
IN PLAT BOOK PAGE

Filed in the Clerk's Office, Circuit Court, York Co., Va.  
the day of 1989

Plat Book No. 11 Page 438

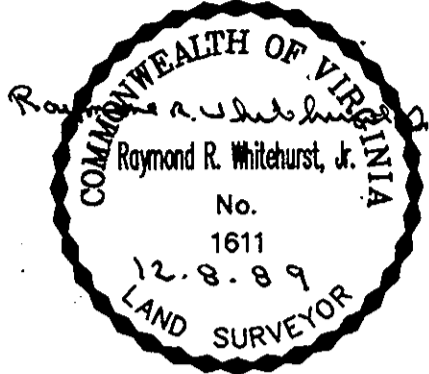
VIRGINIA:  
IN THE CLERK'S OFFICE OF THE CITY OF NEWPORT NEWS,  
THE DAY OF 1989, THIS PLAT WAS PRESENTED  
AND ADMITTED TO RECORD AS THE LAW DIRECTS IN PLAT BOOK  
AT PAGE

Teste: Nancy B. Kane, Clerk  
C. Ross

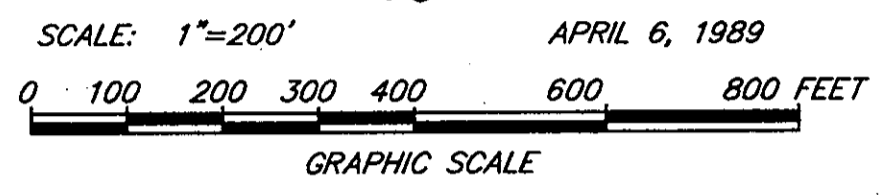
MATCH LINE - SEE SHEET 7 OF 63

TESTE: \_\_\_\_\_ CLERK

TESTE: \_\_\_\_\_ CLERK  
BY: \_\_\_\_\_ D.C.

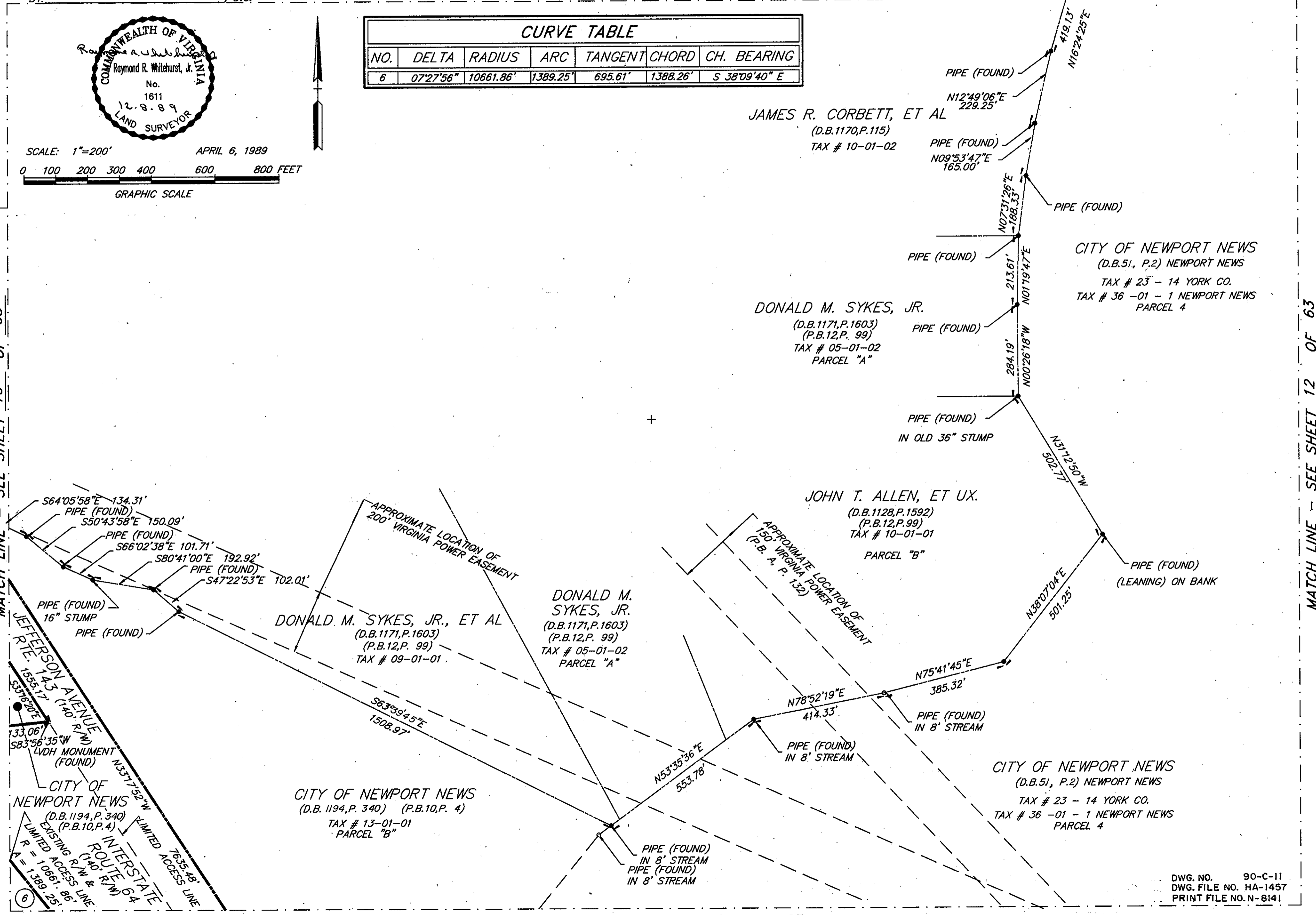


CURVE TABLE						
NO.	DELTA	RADIUS	ARC	TANGENT	CHORD	CH. BEARING
6	07°27'56"	10661.86'	1389.25'	695.61'	1388.26'	S 38°09'40" E



MATCH LINE - SEE SHEET 10 OF 63

MATCH LINE - SEE SHEET 12 OF 63



DWG. NO. 90-C-11  
DWG. FILE NO. HA-1457  
PRINT FILE NO. N-8141

MATCH LINE - SEE SHEET 16 OF 63

(SHEET 11 OF 63)