

STATE OF VIRGINIA COUNTY OF YORK
 IN THE CLERK'S OFFICE OF THE CIRCUIT COURT FOR THE
 COUNTY OF YORK, THE _____ DAY OF _____, 1989, THIS
 PLAT WAS PRESENTED AND ADMITTED TO RECORD AS THE LAW DIRECTS
 IN PLAT BOOK _____ PAGE _____

SEE SHEET 1 FOR NOTES

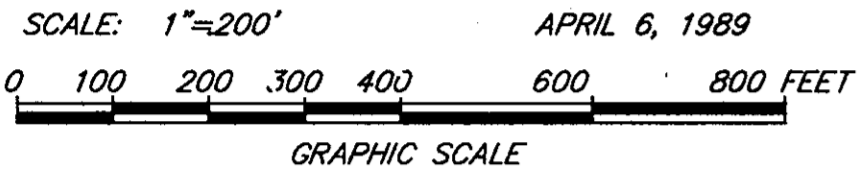
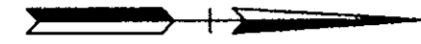
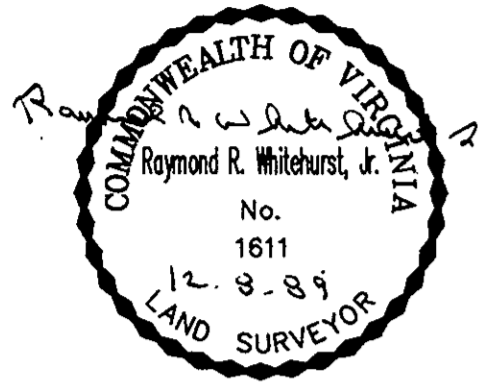
Filed in the Clerk's Office, Circuit Court, York Co., Va.
 the _____ day of _____, 19____
 Teste: Nancy B. Kane, Clerk
 _____ D.C.

VIRGINIA:
 IN THE CLERK'S OFFICE OF THE CITY OF NEWPORT NEWS,
 THE _____ DAY OF _____, 1989, THIS PLAT WAS PRESENTED
 AND ADMITTED TO RECORD AS THE LAW DIRECTS IN PLAT BOOK _____
 AT PAGE _____

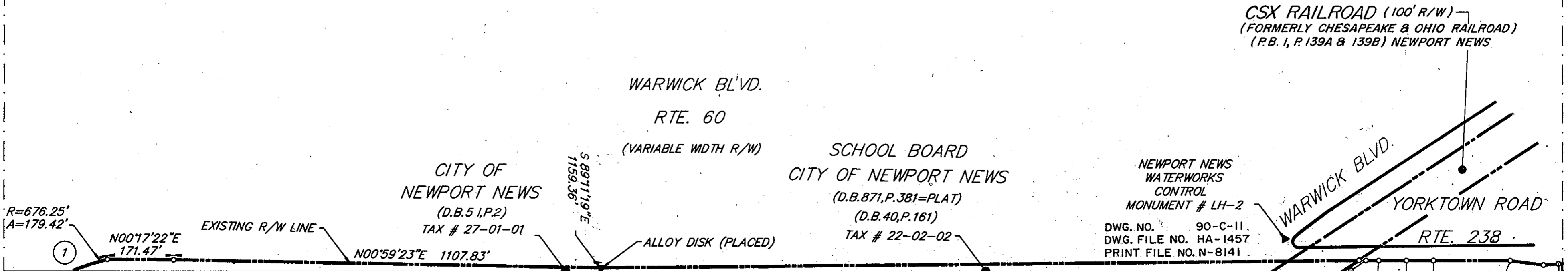
TESTE: _____, CLERK
 BY: _____, D.C.

Plat Book No. 11 Page 442

TESTE: _____, CLERK



CURVE TABLE						
NO.	DELTA	RADIUS	ARC	TANGENT	CHORD	CH. BEARING
1	151°2'04"	676.25'	179.42'	90.24'	178.89'	N 21°17'52" W



MATCH LINE - SEE SHEET 10 OF 63

MATCH LINE - SEE SHEET 27 OF 63

(SHEET 15 OF 63)

MATCH LINE - SEE SHEET 21 OF 63

MATCH LINE - SEE SHEET 16 OF 63