

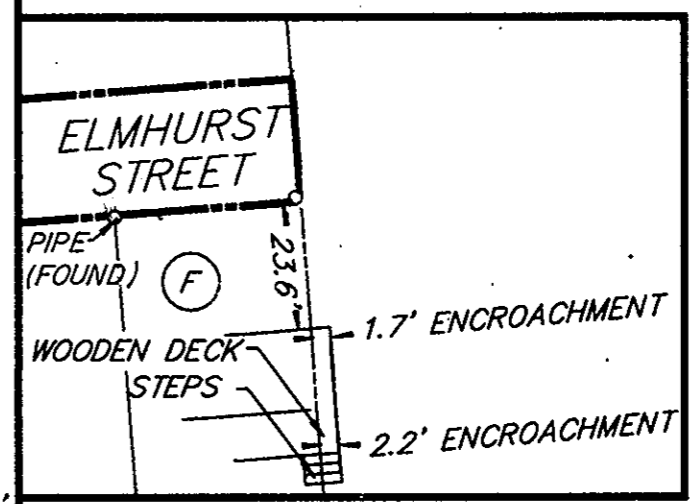
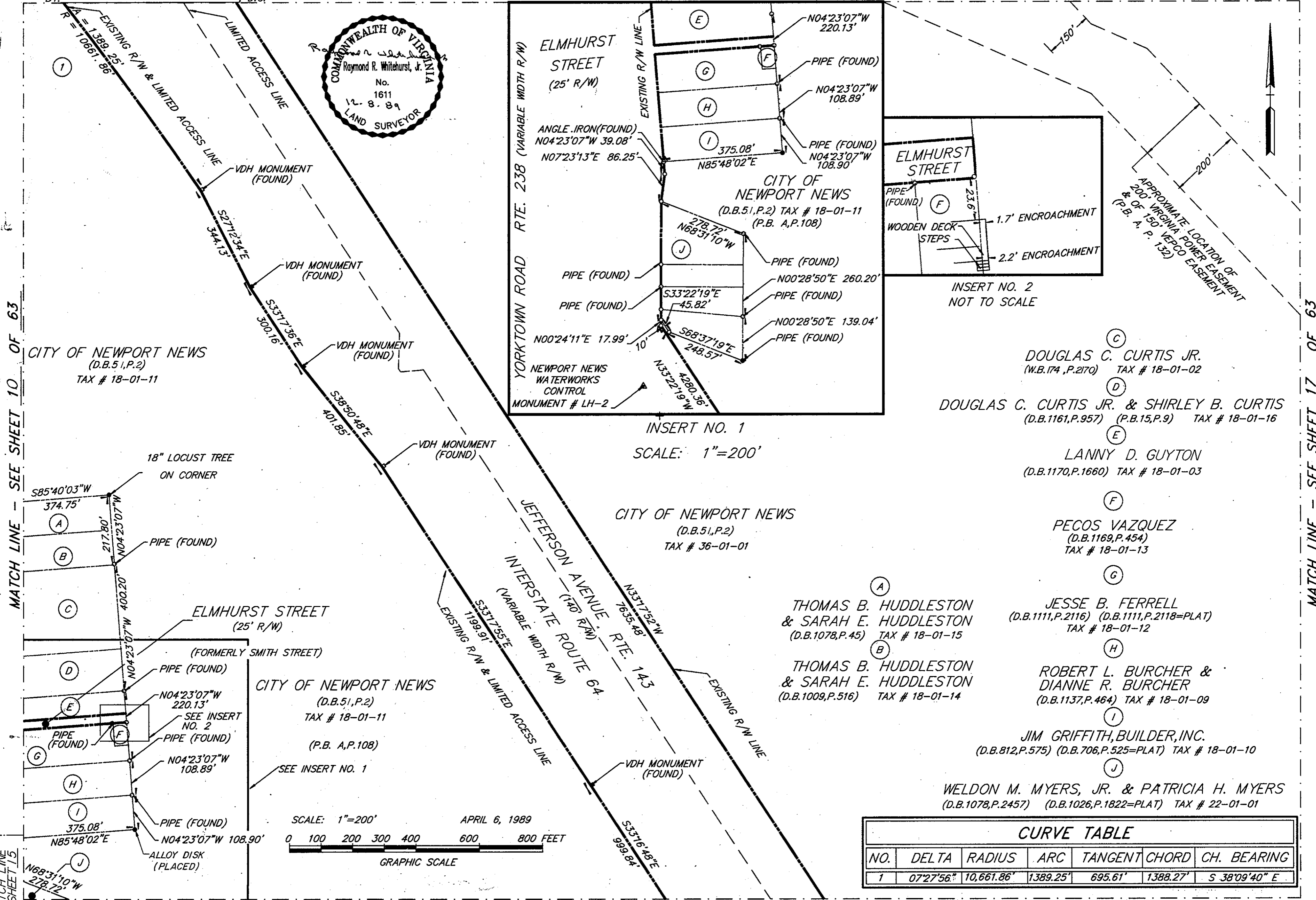
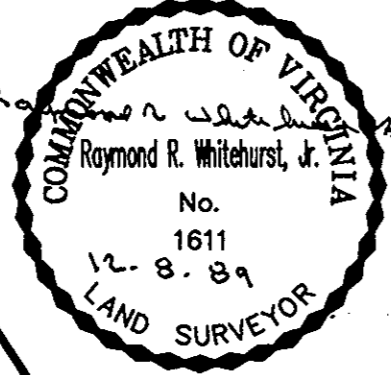
STATE OF VIRGINIA COUNTY OF YORK
IN THE CLERK'S OFFICE OF THE CIRCUIT COURT FOR THE
COUNTY OF YORK, THE DAY OF 1989, THIS
PLAT WAS PRESENTED AND ADMITTED TO RECORD AS THE LAW DIRECTS
IN PLAT BOOK PAGE

Filed in the Clerk's Office, Circuit Court, York Co., VA SEE SHEET 1 FOR NOTES
the day of 1989
Teste: Nancy B. Kane, Clerk
Carol D. [Signature] D.C.
MATCH LINE - SEE SHEET 11 OF 63

VIRGINIA:
IN THE CLERK'S OFFICE OF THE CITY OF NEWPORT NEWS,
THE DAY OF 1989, THIS PLAT WAS PRESENTED
AND ADMITTED TO RECORD AS THE LAW DIRECTS IN PLAT BOOK
AT PAGE

TESTE: _____ CLERK
BY: _____ D.C.

TESTE: _____ CLERK

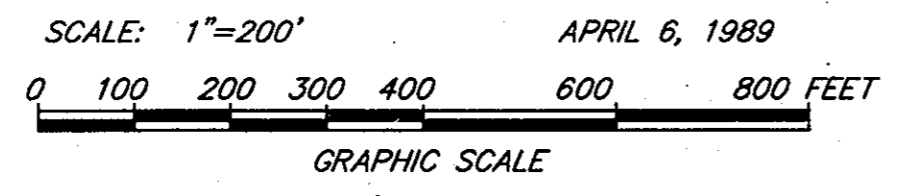


INSERT NO. 2
NOT TO SCALE

INSERT NO. 1
SCALE: 1"=200'

- (C) DOUGLAS C. CURTIS JR.
(W.B.174, P.2170) TAX # 18-01-02
- (D) DOUGLAS C. CURTIS JR. & SHIRLEY B. CURTIS
(D.B.1161, P.957) (P.B.15, P.9) TAX # 18-01-16
- (E) LANNY D. GUYTON
(D.B.1170, P.1660) TAX # 18-01-03
- (F) PECOS VAZQUEZ
(D.B.1169, P.454) TAX # 18-01-13
- (G) JESSE B. FERRELL
(D.B.1111, P.2116) (D.B.1111, P.2118=PLAT) TAX # 18-01-12
- (H) ROBERT L. BURCHER & DIANNE R. BURCHER
(D.B.1137, P.464) TAX # 18-01-09
- (I) JIM GRIFFITH, BUILDER, INC.
(D.B.812, P.575) (D.B.706, P.525=PLAT) TAX # 18-01-10
- (J) WELDON M. MYERS, JR. & PATRICIA H. MYERS
(D.B.1078, P.2457) (D.B.1026, P.1822=PLAT) TAX # 22-01-01

- (A) THOMAS B. HUDDLESTON & SARAH E. HUDDLESTON
(D.B.1078, P.45) TAX # 18-01-15
- (B) THOMAS B. HUDDLESTON & SARAH E. HUDDLESTON
(D.B.1009, P.516) TAX # 18-01-14



| CURVE TABLE | | | | | | |
|-------------|-----------|------------|----------|---------|----------|---------------|
| NO. | DELTA | RADIUS | ARC | TANGENT | CHORD | CH. BEARING |
| 1 | 07°27'56" | 10,661.86' | 1389.25' | 695.61' | 1388.27' | S 38°09'40" E |

MATCH LINE - SEE SHEET 10 OF 63

MATCH LINE - SEE SHEET 17 OF 63

MATCH LINE - SEE SHEET 21 OF 63