

STATE OF VIRGINIA COUNTY OF YORK
 IN THE CLERK'S OFFICE OF THE CIRCUIT COURT FOR THE
 COUNTY OF YORK, THE DAY OF 1989, THIS
 PLAT WAS PRESENTED AND ADMITTED TO RECORD AS THE LAW DIRECTS
 IN PLAT BOOK PAGE

Filed in the Clerk's Office, Circuit Court, York Co., Va.
 the 2nd day of June 1989 SEE SHEET 1 FOR NOTES

VIRGINIA: IN THE CLERK'S OFFICE OF THE CITY OF NEWPORT NEWS,
 THE DAY OF 1989, THIS PLAT WAS PRESENTED
 AND ADMITTED TO RECORD AS THE LAW DIRECTS IN PLAT BOOK
 AT PAGE

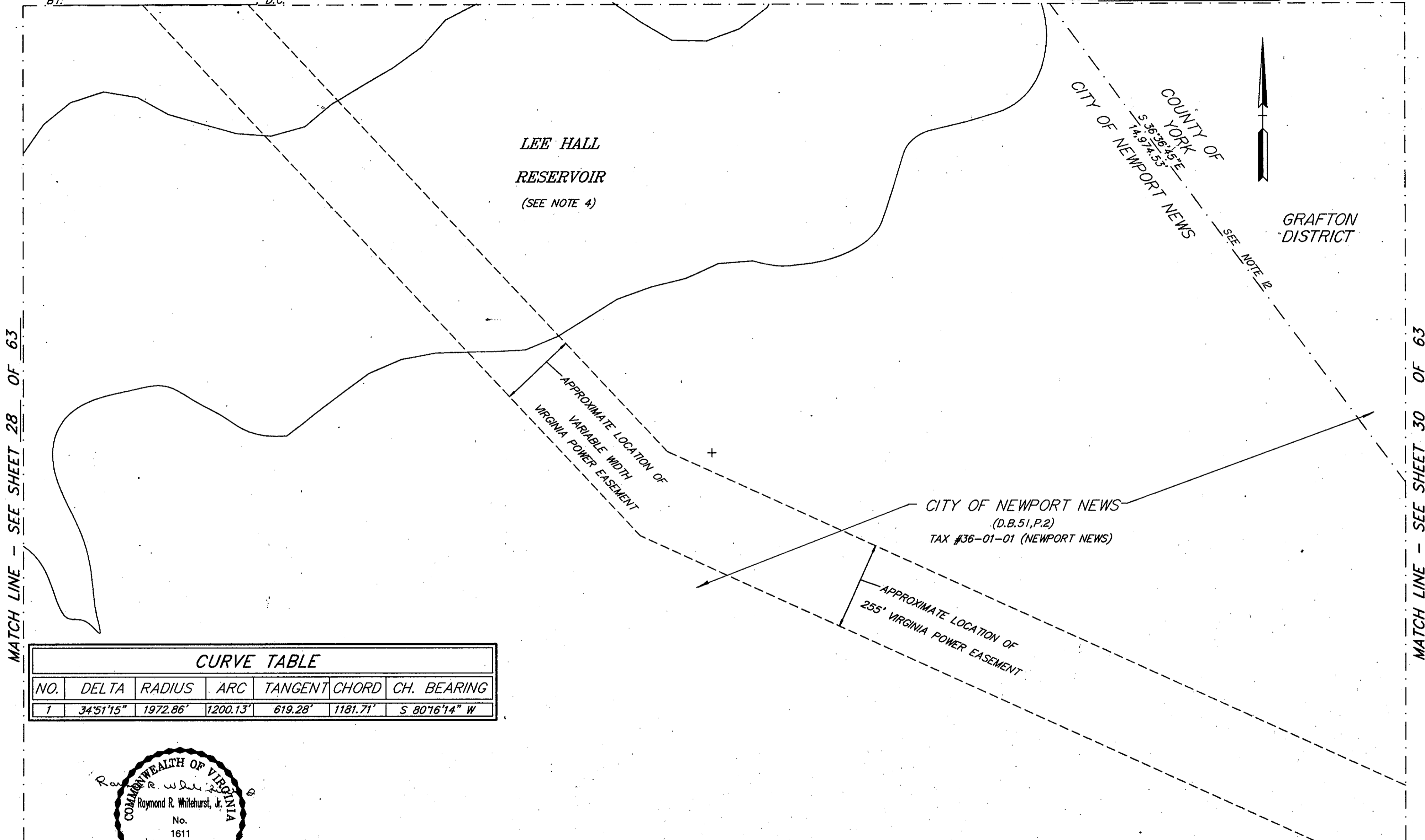
Teste: Nancy B. Kane, Clerk
 Carol Drossler D.C.

Plat Book No. 11 Page 456

MATCH LINE - SEE SHEET 23 OF 63

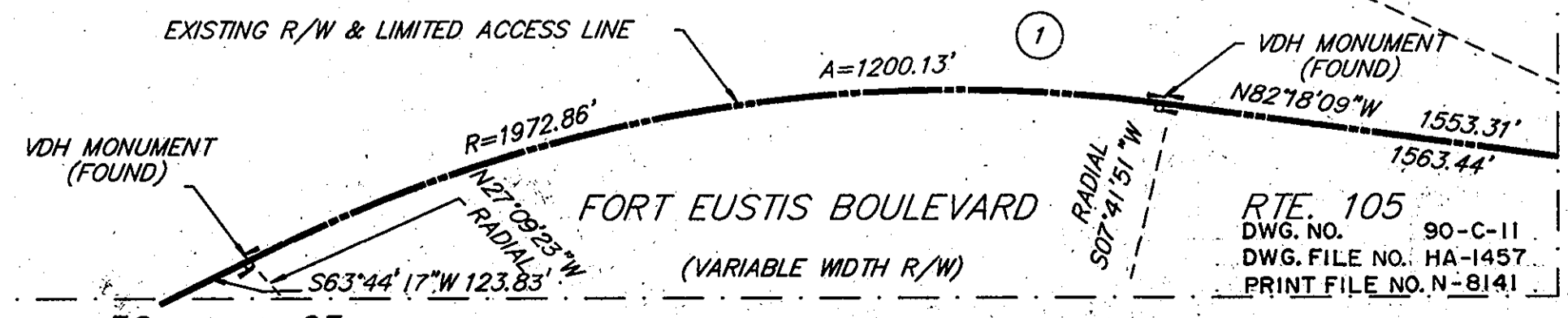
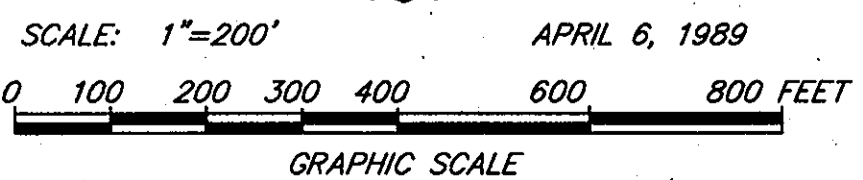
TESTE: _____, CLERK
 BY: _____, D.C.

TESTE: _____, CLERK



CURVE TABLE

NO.	DELTA	RADIUS	ARC	TANGENT	CHORD	CH. BEARING
1	34°51'15"	1972.86'	1200.13'	619.28'	1181.71'	S 80°16'14" W



MATCH LINE - SEE SHEET 36 OF 63