

STATE OF VIRGINIA COUNTY OF YORK
 IN THE CLERK'S OFFICE OF THE CIRCUIT COURT FOR THE
 COUNTY OF YORK, THE DAY OF 1989, THIS
 PLAT WAS PRESENTED AND ADMITTED TO RECORD AS THE LAW DIRECTS
 IN PLAT BOOK PAGE

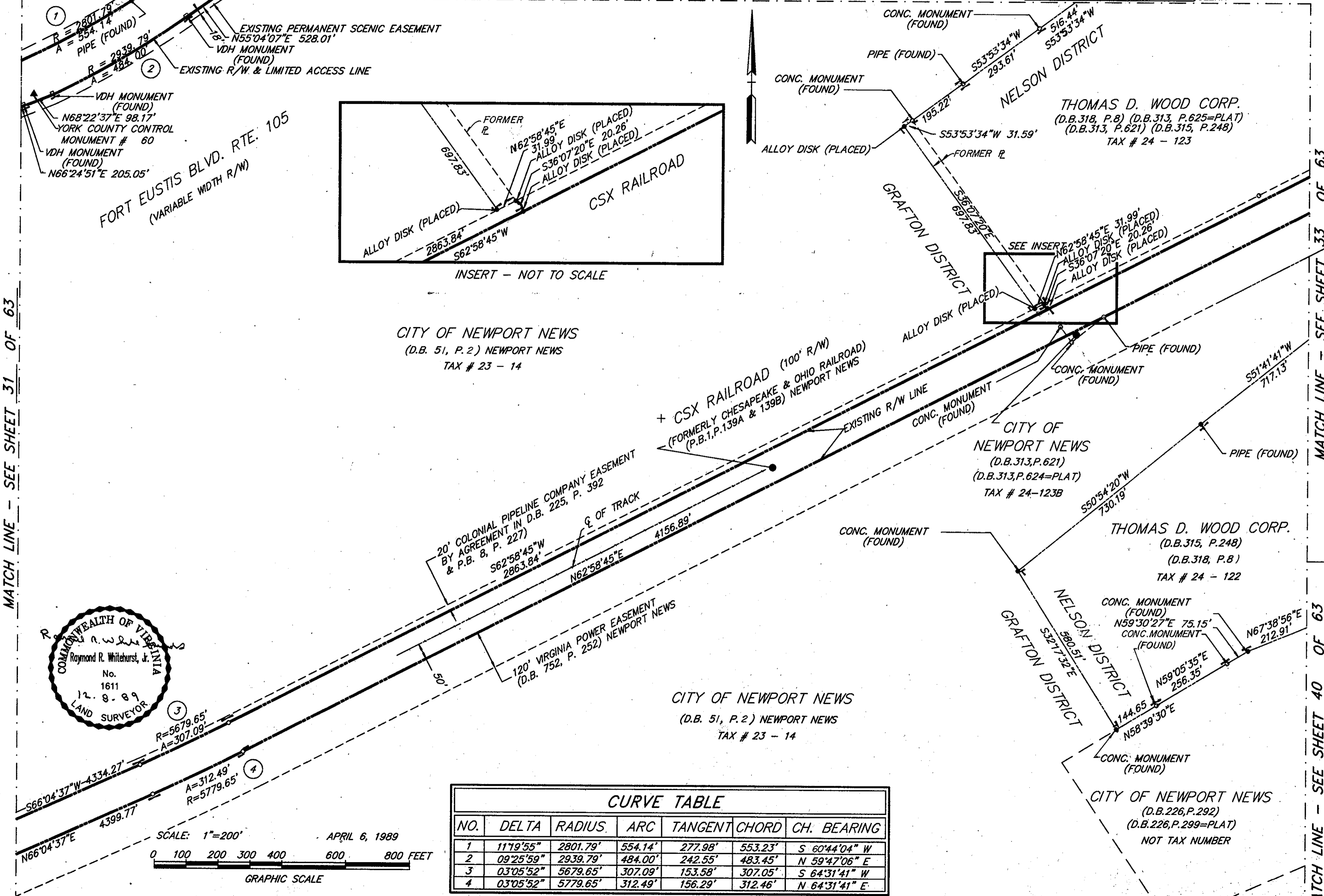
Filed in the Clerk's Office, Circuit Court, York Co., Va. SEE SHEET 1 FOR NOTES
 the 2nd day of June 1992

VIRGINIA:
 IN THE CLERK'S OFFICE OF THE CITY OF NEWPORT NEWS,
 THE DAY OF 1989, THIS PLAT WAS PRESENTED
 AND ADMITTED TO RECORD AS THE LAW DIRECTS IN PLAT BOOK
 AT PAGE

Teste: Nancy B. Kane, Clerk
 Plat Book No. 11 Page 459
 MATCH LINE - SEE SHEET 26 OF 63

TESTE: _____ CLERK
 BY: _____ D.C.

TESTE: _____ CLERK



MATCH LINE - SEE SHEET 31 OF 63

MATCH LINE - SEE SHEET 33 OF 63
 MATCH LINE - SEE SHEET 40 OF 63

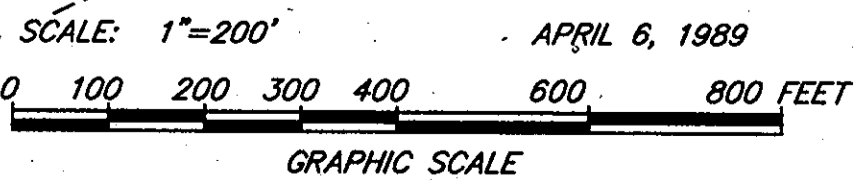
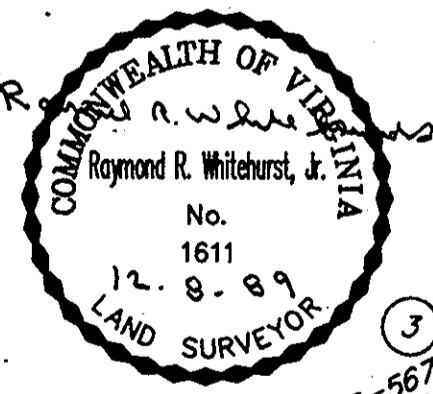
CITY OF NEWPORT NEWS
 (D.B. 51, P. 2) NEWPORT NEWS
 TAX # 23 - 14

CITY OF NEWPORT NEWS
 (D.B. 313, P. 621)
 (D.B. 313, P. 624=PLAT)
 TAX # 24-123B

THOMAS D. WOOD CORP.
 (D.B. 315, P. 248)
 (D.B. 318, P. 8)
 TAX # 24 - 122

CITY OF NEWPORT NEWS
 (D.B. 51, P. 2) NEWPORT NEWS
 TAX # 23 - 14

CITY OF NEWPORT NEWS
 (D.B. 226, P. 292)
 (D.B. 226, P. 299=PLAT)
 NOT TAX NUMBER



CURVE TABLE						
NO.	DELTA	RADIUS	ARC	TANGENT	CHORD	CH. BEARING
1	11°19'55"	2801.79'	554.14'	277.98'	553.23'	S 60°44'04" W
2	09°25'59"	2939.79'	484.00'	242.55'	483.45'	N 59°47'06" E
3	03°05'52"	5679.65'	307.09'	153.58'	307.05'	S 64°31'41" W
4	03°05'52"	5779.65'	312.49'	156.29'	312.46'	N 64°31'41" E

MATCH LINE - SEE SHEET 39 OF 63