

STATE OF VIRGINIA COUNTY OF YORK  
 IN THE CLERK'S OFFICE OF THE CIRCUIT COURT FOR THE  
 COUNTY OF YORK, THE DAY OF 1989, THIS  
 PLAT WAS PRESENTED AND ADMITTED TO RECORD AS THE LAW DIRECTS  
 IN PLAT BOOK PAGE

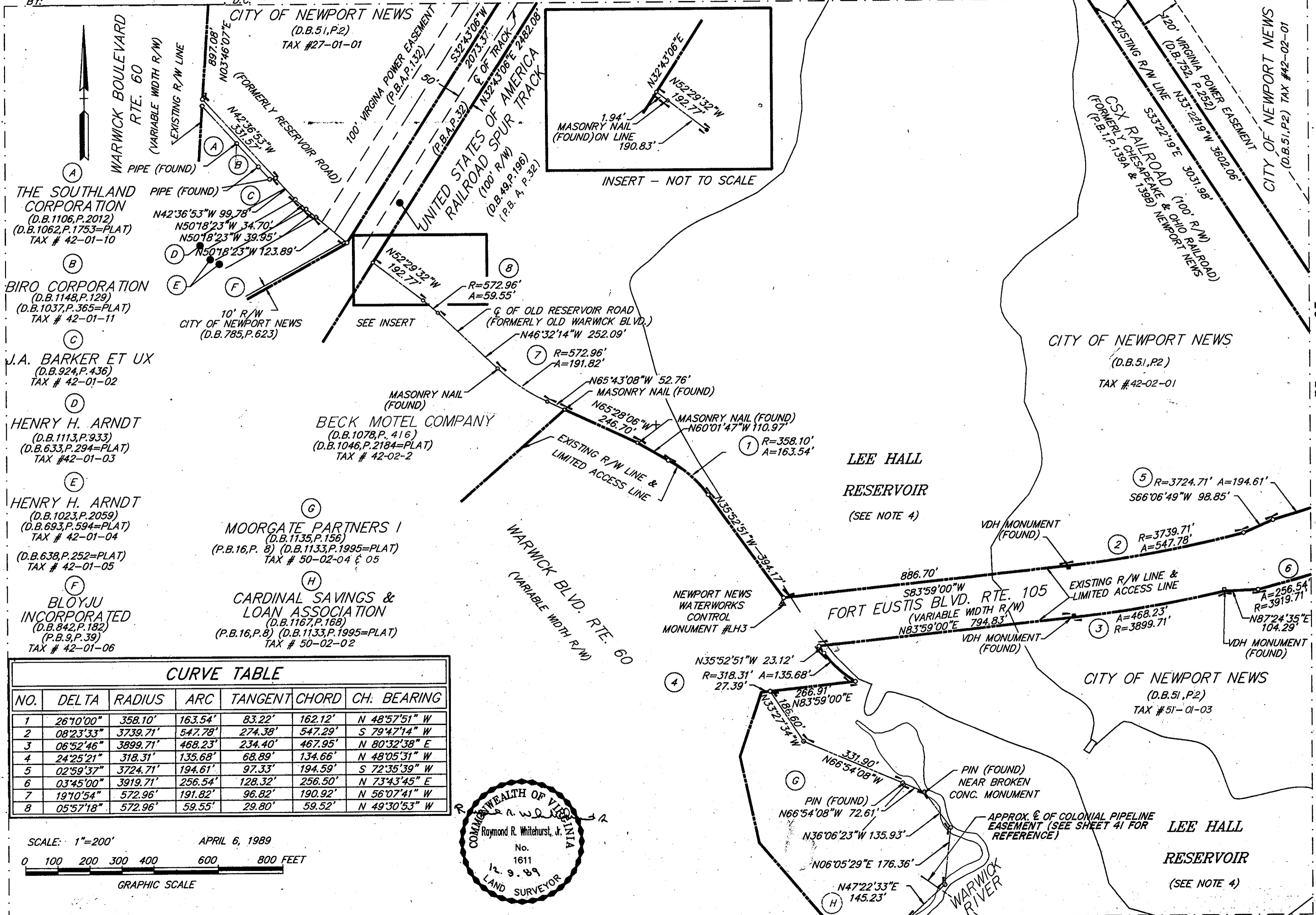
Filed in the Clerk's Office, Circuit Court, York Co., Va. SEE SHEET 1 FOR NOTES  
 the 24th day of June 1989  
 Teste: Nancy B. Kane, Clerk  
 Plat Book No. 11 Page 461

VIRGINIA:  
 IN THE CLERK'S OFFICE OF THE CITY OF NEWPORT NEWS,  
 THE DAY OF 1989, THIS PLAT WAS PRESENTED  
 AND ADMITTED TO RECORD AS THE LAW DIRECTS IN PLAT BOOK  
 AT PAGE

TESTE: \_\_\_\_\_, CLERK  
 BY: \_\_\_\_\_, D.C.

MATCH LINE - SEE SHEET 27 OF 63

TESTE: \_\_\_\_\_, CLERK



THE SOUTHLAND CORPORATION  
 (D.B.1106,P.2012)  
 (D.B.1062,P.1753=PLAT)  
 TAX # 42-01-10

BIRO CORPORATION  
 (D.B.1148,P.129)  
 (D.B.1037,P.365=PLAT)  
 TAX # 42-01-11

J.A. BARKER ET UX  
 (D.B.924,P.436)  
 TAX # 42-01-02

HENRY H. ARNDT  
 (D.B.1113,P.933)  
 (D.B.633,P.294=PLAT)  
 TAX # 42-01-03

HENRY H. ARNDT  
 (D.B.1023,P.2059)  
 (D.B.693,P.594=PLAT)  
 TAX # 42-01-04

(D.B.638,P.252=PLAT)  
 TAX # 42-01-05

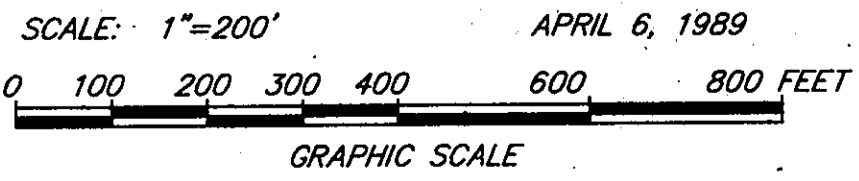
BLOYJU INCORPORATED  
 (D.B.842,P.182)  
 (P.B.9,P.39)  
 TAX # 42-01-06

MOORGATE PARTNERS I  
 (D.B.1135,P.156)  
 (P.B.16,P.8) (D.B.1133,P.1995=PLAT)  
 TAX # 50-02-04 & 05

CARDINAL SAVINGS & LOAN ASSOCIATION  
 (D.B.1167,P.168)  
 (P.B.16,P.8) (D.B.1133,P.1995=PLAT)  
 TAX # 50-02-02

BECK MOTEL COMPANY  
 (D.B.1078,P.416)  
 (D.B.1046,P.2184=PLAT)  
 TAX # 42-02-2

| NO. | DELTA     | RADIUS   | ARC     | TANGENT | CHORD   | CH. BEARING   |
|-----|-----------|----------|---------|---------|---------|---------------|
| 1   | 26°10'00" | 358.10'  | 163.54' | 83.22'  | 162.12' | N 48°57'51" W |
| 2   | 08°23'33" | 3739.71' | 547.78' | 274.38' | 547.29' | S 79°47'14" W |
| 3   | 06°52'46" | 3899.71' | 468.23' | 234.40' | 467.95' | N 80°32'38" E |
| 4   | 24°25'21" | 318.31'  | 135.68' | 68.89'  | 134.66' | N 48°05'31" W |
| 5   | 02°59'37" | 3724.71' | 194.61' | 97.33'  | 194.59' | S 72°35'39" W |
| 6   | 03°45'00" | 3919.71' | 256.54' | 128.32' | 256.50' | N 73°43'45" E |
| 7   | 19°10'54" | 572.96'  | 191.82' | 96.82'  | 190.92' | N 56°07'41" W |
| 8   | 05°57'18" | 572.96'  | 59.55'  | 29.80'  | 59.52'  | N 49°30'53" W |



MATCH LINE - SEE SHEET 41 OF 63