

STATE OF VIRGINIA COUNTY OF YORK  
IN THE CLERK'S OFFICE OF THE CIRCUIT COURT FOR THE  
COUNTY OF YORK, THE DAY OF 1989, THIS  
PLAT WAS PRESENTED AND ADMITTED TO RECORD AS THE LAW DIRECTS  
IN PLAT BOOK PAGE

Filed in the Clerk's Office, Circuit Court, York Co., Va. SEE SHEET 1 FOR NOTES  
the day of June 19 1989

VIRGINIA:  
IN THE CLERK'S OFFICE OF THE CITY OF NEWPORT NEWS,  
THE DAY OF 1989, THIS PLAT WAS PRESENTED  
AND ADMITTED TO RECORD AS THE LAW DIRECTS IN PLAT BOOK  
AT PAGE

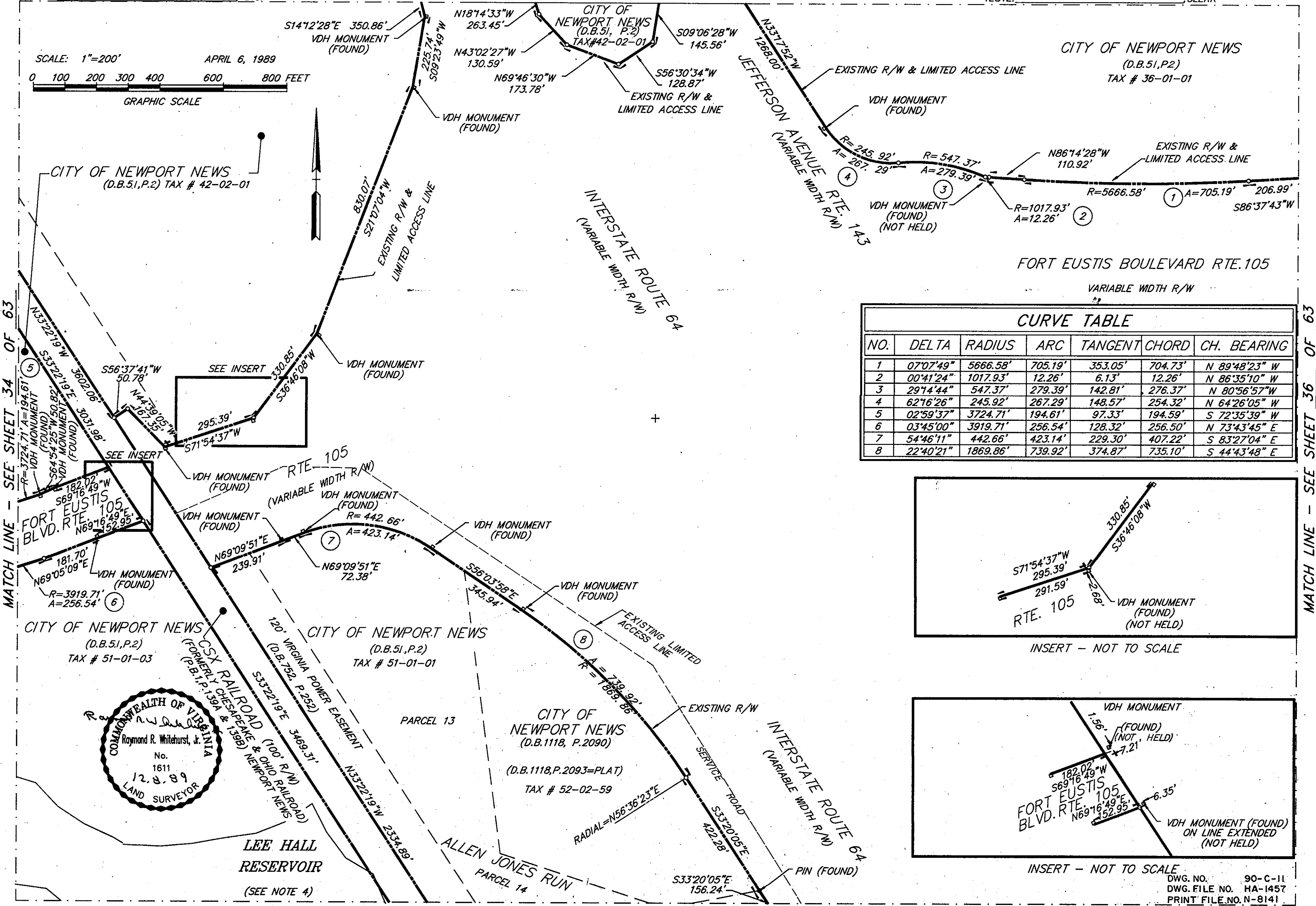
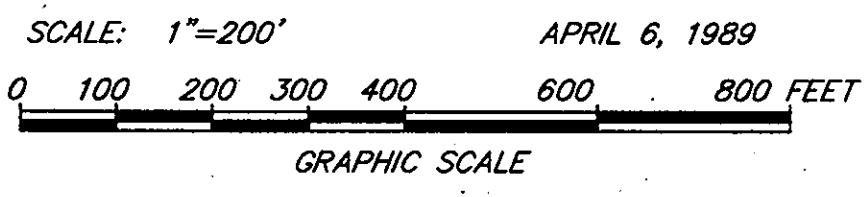
TESTE: \_\_\_\_\_ CLERK  
BY: \_\_\_\_\_ D.C.

Teste: Nancy B. Kane, Clerk  
*Carol D. Swanson* DC

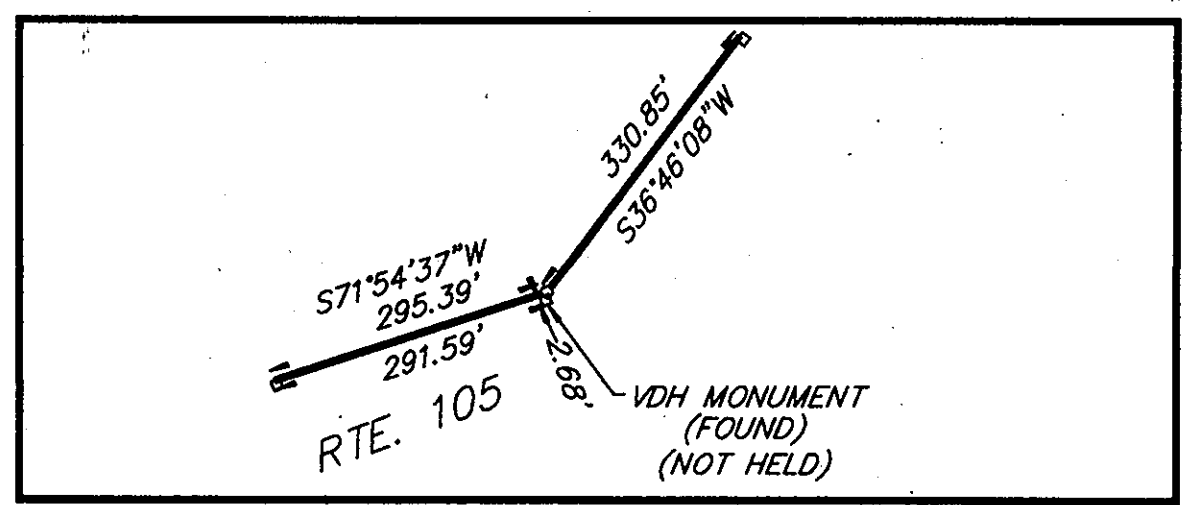
Plat Book No. 11 Page 462

TESTE: \_\_\_\_\_ CLERK

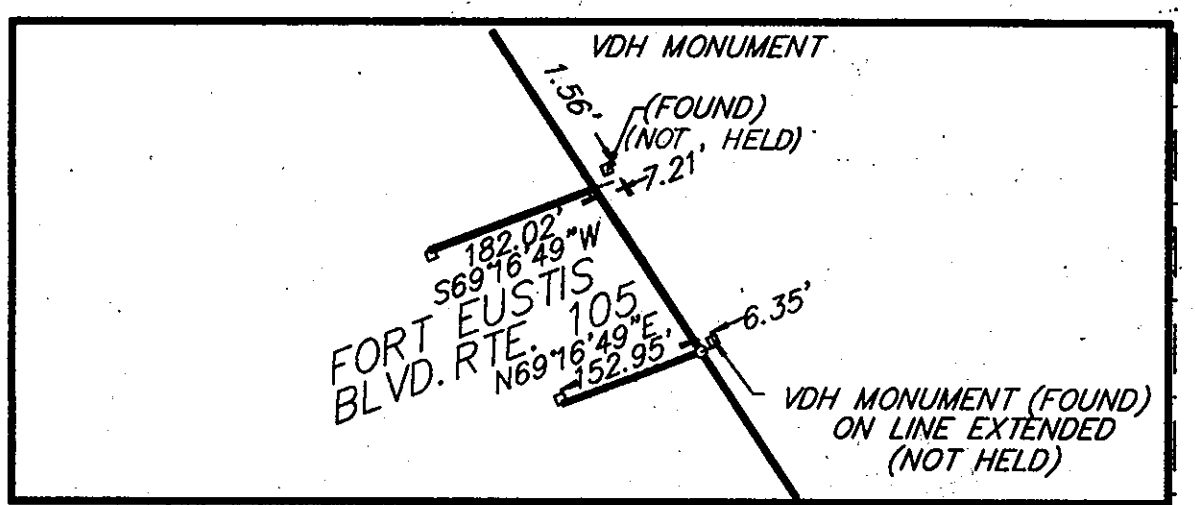
MATCH LINE - SEE SHEET 28 OF 63



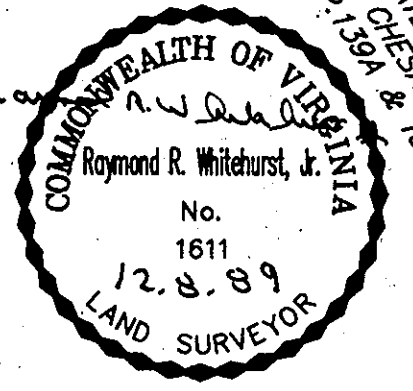
CURVE TABLE						
NO.	DELTA	RADIUS	ARC	TANGENT	CHORD	CH. BEARING
1	07°07'49"	5666.58'	705.19'	353.05'	704.73'	N 89°48'23" W
2	00°41'24"	1017.93'	12.26'	6.13'	12.26'	N 86°35'10" W
3	29°14'44"	547.37'	279.39'	142.81'	276.37'	N 80°56'57" W
4	62°16'26"	245.92'	267.29'	148.57'	254.32'	N 64°26'05" W
5	02°59'37"	3724.71'	194.61'	97.33'	194.59'	S 72°35'39" W
6	03°45'00"	3919.71'	256.54'	128.32'	256.50'	N 73°43'45" E
7	54°46'11"	442.66'	423.14'	229.30'	407.22'	S 83°27'04" E
8	22°40'21"	1869.86'	739.92'	374.87'	735.10'	S 44°43'48" E



INSERT - NOT TO SCALE



INSERT - NOT TO SCALE



MATCH LINE - SEE SHEET 34 OF 63

MATCH LINE - SEE SHEET 36 OF 63

MATCH LINE - SEE SHEET 42 OF 63

DWG. NO. 90-C-11  
DWG. FILE NO. HA-1457  
PRINT FILE NO. N-8141

(SHEET 35 OF 63)