

STATE OF VIRGINIA COUNTY OF YORK
IN THE CLERK'S OFFICE OF THE CIRCUIT COURT FOR THE
COUNTY OF YORK, THE _____ DAY OF _____, 1989, THIS
PLAT WAS PRESENTED AND ADMITTED TO RECORD AS THE LAW DIRECTS
IN PLAT BOOK _____ PAGE _____

Filed in the Clerk's Office, Circuit Court, York Co., Va.
the 2nd day of June, 1989. SEE SHEET 1 FOR NOTES

Teste: Nancy B. Kane, Clerk
Carol P. Rosselund D.C.

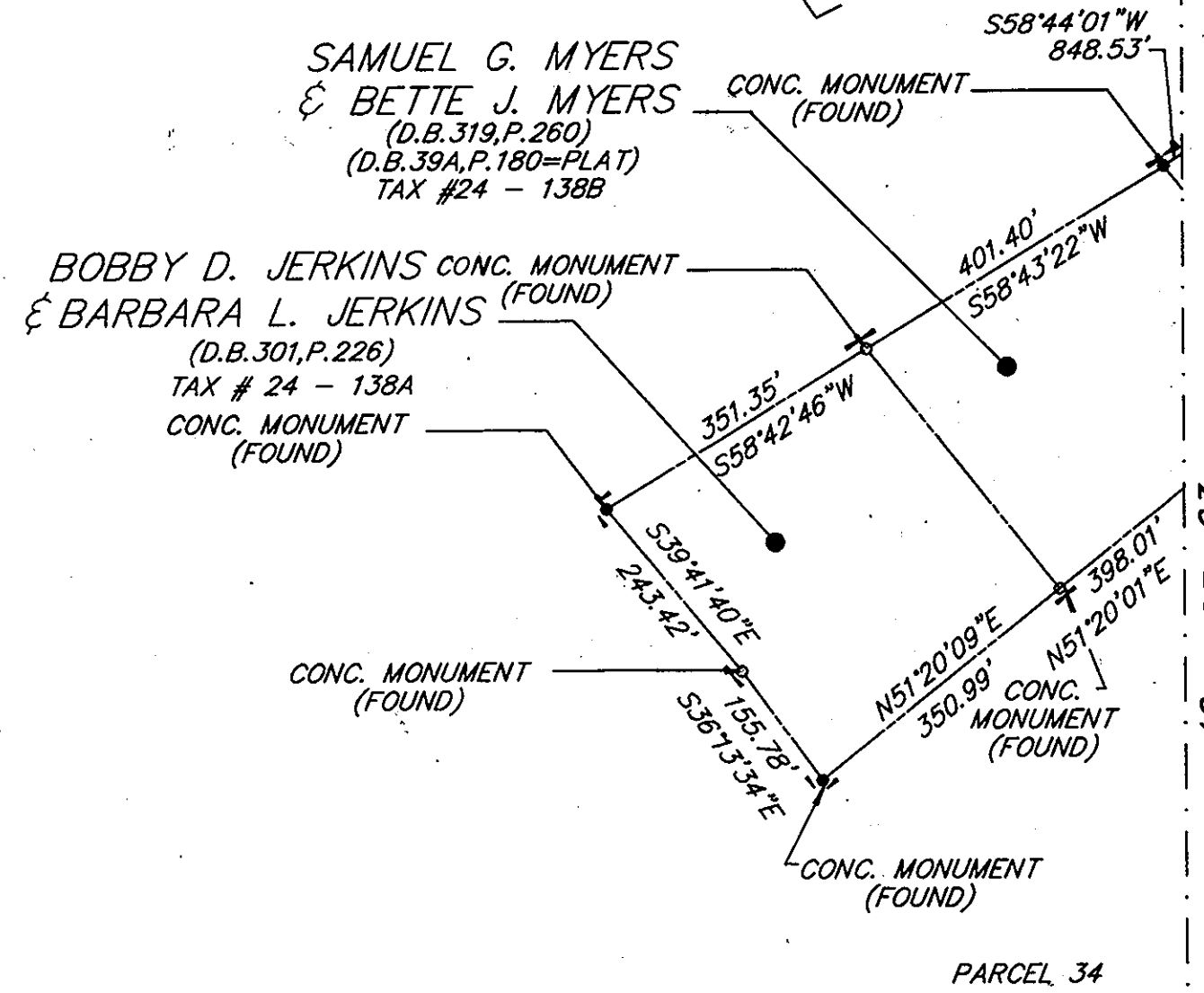
Plat Book No. 11 Page 466

VIRGINIA:
IN THE CLERK'S OFFICE OF THE CITY OF NEWPORT NEWS,
THE _____ DAY OF _____, 1989, THIS PLAT WAS PRESENTED
AND ADMITTED TO RECORD AS THE LAW DIRECTS IN PLAT BOOK _____
AT PAGE _____

TESTE: _____ CLERK
BY: _____ D.C.

MATCH LINE - SEE SHEET 32 OF 63

TESTE: _____ CLERK



CITY OF NEWPORT NEWS
(D.B. 51, P. 2) NEWPORT NEWS
TAX # 23 - 14
PARCEL 33

CONC. MONUMENT (FOUND)
CONC. MONUMENT (FOUND)
CONC. MONUMENT (FOUND)
CONC. MONUMENT (FOUND)
CONC. MONUMENT (FOUND)
CONC. MONUMENT (FOUND)
CONC. MONUMENT (FOUND)
CONC. MONUMENT (FOUND)

CONC. MONUMENT (FOUND)
MYRTLE AMORY GREEN
(D.B. 421, P. 218)
(D.B. 421, P. 220=PLAT)
TAX # 24 - 148

CITY OF NEWPORT NEWS
(D.B. 52, P. 1) NEWPORT NEWS
TAX # 23 - 14
PARCEL 38

CONC. MONUMENT (FOUND)
DWG. NO. 90-C-11
DWG. FILE NO. HA-1457
PRINT FILE NO. N-8141

MATCH LINE - SEE SHEET 38 OF 63

MATCH LINE - SEE SHEET 40 OF 63

MATCH LINE - SEE SHEET 46 OF 63

MATCH LINE - SEE SHEET 45 OF 63

(SHEET 39 OF 63)

