

STATE OF VIRGINIA COUNTY OF YORK
 IN THE CLERK'S OFFICE OF THE CIRCUIT COURT FOR THE
 COUNTY OF YORK, THE _____ DAY OF _____, 1989, THIS
 PLAT WAS PRESENTED AND ADMITTED TO RECORD AS THE LAW DIRECTS
 IN PLAT BOOK _____ PAGE _____

Filed in the Clerk's Office, Circuit Court, York Co., Va.
 the 2nd day of June 1989 SEE SHEET 1 FOR NOTES

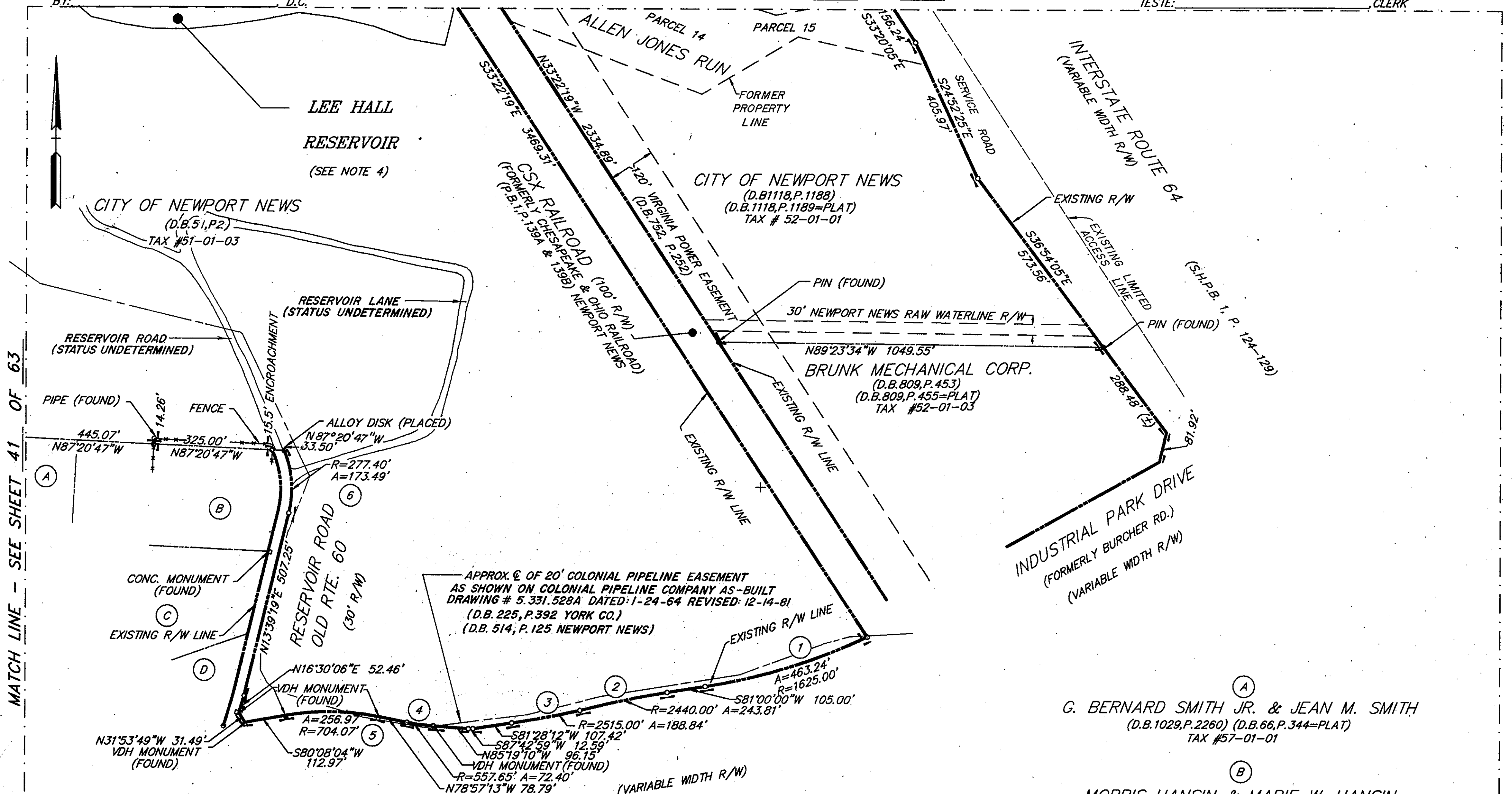
Teste:
 Nancy B. Kane, Clerk
 Carol Brossman, D.C.

Plat Book No. 11 Page 469

VIRGINIA:
 IN THE CLERK'S OFFICE OF THE CITY OF NEWPORT NEWS,
 THE _____ DAY OF _____, 1989, THIS PLAT WAS PRESENTED
 AND ADMITTED TO RECORD AS THE LAW DIRECTS IN PLAT BOOK _____
 AT PAGE _____

TESTE: _____ CLERK
 BY: _____ D.C.

TESTE: _____ CLERK



MATCH LINE - SEE SHEET 41 OF 63

MATCH LINE - SEE SHEET 35 OF 63

SCALE: 1"=200' APRIL 6, 1989

0 100 200 300 400 600 800 FEET

GRAPHIC SCALE

COMMONWEALTH OF VIRGINIA

Raymond R. Whitehurst, Jr.

No. 1611

12.8.89

LAND SURVEYOR

CURVE TABLE						
NO.	DELTA	RADIUS	ARC	TANGENT	CHORD	CH. BEARING
1	16°20'00"	1625.00'	463.24'	233.20'	461.67'	S 72°50'00" W
2	05°43'30"	2440.00'	243.81'	122.01'	243.71'	S 78°08'15" W
3	04°18'07"	2515.00'	188.84'	94.46'	188.79'	S 79°19'08" W
4	07°26'21"	557.65'	72.40'	36.25'	72.35'	N 82°40'23" W
5	20°54'43"	704.07'	256.97'	129.93'	255.55'	N 89°24'34" W
6	35°50'03"	277.40'	173.49'	89.69'	170.68'	N 04°15'43" W

- (A) G. BERNARD SMITH JR. & JEAN M. SMITH
 (D.B.1029,P.2260) (D.B.66,P.344=PLAT)
 TAX #57-01-01
- (B) MORRIS HANSIN & MARIE W. HANSIN
 (D.B.1126,P.1871) (D.B.66,P.344=PLAT)
 TAX #57-01-02
- (C) G. BERNARD SMITH, JR., ET AL
 (D.B.1022,P.33)
 (D.B.720,P.303=PLAT)
 TAX #57-01-04
- (D) HOWARD B. HANKINS ET AL
 (D.B.1177,P.750)
 (D.B.720,P.303=PLAT)
 TAX #57-01-05

DWG. NO. 90-C-11
 DWG. FILE NO. HA-1457
 PRINT FILE NO. N-8141